

# SUITE 210

2,433 SF

**AVAILABLE** Q2 2026

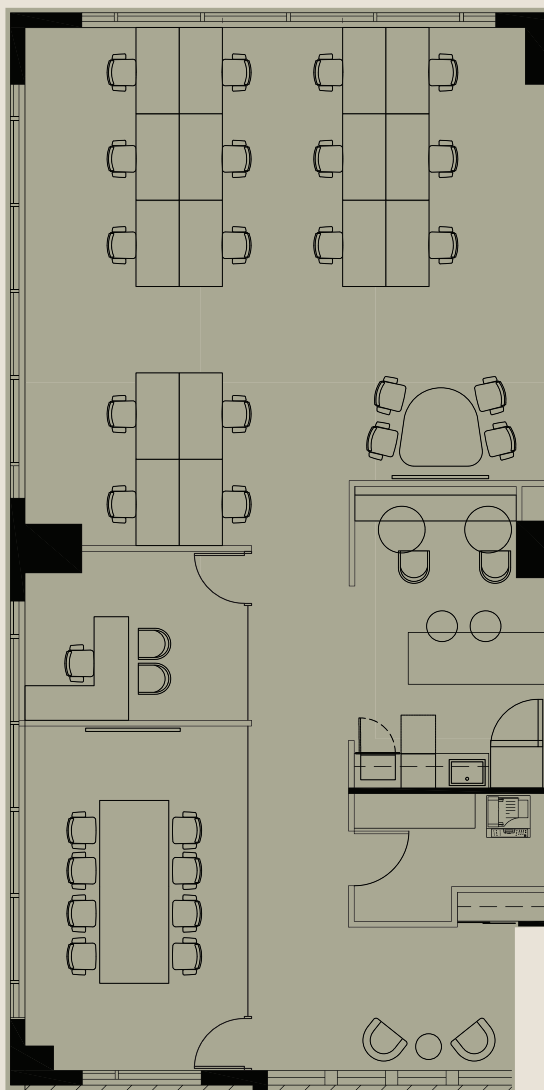
Furnished model suite under construction

**COMMENTS** Glass doorway entrance

Views overlooking Toronto Street

**ADD. RENT** \$29.24 PSF (2026 EST.)

MODEL SUITE



VIEW SAMPLE IMAGES



ONE  
TORONTO

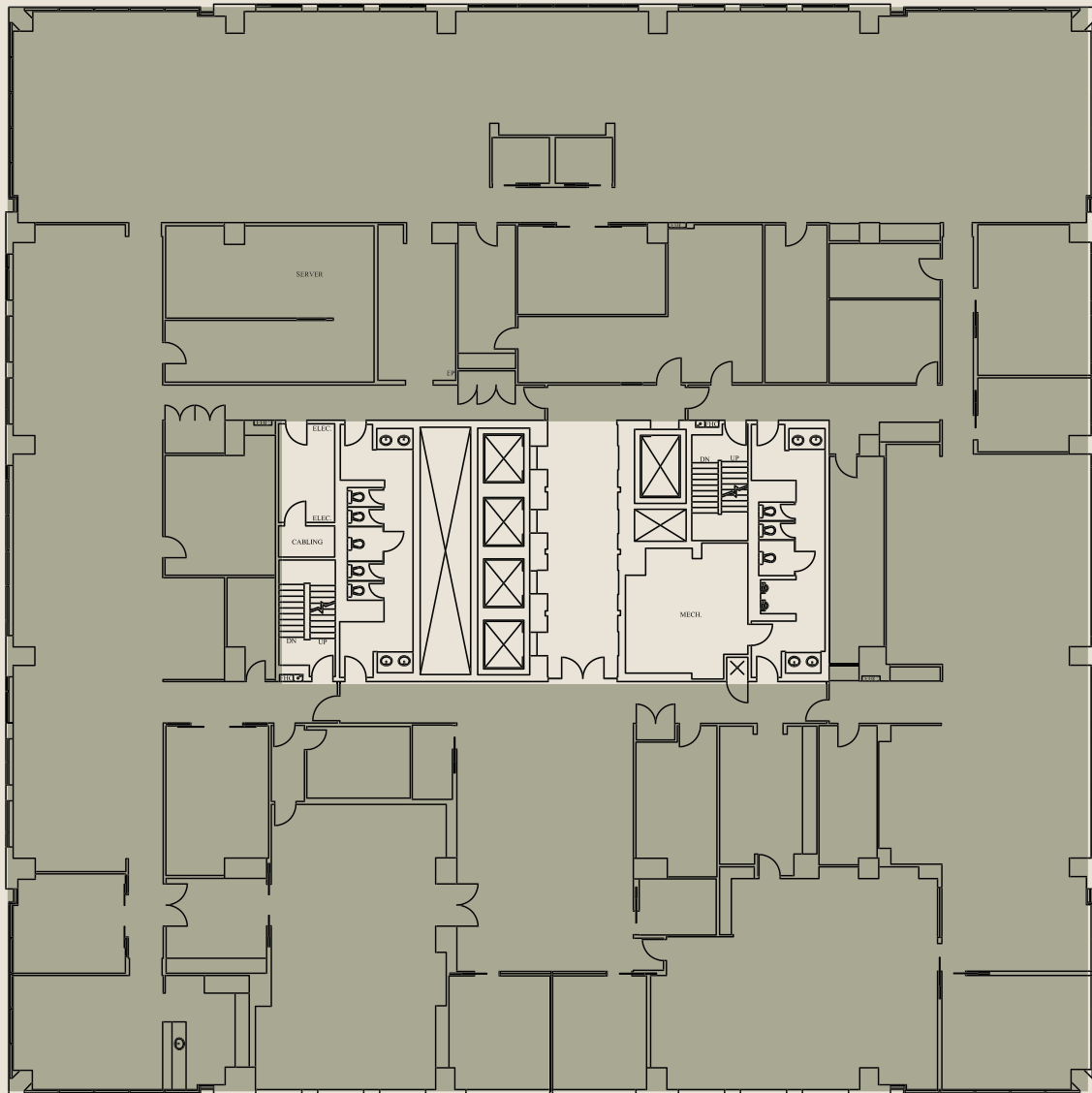
# SUITE 600

24,148 SF

**AVAILABLE** 03/01/2026

**COMMENTS** Full floor, built out with existing improvements

**ADD. RENT** \$29.24 PSF (2026 EST.)



# SUITE 700

14,826 SF

**AVAILABLE** 07/01/2026

**COMMENTS**

Quality existing leasehold improvements, furniture potentially available, elevator exposure

66 workstations, 9 meeting rooms, 5 offices, collaboration and soft seating areas, kitchen/cafeteria and reception

**ADD. RENT** \$29.24 PSF (2026 Est.)



[FURNITURE POTENTIALLY AVAILABLE](#)

[TAKE VIRTUAL TOUR](#)

[VIEW SUITE IMAGES](#)

\*Modern, open-concept build with an open ceiling



**ONE**  
TORONTO

# SUITE 907

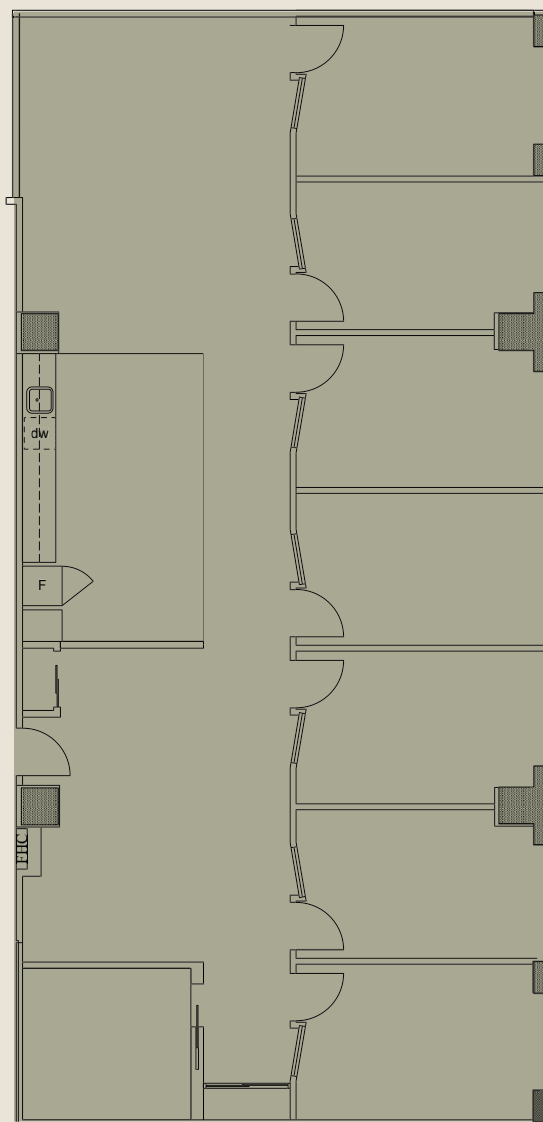
2,853 SF

**AVAILABLE** Available Immediately

**COMMENTS** Improved unit with new paint, carpet and kitchenette

**ADD. RENT** \$29.24 PSF (2026 Est.)

MODEL SUITE



VIEW SUITE IMAGES



**ONE**  
TORONTO

# SUITE 1300

24,496 SF

**AVAILABLE** Available Immediately

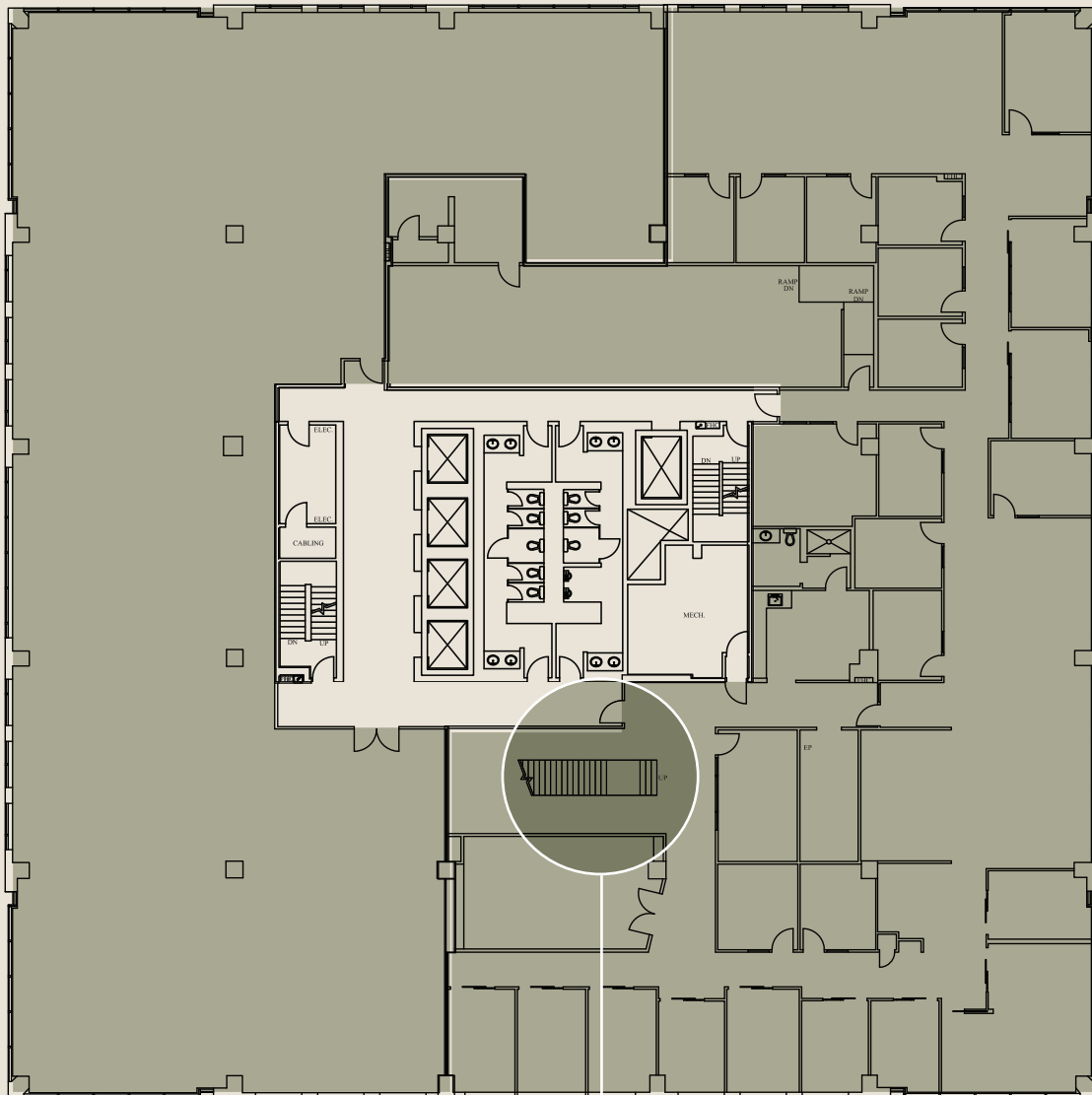
**COMMENTS**

Floor being brought back to base building condition by April 2026

Connected via internal stairwell to floors 14 & 15

**ADD. RENT**

\$29.24 PSF (2026 Est.)



STAIRCASE  
CONNECTED  
TO 1400 & 1500



ONE  
TORONTO

# SUITE 1400

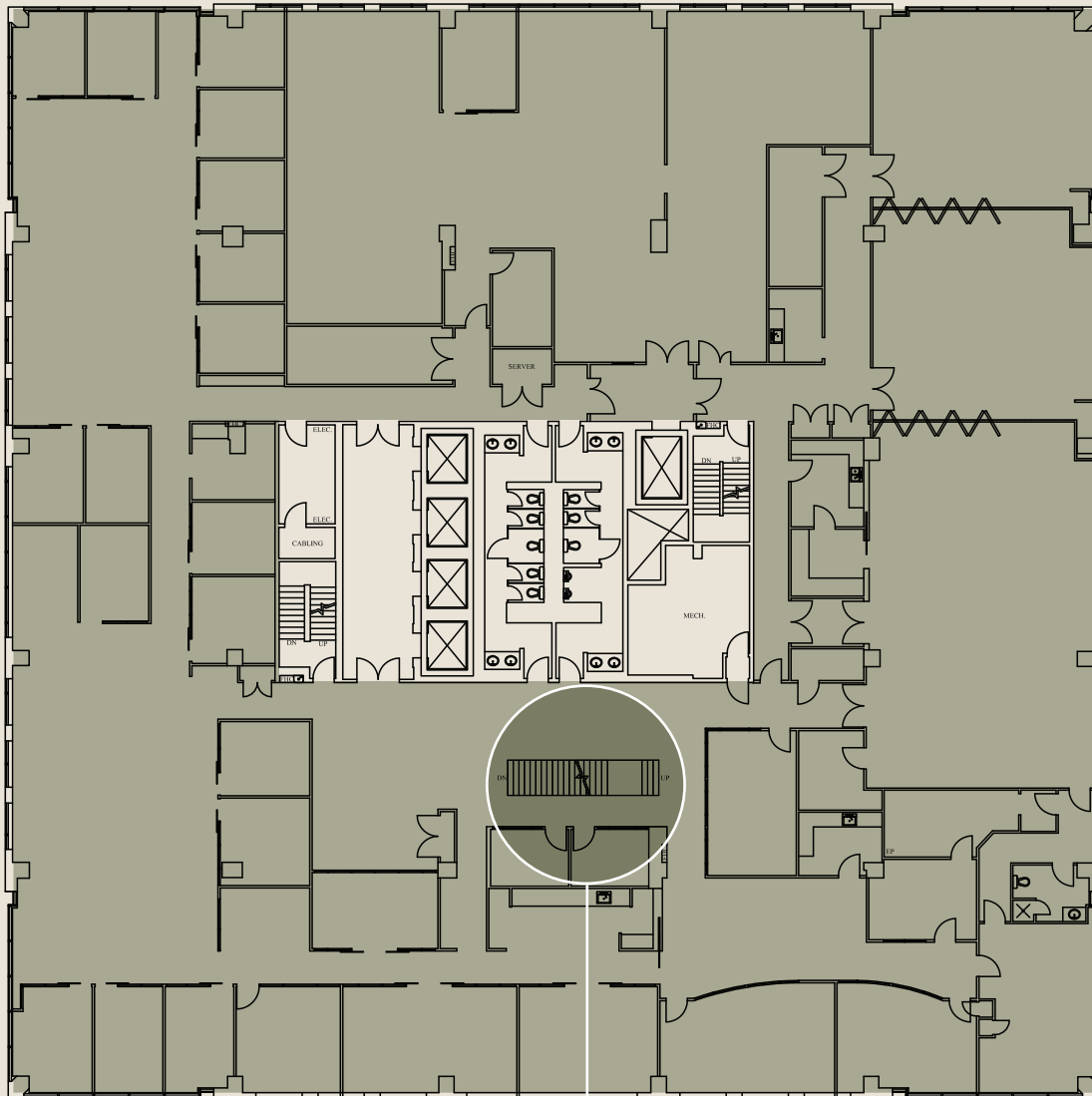
24,491 SF

**AVAILABLE** Available Immediately

**COMMENTS**

Floor being brought back to base building condition by April 2026  
Connected via internal stairwell to floors 13 & 15

**ADD. RENT** \$29.24 PSF (2026 Est.)



STAIRCASE  
CONNECTED  
TO 1300 & 1500



**ONE**  
TORONTO

# SUITE 1500

23,104 SF

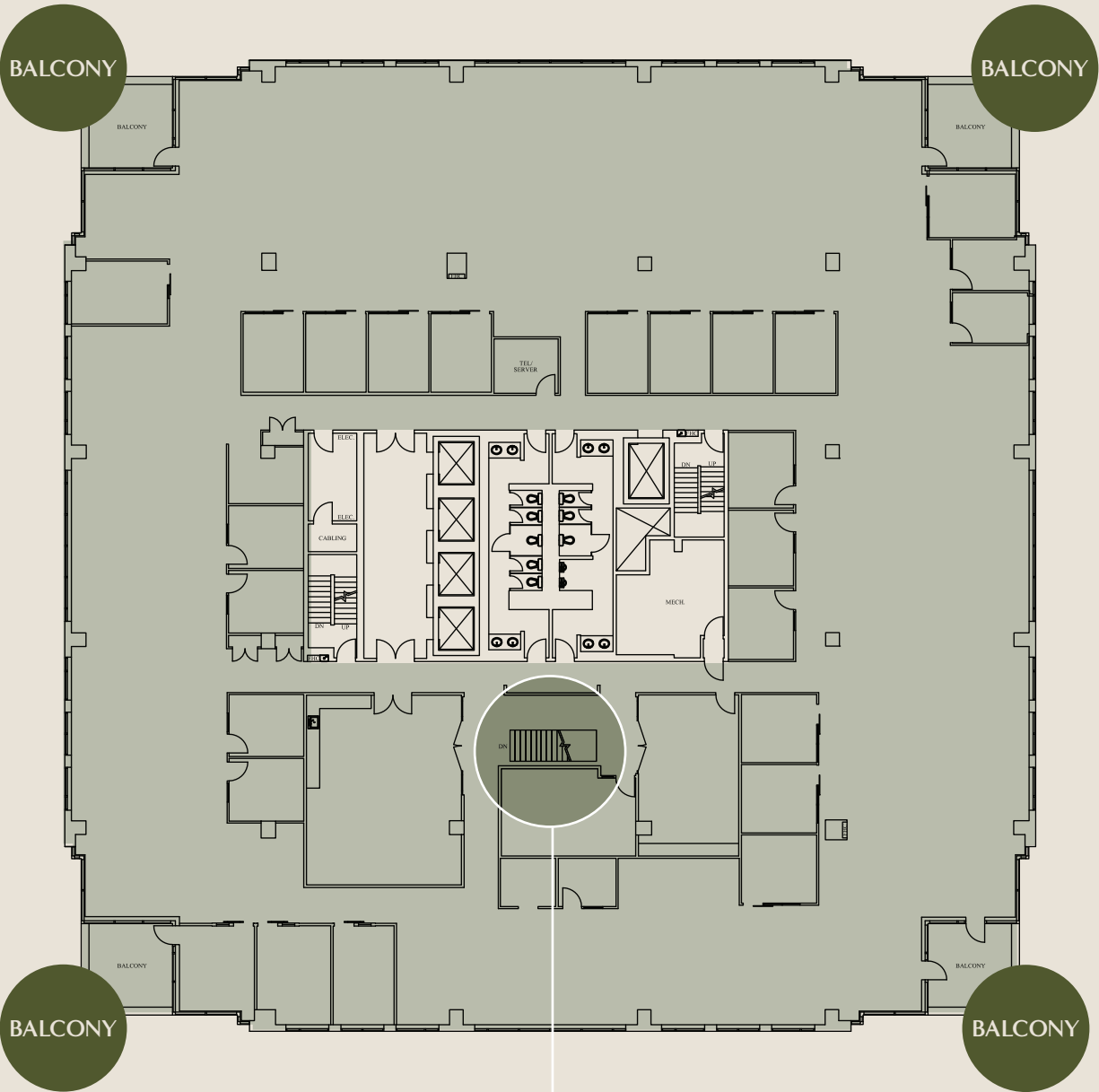
**AVAILABLE** Available Immediately

**COMMENTS**

Floor being brought back to base building condition by April 2026

Connected via internal stairwell to floors 13 & 14

**ADD. RENT** \$29.24 PSF (2026 Est.)



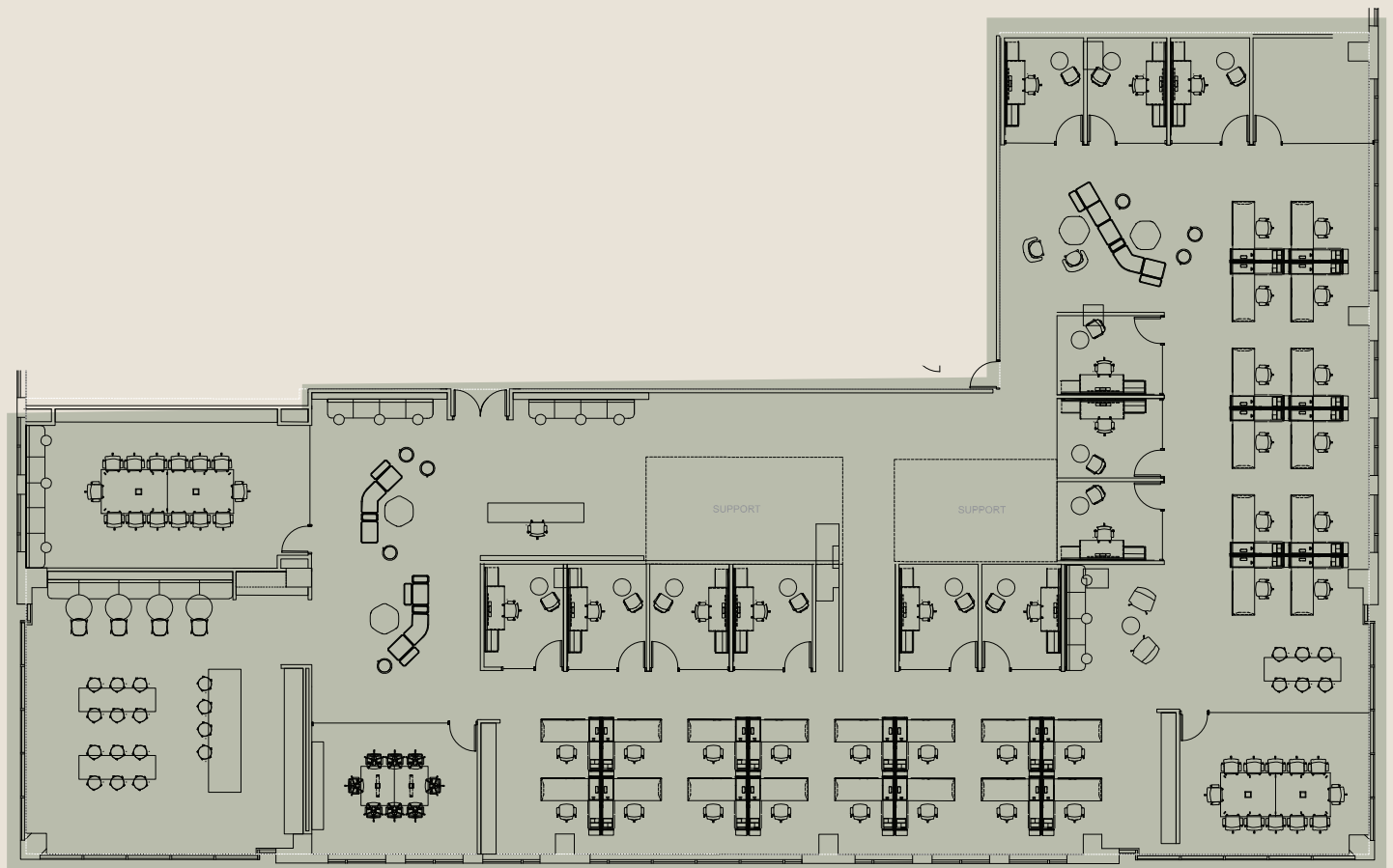
STAIRCASE  
CONNECTED  
TO 1300 & 1400



ONE  
TORONTO

# SAMPLE HALF

FLOOR SPACE PLAN



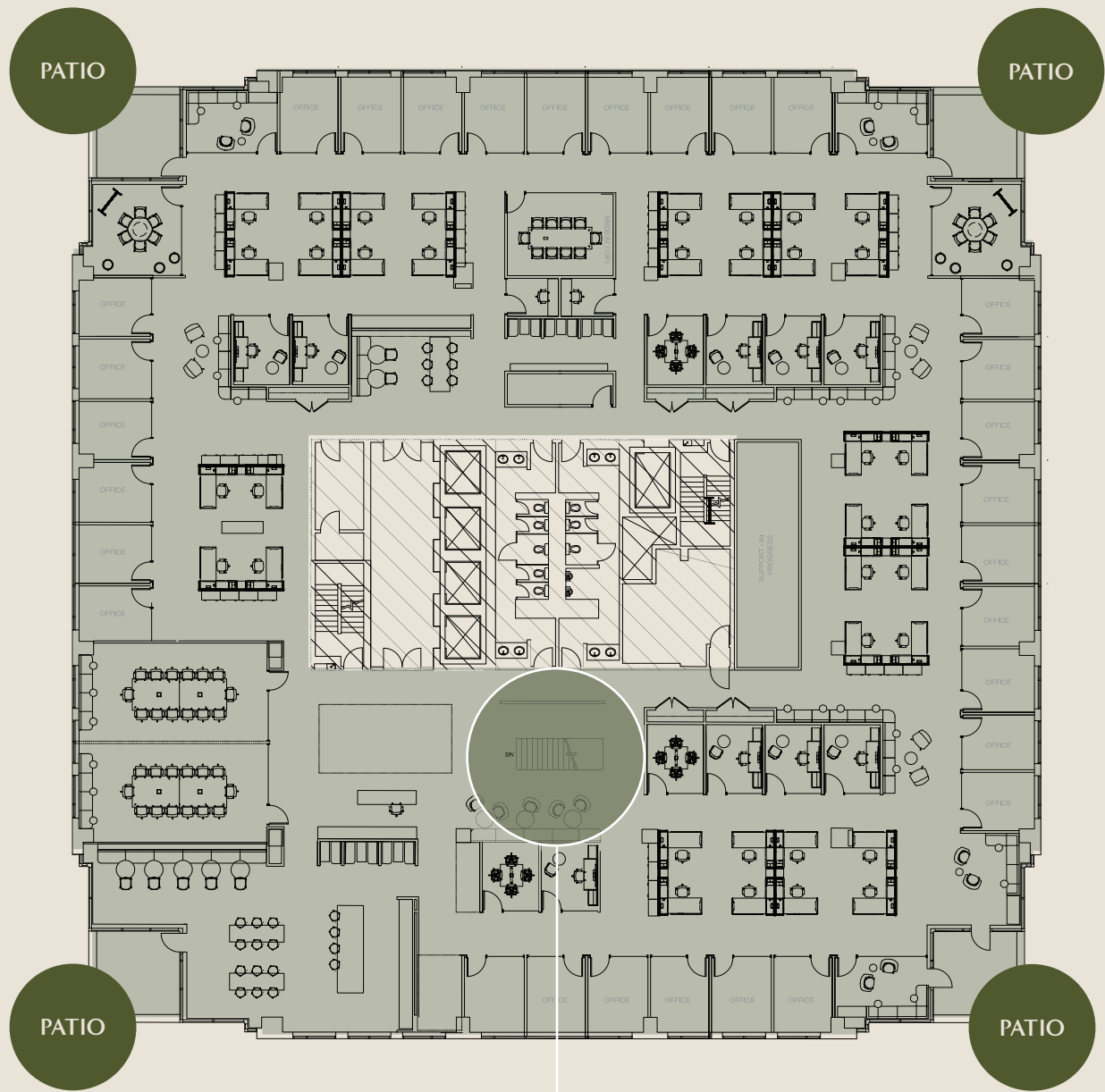
ONE  
TORONTO

# SUITE 1500

23,104 SF

\*Use of patio space needs to be approved by code consultants and the City of Toronto

SAMPLE SPACE PLAN | TRADITIONAL



STAIRCASE  
CONNECTED  
TO 1300 & 1400



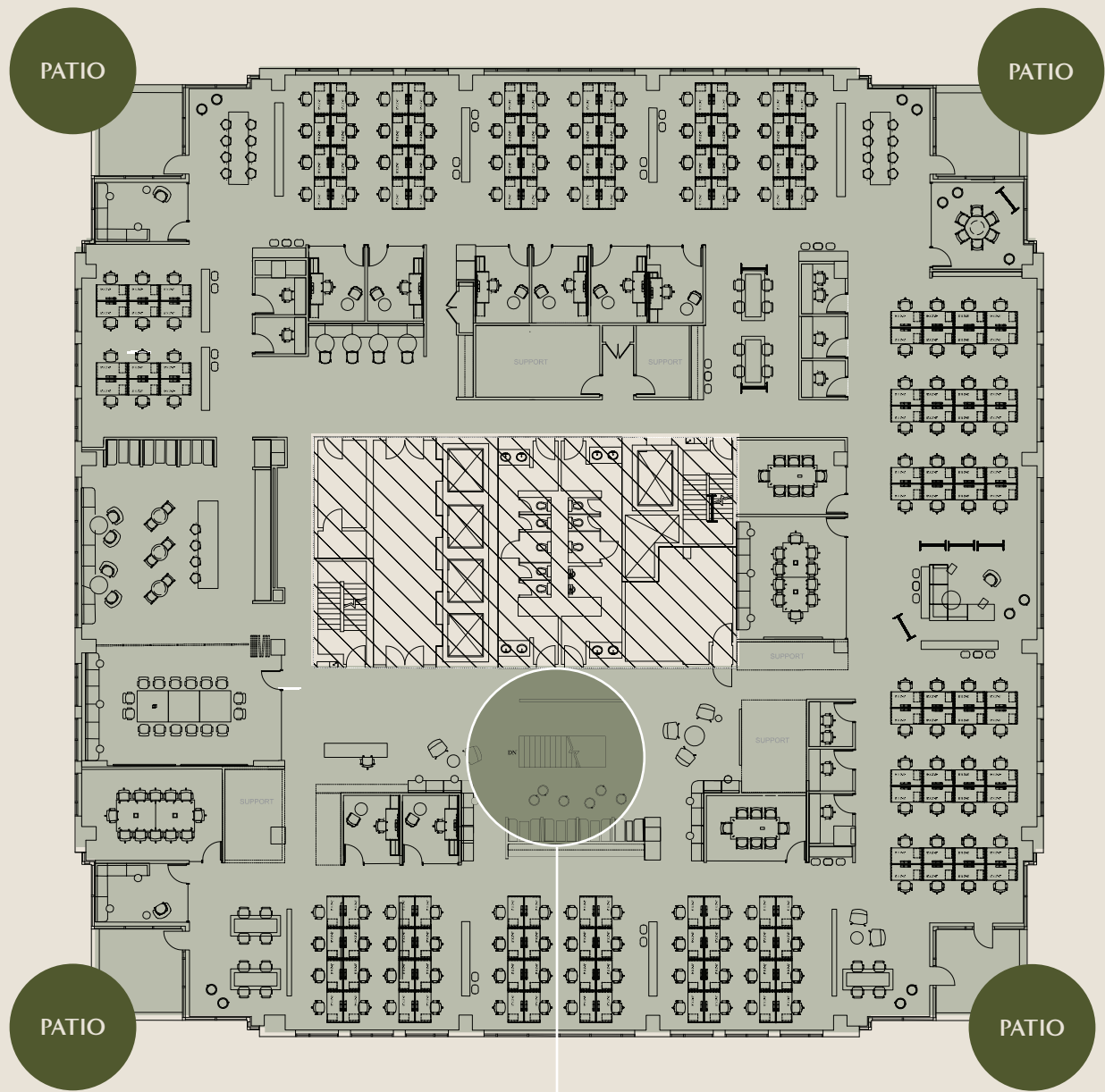
ONE  
TORONTO

# SUITE 1500

23,104 SF

\*Use of patio space needs to be approved by code consultants and the City of Toronto

SAMPLE SPACE PLAN | CREATIVE



STAIRCASE  
CONNECTED  
TO 1300 & 1400



ONE  
TORONTO