

FOR SALE

PRENTISS LAND
LACOMBE COUNTY, AB

Red Deer

Blackfalds

Range Road 261

CN Rail

Township Road 394



SALOMONS
COMMERCIAL

Kelly Babcock
Partner/Broker
403.314.6188
kelly@salomonscommercial.com

#103, 4315 - 55 Avenue
Red Deer, AB T4N 4N7
www.salomonscommercial.com



About the Property

This 30.69-acre parcel, located at the intersection of Range Road 261 and Township Road 394 in Lacombe County, offers significant potential for industrial development. While currently zoned for agriculture, there is potential to rezone the property to industrial, expanding its range of uses.

Ideally positioned, the land is 11 km from Blackfalds, 15 km from Lacombe, and 28 km from Red Deer, with easy access to major transportation routes, including QEII, Highway 2A, and secondary highways.

A key feature is the CN Rail line that runs through the property, with a spur line and switches at both ends, offering the potential for future expansion. Utilities such as gas and power are at the property line, with upgraded power available just ½ mile away. Proximity to industrial hubs, including the MEGlobal and Nova Chemicals plants, enhances this land's appeal for a variety of industrial uses.

LEGAL DESCRIPTION

Plan 0023356, Block 1, Lot 1

PARCEL SIZE

30.69 Acres

LOCATION

Lacombe County

ZONING

Agriculture (*potential to rezone to Industrial*)

SALE PRICE

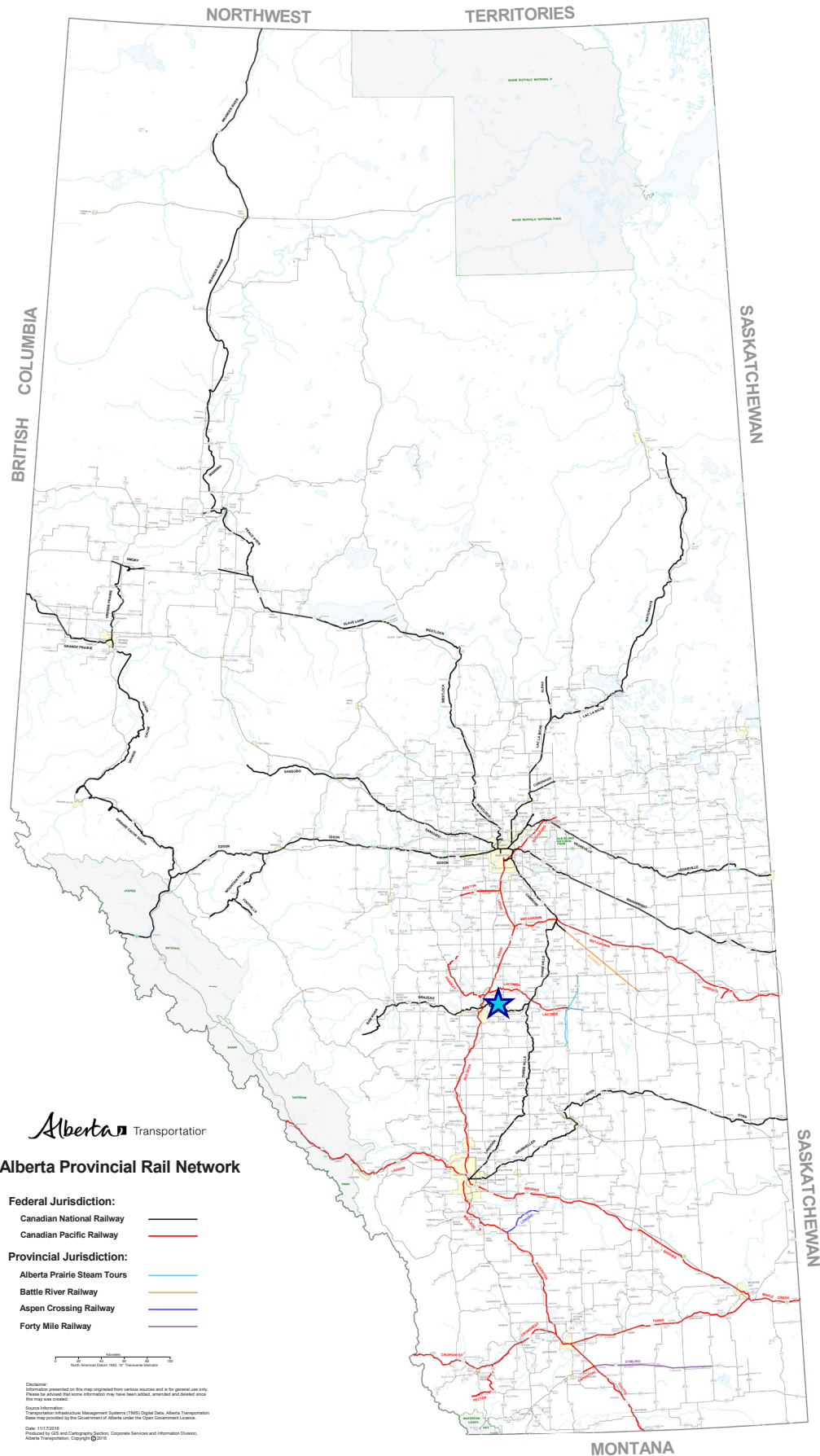
\$1,200,000

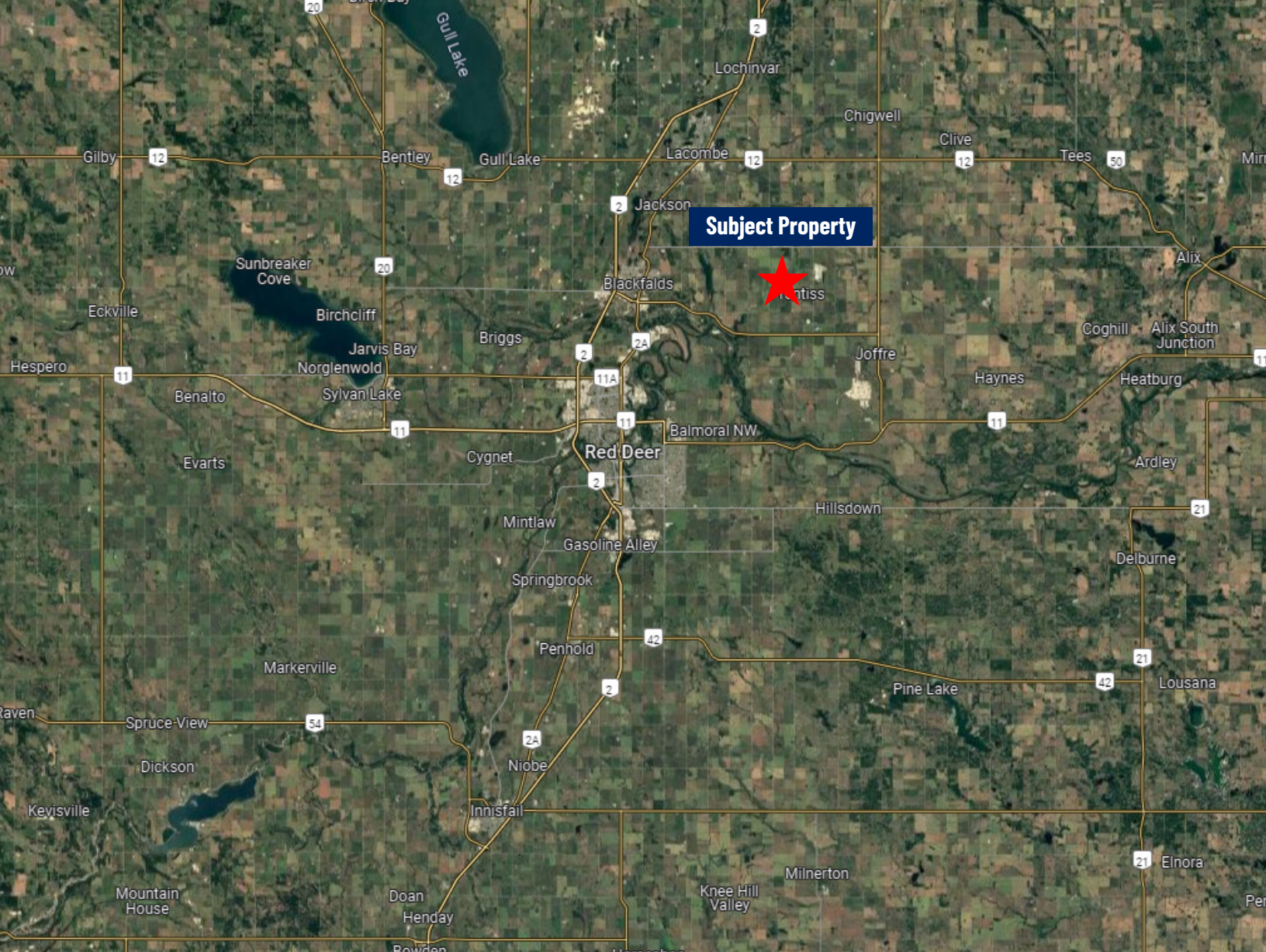
PROPERTY TAXES

\$27.00 (2024)

POSSESSION

Immediate





Central Alberta's Ambassador for Commercial Real Estate



#103, 4315 - 55 Avenue Red Deer, AB T4N 4N7
www.salomonscommercial.com

Kelly Babcock
 Listing Agent
 403.314.6188
kelly@salomonscommercial.com

Davin Kemshead
 Associate
 403.314.6190
davin@salomonscommercial.com

Brett Salomons
 Partner
 403.314.6187
brett@salomonscommercial.com

Max Field
 Associate
 403.314.6186
max@salomonscommercial.com

Mike Williamson
 Associate
 403.314.6189
mike@salomonscommercial.com

Jordan Krulicki
 Associate
 403.314.6185
jordan@salomonscommercial.com