



AVISON
YOUNG

543 Yonge Street

Suite 300 | 12,783 sf

Education Space for Lease Assignment and Sublease

Avison Young | 222 Bay Street, Suite 2500, Box 245, Toronto, ON M5K 1J5 | +1 416 955 0000 © 2025 Avison Young Real Estate Commercial Services, LP. Brokerage. All rights reserved. E. & O.E.: The information contained herein was obtained from sources which we deem reliable and, while thought to be correct, is not guaranteed by Avison Young

Get more information

Matthew Olejnik*
Principal, Senior Vice President
416 673 4038
matt.olejnik@avisonyoung.com

*Sales Representative

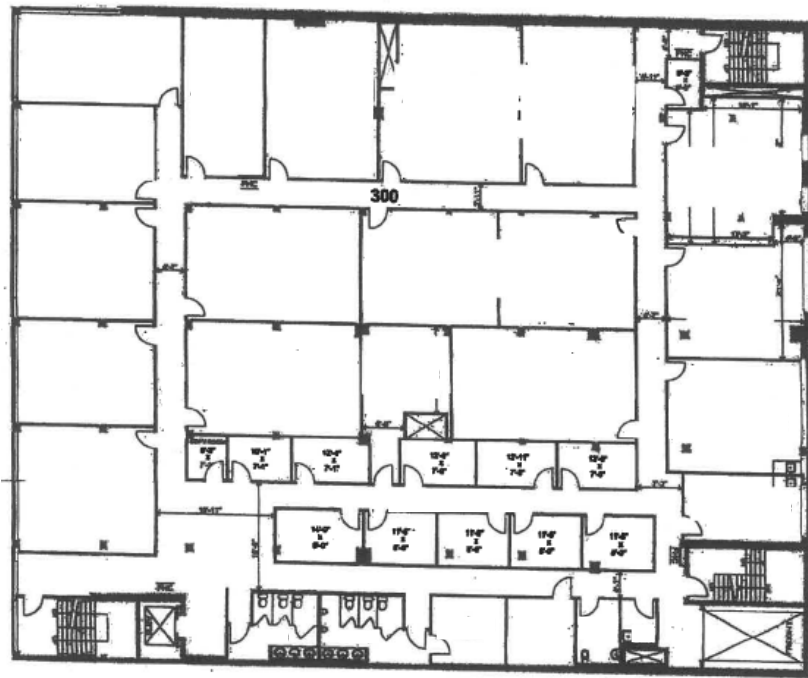
Hannah Belter*
Associate
647 252 4091
hannah.belter@avisonyoung.com

Details

Availability	Suite 300: 12,783 sf
Net Rent	Contact Listing Agent
Additional Rent	\$19.78 psf (2025 est.)
Term	August 30, 2028
Occupancy	30 Days notice

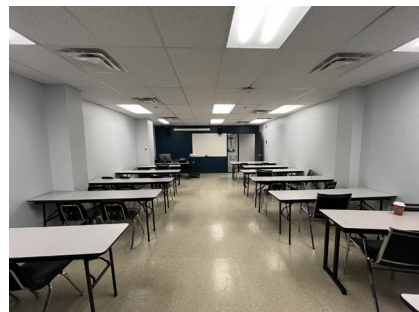
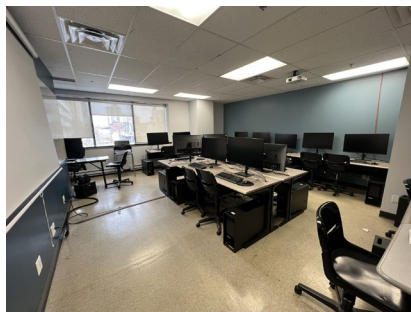
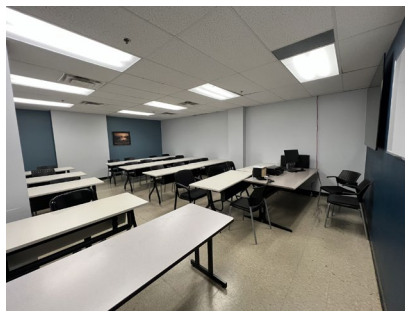
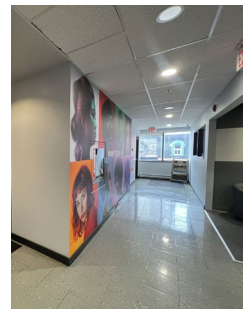
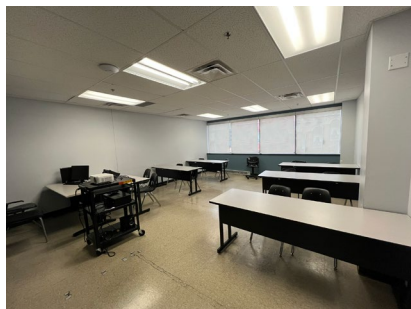
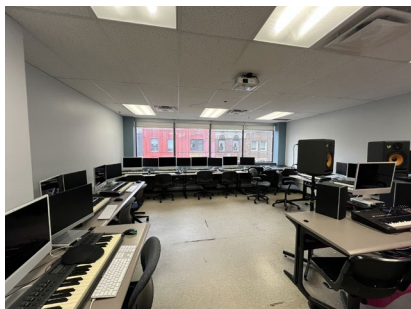
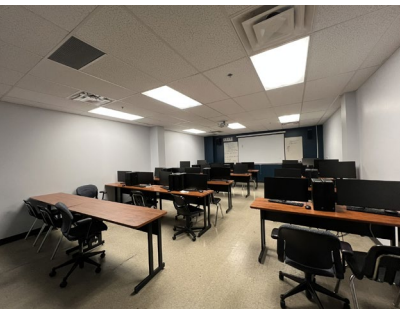
Highlights

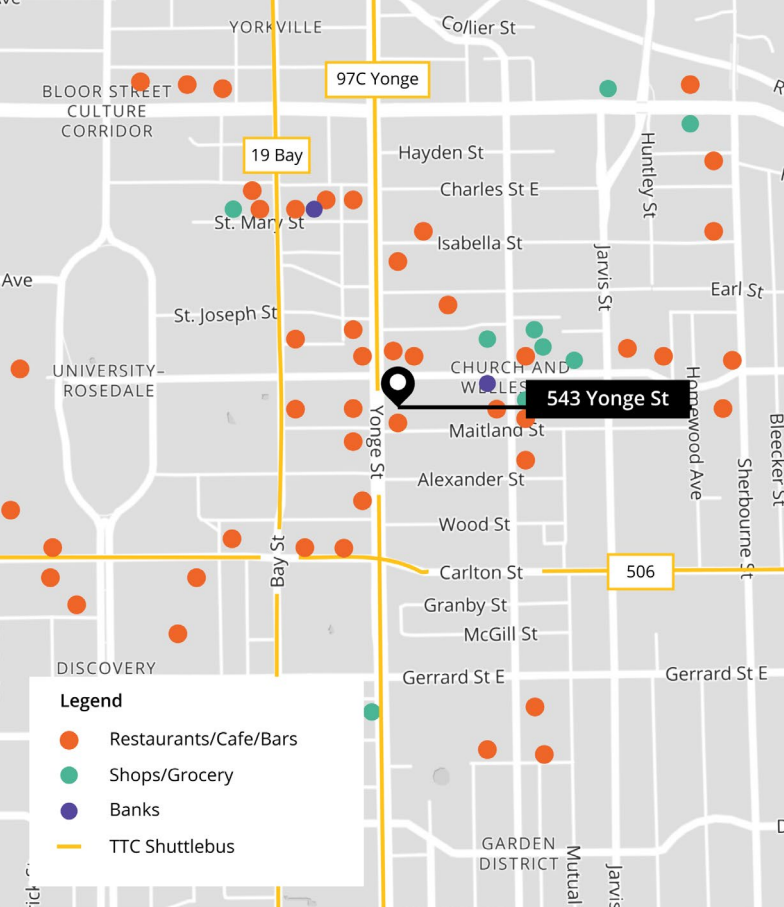
- Fully built out education and classroom space
- Furniture available
- 1-Minute walk to Wellesley Subway Station



For Lease Assignment and Sublease

543 Yonge Street





Transit & Amenities



**1-minute
walk**
to Wellesley Station



**9-minute
commute**
to Union Station

100
WalkScore

96
BikeScore

95
TransitScore

Get more information

Matthew Olejnik*
Principal, Senior Vice President
416 673 4038
matt.olejnik@avisonyoung.com

Hannah Belter*
Associate
647 252 4091
hannah.belter@avisonyoung.com

*Sales Representative

**AVISON
YOUNG**

**BEST
MANAGED
COMPANIES**

Platinum
member