

12339 Steveston Hwy

Richmond, BC

35,113 SF - Retail, Recreation, Education Space



Contact

Maureen Mounzer

Personal Real Estate Corporation
Associate Vice President
Commercial Sales & Leasing
+1 604 669 1466

maureen.mounzer@cbre.com

www.cbre.ca/properties

Experience the convenience of prime retail space at 12339 Steveston Hwy, Richmond, BC.

This location is perfect for businesses seeking high foot traffic and outstanding accessibility

Prime Mixed-Use Retail

12339 Steveston Highway | Richmond

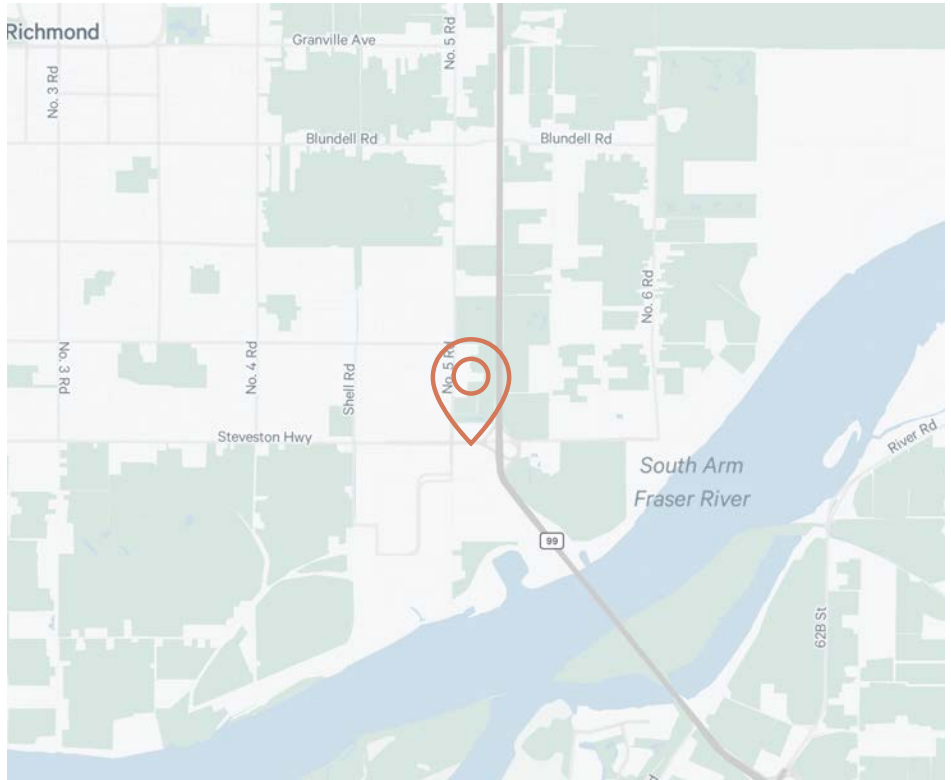


The Location

Formerly a Loblaws location, this spot boasts a high-visibility location along the bustling Steveston Hwy. Take advantage of ample underground parking with direct access to the retail store and additional street parking options, making it easy for your customers to shop. Discover the potential of 12339 Steveston Hwy, where business meets opportunity.

Details

Size	35,113 SF
Net Rent	Contact Agent
Additional Rent	\$6.37 PSF (2024 est.)
Available	On Notice
Zoning	ZMU18
Parking 3.5/1,000 SF	293 Underground and 87 Surface
Ceiling Height	15' 6" Clear
Expiry	October 30, 2029



Area Highlights

Experience the dynamic community of Richmond, BC, an ideal location to launch your business.

Situated in the heart of Metro Vancouver, Richmond offers unparalleled accessibility to major transportation networks. With a thriving multicultural community, a vibrant economy, and a supportive local government fostering entrepreneurial growth, Richmond, BC stands out as a prime destination for business expansion. Leverage this opportunity to tap into a diverse customer base and enjoy the benefits of operating in a region renowned for its business-friendly environment.



Contact

Maureen Mounzer

Personal Real Estate Corporation

Associate Vice President

Commercial Sales & Leasing

+1 604 669 1466

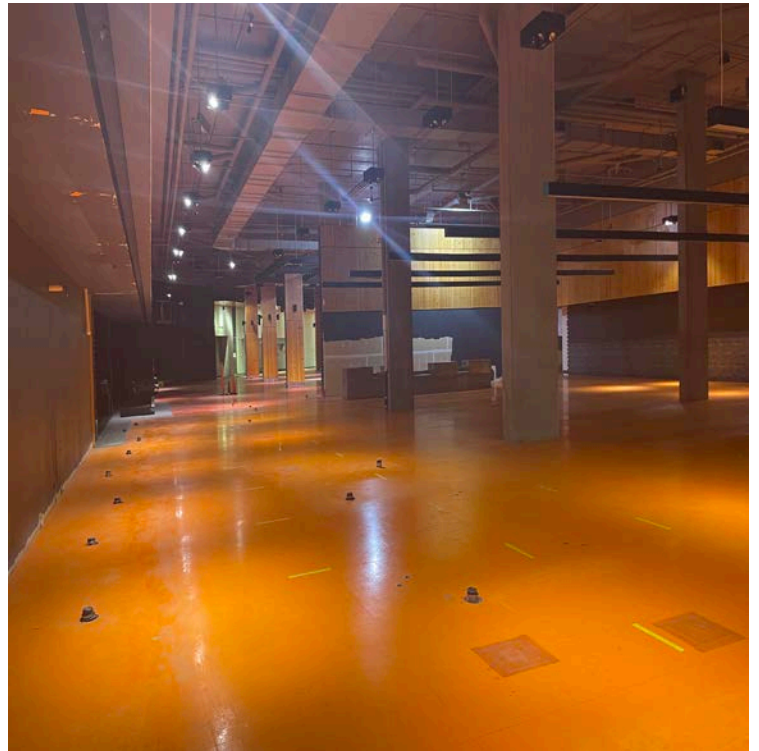
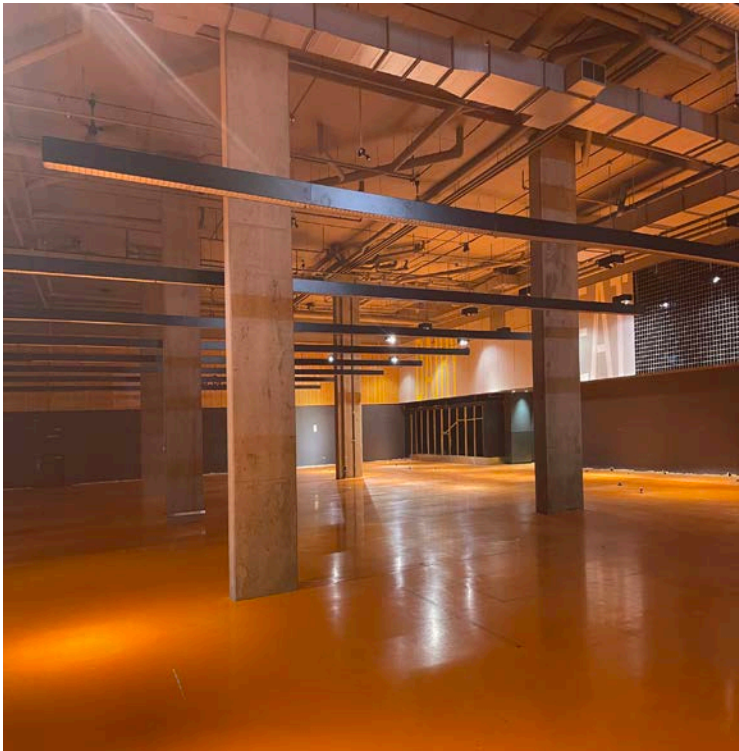
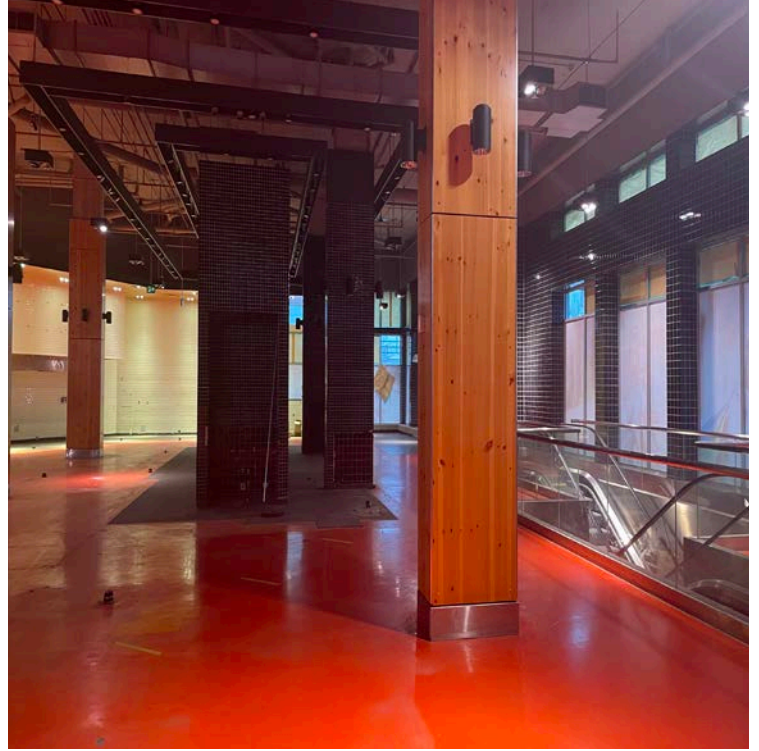
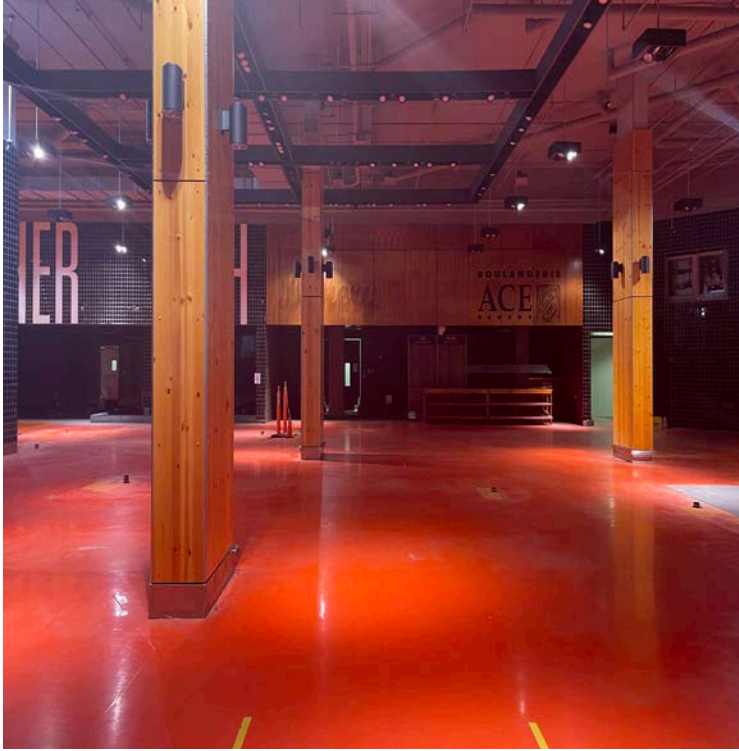
maureen.mounzer@cbre.com

This disclaimer shall apply to CBRE Limited, Real Estate Brokerage, and to all other divisions of the Corporation; to include all employees and independent contractors ("CBRE"). The information set out herein, including, without limitation, any projections, images, opinions, assumptions and estimates obtained from third parties (the "Information") has not been verified by CBRE, and CBRE does not represent, warrant or guarantee the accuracy, correctness and completeness of the Information. CBRE does not accept or assume any responsibility or liability, direct or consequential, for the Information or the recipient's reliance upon the Information. The recipient of the Information should take such steps as the recipient may deem necessary to verify the Information prior to placing any reliance upon the Information. The Information may change and any property described in the Information may be withdrawn from the market at any time without notice or obligation to the recipient from CBRE. CBRE and the CBRE logo are the service marks of CBRE Limited and/or its affiliated or related companies in other countries. All other marks displayed on this document are the property of their respective owners. All Rights Reserved. Mapping Sources: Canadian Mapping Services canadamapping@cbre.com; DMTI Spatial, Environics Analytics, Microsoft Bing, Google Earth.

Prime Mixed-Use Retail

12339 Steveston Highway | Richmond

Interior Photos



Contact

Maureen Mounzer

Personal Real Estate Corporation

Associate Vice President

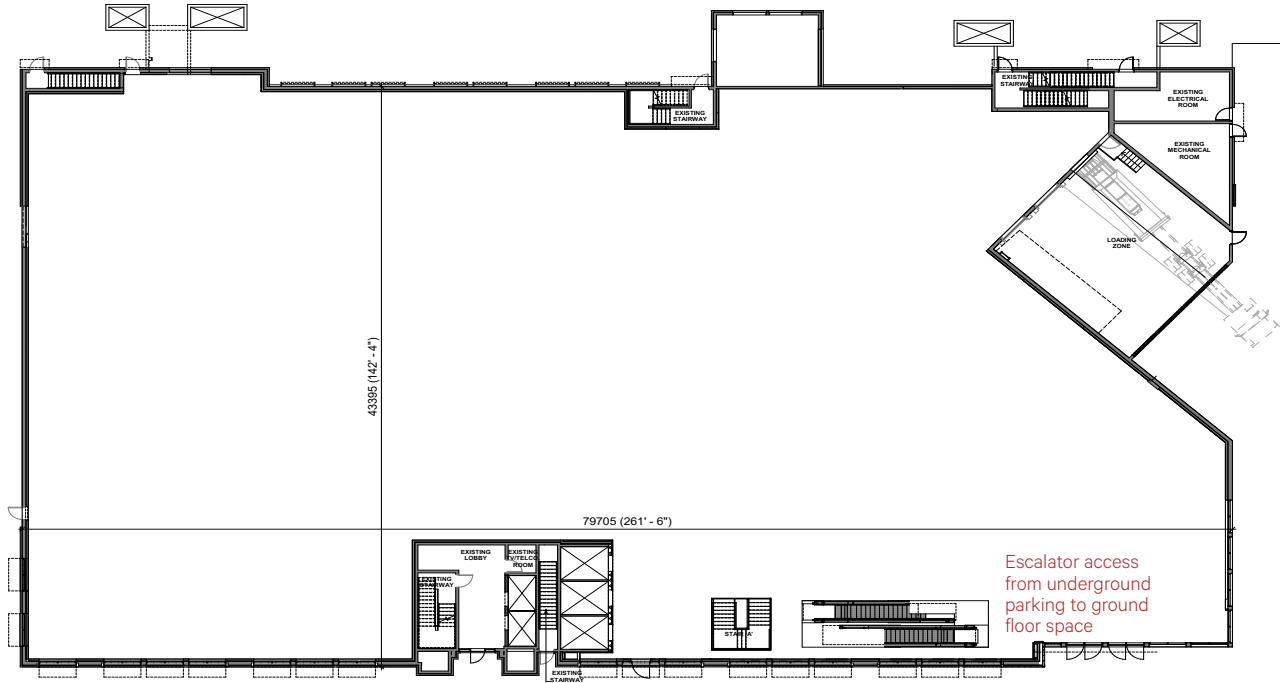
Commercial Sales & Leasing

+1 604 669 1466

maureen.mounzer@cbre.com

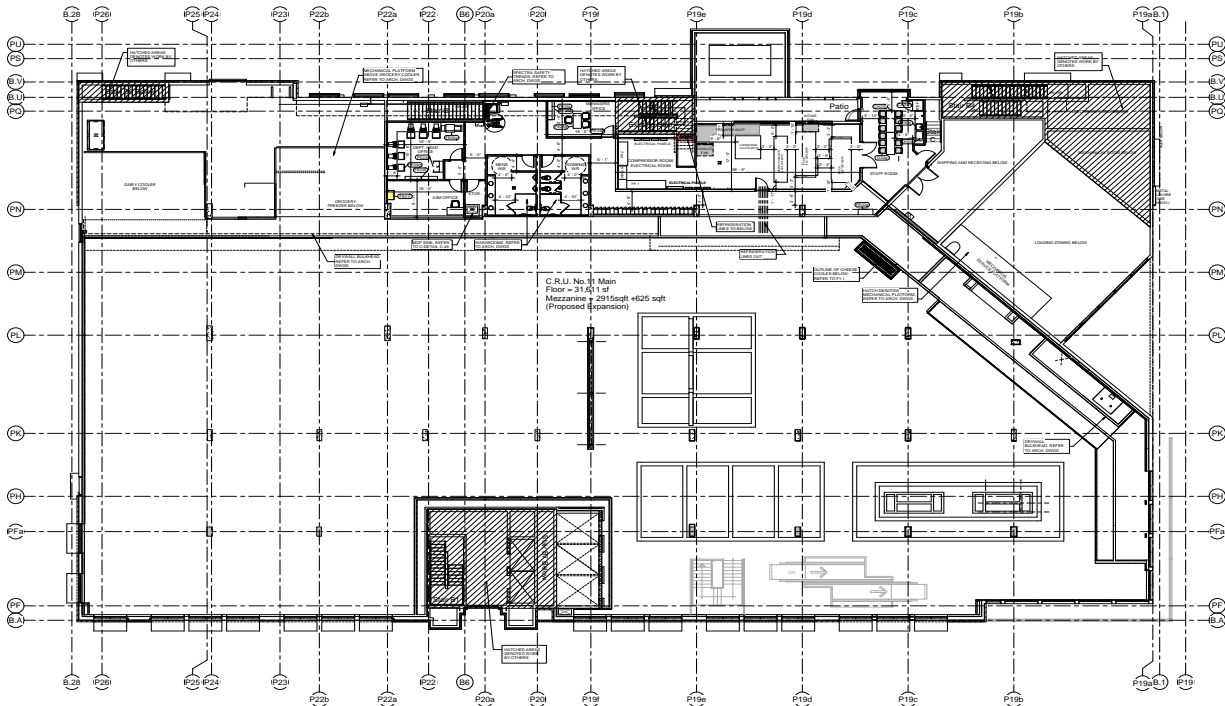
This disclaimer shall apply to CBRE Limited, Real Estate Brokerage, and to all other divisions of the Corporation; to include all employees and independent contractors ("CBRE"). The information set out herein, including, without limitation, any projections, images, opinions, assumptions and estimates obtained from third parties (the "Information") has not been verified by CBRE, and CBRE does not represent, warrant or guarantee the accuracy, correctness and completeness of the Information. CBRE does not accept or assume any responsibility or liability, direct or consequential, for the Information or the recipient's reliance upon the Information. The recipient of the Information should take such steps as the recipient may deem necessary to verify the Information prior to placing any reliance upon the Information. The Information may change and any property described in the Information may be withdrawn from the market at any time without notice or obligation to the recipient from CBRE. CBRE and the CBRE logo are the service marks of CBRE Limited and/or its affiliated or related companies in other countries. All other marks displayed on this document are the property of their respective owners. All Rights Reserved. Mapping Sources: Canadian Mapping Services canadamapping@cbre.com; DMTI Spatial, Environics Analytics, Microsoft Bing, Google Earth.

Ground Floor Plan



NOT TO SCALE

Mezzanine Floor Plan



Contact

Maureen Mounzer
Personal Real Estate Corporation
Associate Vice President
Commercial Sales & Leasing
+1 604 669 1466
maureen.mounzer@cbre.com

This disclaimer shall apply to CBRE Limited, Real Estate Brokerage, and to all other divisions of the Corporation; to include all employees and independent contractors ("CBRE"). The information set out herein, including, without limitation, any projections, images, opinions, assumptions and estimates obtained from third parties (the "Information") has not been verified by CBRE, and CBRE does not represent, warrant or guarantee the accuracy, correctness and completeness of the Information. CBRE does not accept or assume any responsibility or liability, direct or consequential, for the Information or the recipient's reliance upon the Information. The recipient of the Information should take such steps as the recipient may deem necessary to verify the Information prior to placing any reliance upon the Information. The Information may change and any property described in the Information may be withdrawn from the market at any time without notice or obligation to the recipient from CBRE. CBRE and the CBRE logo are the service marks of CBRE Limited and/or its affiliated or related companies in other countries. All other marks displayed on this document are the property of their respective owners. All Rights Reserved. Mapping Sources: Canadian Mapping Services canadamapping@cbre.com; DMTI Spatial, Environics Analytics, Microsoft Bing, Google Earth.