

FOR LEASE

Located at IntraUrban Business Park

UNIT 6 - 8855 LAUREL STREET

VANCOUVER, BC



CBRE

JORDAN COULTER

Associate Vice President, Industrial

604 662 5574

jordan.coulter@cbre.com

ED FERREIRA

Personal Real Estate Corporation

Senior Vice President, Industrial

604 662 5122 | ed.ferreira@cbre.com

DARREN STAREK

Senior Vice President, Industrial

604 662 5175

darren.starek@cbre.com

Unit 6 - 8855 Laurel Street



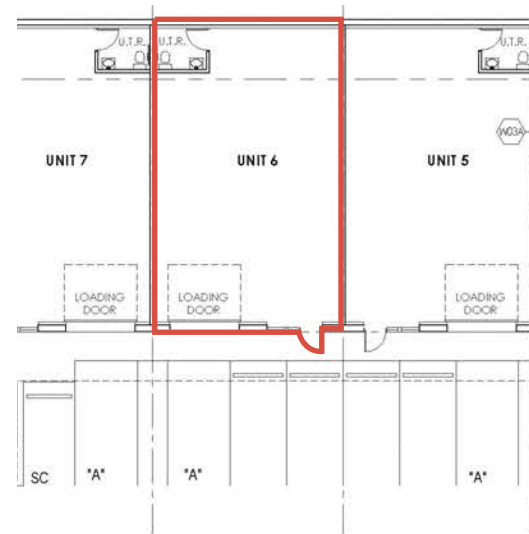
PROPERTY DETAILS

RENTABLE AREA	1,231 SF
LEASE RATE	\$24.50 PSF, triple net or \$2,513.29 per month
TAXES & OP. COSTS	\$11.00 PSF (2026 est.) or \$1,154.06 per month
ZONING	I-2

PROPERTY FEATURES

- || Ample natural lighting
- || ESFR sprinkler system
- || 12' clear ceiling height
- || Contemporary storefronts & generous glazing
- || Handicapped accessible washrooms
- || 2 parking stalls
- || 1 grade level loading door

FLOOR PLAN



*NOT TO SCALE

FOR LEASE

Located at IntraUrban Business Park

UNIT 6 - 8855 LAUREL STREET

VANCOUVER, BC



- 1 SAFEWAY
- 2 VPL MARPOLE
- 3 COAST HOTEL
- 4 WHITESPOT
- 5 SHOPPERS DRUG MART
- 6 STARBUCKS
- 7 PINK ELEPHANT THAI
- 8 DUBLIN CROSSING
- 9 TIM HORTON'S
- 10 T&T SUPERMARKET
- 11 CINEPLEX
- 12 STEVE NASH FITNESS
- 13 SPORTCHEK
- 14 BEST BUY
- 15 CANADIAN TIRE
- 16 REAL CANADIAN SUPERSTORE

**CONTACT
LISTING BROKERS**

JORDAN COULTER
Associate Vice President
Industrial Properties
604 662 5574
jordan.coulter@cbre.com

ED FERREIRA
Personal Real Estate Corporation
Senior Vice President
Industrial Properties
604 662 5122 | ed.ferreira@cbre.com

DARREN STAREK
Senior Vice President
Industrial Properties
604 662 5175
darren.starek@cbre.com

CBRE Limited | 1021 West Hastings St | Suite 2500 | Vancouver, BC V6E 0C3 | www.cbre.ca

This disclaimer shall apply to CBRE Limited, Real Estate Brokerage, and to all other divisions of the Corporation; to include all employees and independent contractors ("CBRE"). The information set out herein, including, without limitation, any projections, images, opinions, assumptions and estimates obtained from third parties (the "Information") has not been verified by CBRE, and CBRE does not represent, warrant or guarantee the accuracy, correctness and completeness of the Information. CBRE does not accept or assume any responsibility or liability, direct or consequential, for the Information or the recipient's reliance upon the Information. The recipient of the Information should take such steps as the recipient may deem necessary to verify the Information prior to placing any reliance upon the Information. The Information may change and any property described in the Information may be withdrawn from the market at any time without notice or obligation to the recipient from CBRE. CBRE and the CBRE logo are the service marks of CBRE Limited and/or its affiliated or related companies in other countries. All other marks displayed on this document are the property of their respective owners. All Rights Reserved.

CBRE