



# SUITE 350

## 2,662 SF

### ASKING RATE

Please contact listing agents

### ADDITIONAL RENT

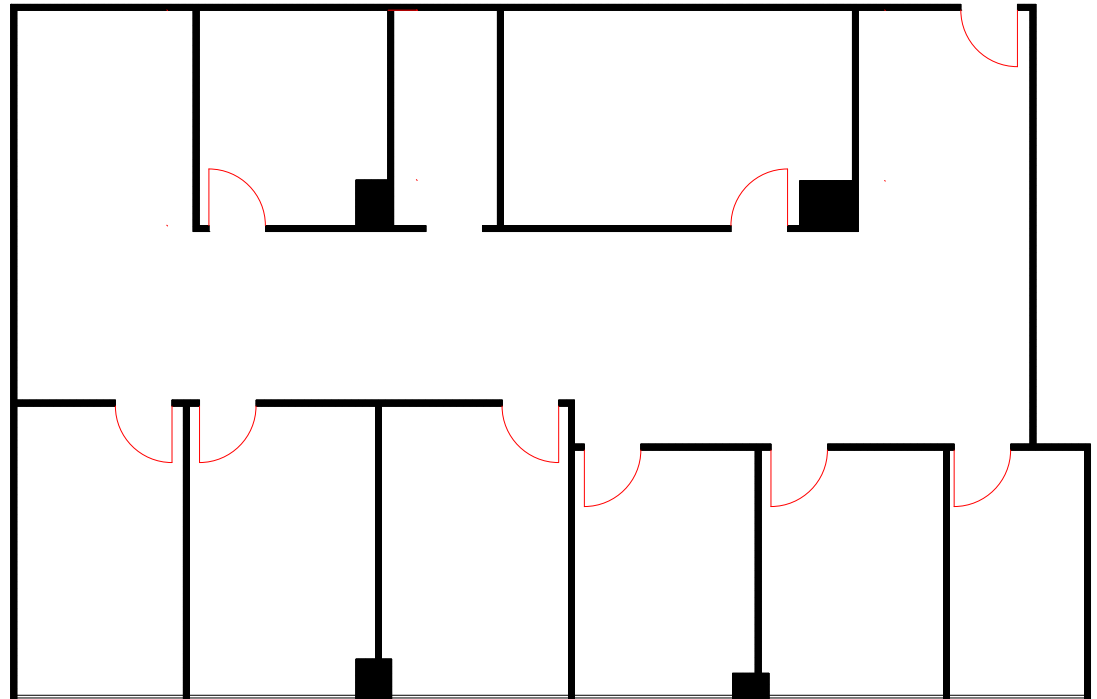
\$22.49 psf/pa (2026 estimate)

### AVAILABILITY

Immediate

### NOTES

6 offices, 2 meeting rooms,  
reception, and open work area



MARK CHAMBERS\*

Executive Vice President  
604 998 6005

[Mark.Chambers@jll.com](mailto:Mark.Chambers@jll.com)

GRAHAM HYSLOP

Associate  
604 354 7284

[Graham.Hyslop@jll.com](mailto:Graham.Hyslop@jll.com)

\*Personal Real Estate Corporation