

FOR SALE

15,000 SF COMMERCIAL LOT WITH HIGHWAY FRONTAGE
729 TRANS CANADA FRONTAGE ROAD, SICAMOUS, BC



Marcus & Millichap

1100 - 1111 West Georgia Street
Vancouver, BC V6E 4M3
(604) 638-2121

Boe Irvani

Personal Real Estate Corporation
Senior Director
(604) 675-5253

Boe.Irvani@MarcusMillichap.com

Matthew Syberg-Olsen

Associate
(604) 449-4611

Matthew.SybergOlsen@marcusmillichap.com

OPPORTUNITY

At nearly 16,000 square feet, this fully serviced, C-2 Highway Commercial-zoned property offers an owner/user a wide range of opportunities including recreation equipment rental, restaurant, health clinic, vehicle sales, service and repair, towing, warehousing and tourism activities. With excellent visibility from the Trans Canada Highway, and a central location in the Revelstoke/Vernon/Salmon Arm corridor, this location sees average daily traffic volumes of roughly 6,000 vehicles, nearly doubling to around 11,000 in the summer months (per BC Transportation and Infrastructure). Available immediately. Call brokers for more information.

OFFERING HIGHLIGHTS



Possession
Immediate



Zoning
Flexible C-2 Highway Commercial allows for a wide variety of uses



Site Size
15,991 SF



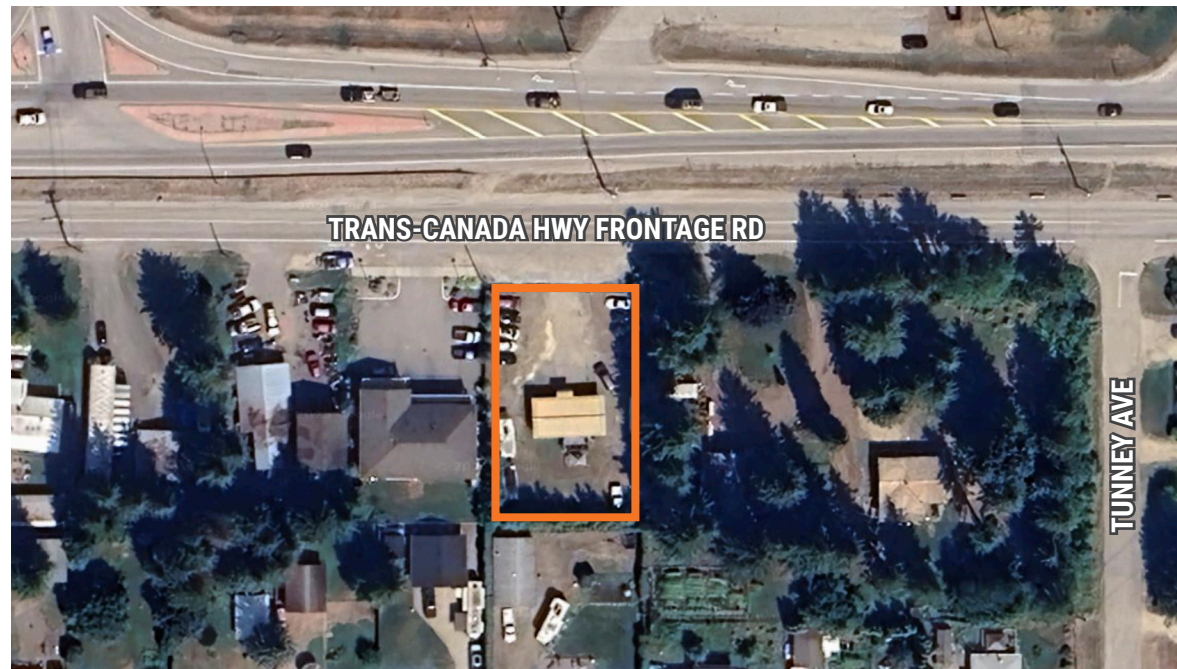
Location
Excellent exposure and access to the Trans Canada Highway



Asking Price
\$359,000



Marcus & Millichap



729 TRANS-CANADA FRONTAGE RD | SICAMOUS