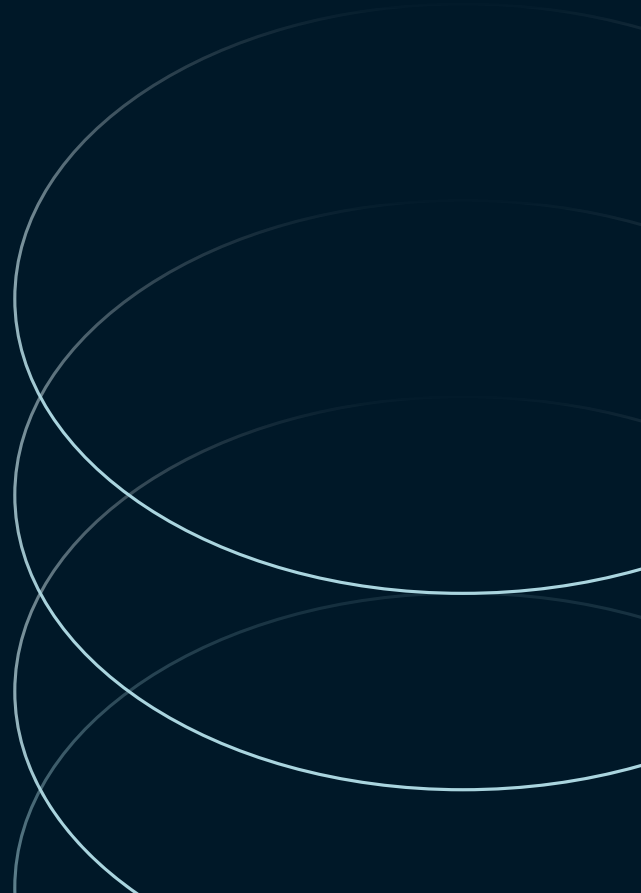
 **JLL** SEE A BRIGHTER WAY

For Lease

Technology Enterprise Facility III
6190 Agronomy Road
Vancouver, BC



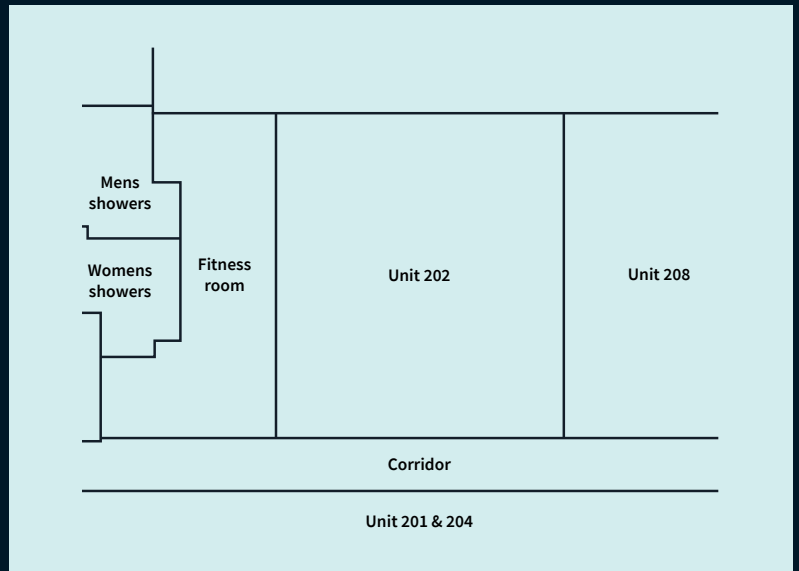
THE BUILDING

Technology Enterprise Facility III (TEF III) is the first LEED-Certified research facility in Canada. The building provides custom space for a wide range of wet lab, dry lab, office and information technology tenants. TEF III's modern architectural design and sustainable features offer tenants a superior working environment. Other features include; high-speed fibre optics, wireless technology, and a state-of-art meeting facility with ocean views. Located in the heart of the UBC Campus, blocks from the major bus terminal on campus.

SUITE 202

Some existing improvements in place.

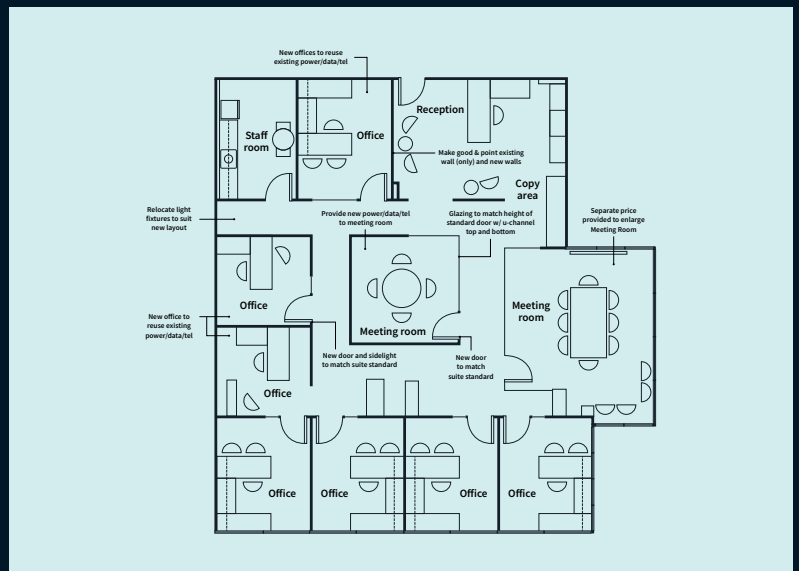
Size	1,879 s.f.
Availability	August 1, 2026
Basic Rent	Contact listing broker
Additional Rent	\$16.78 psf/pa (est)

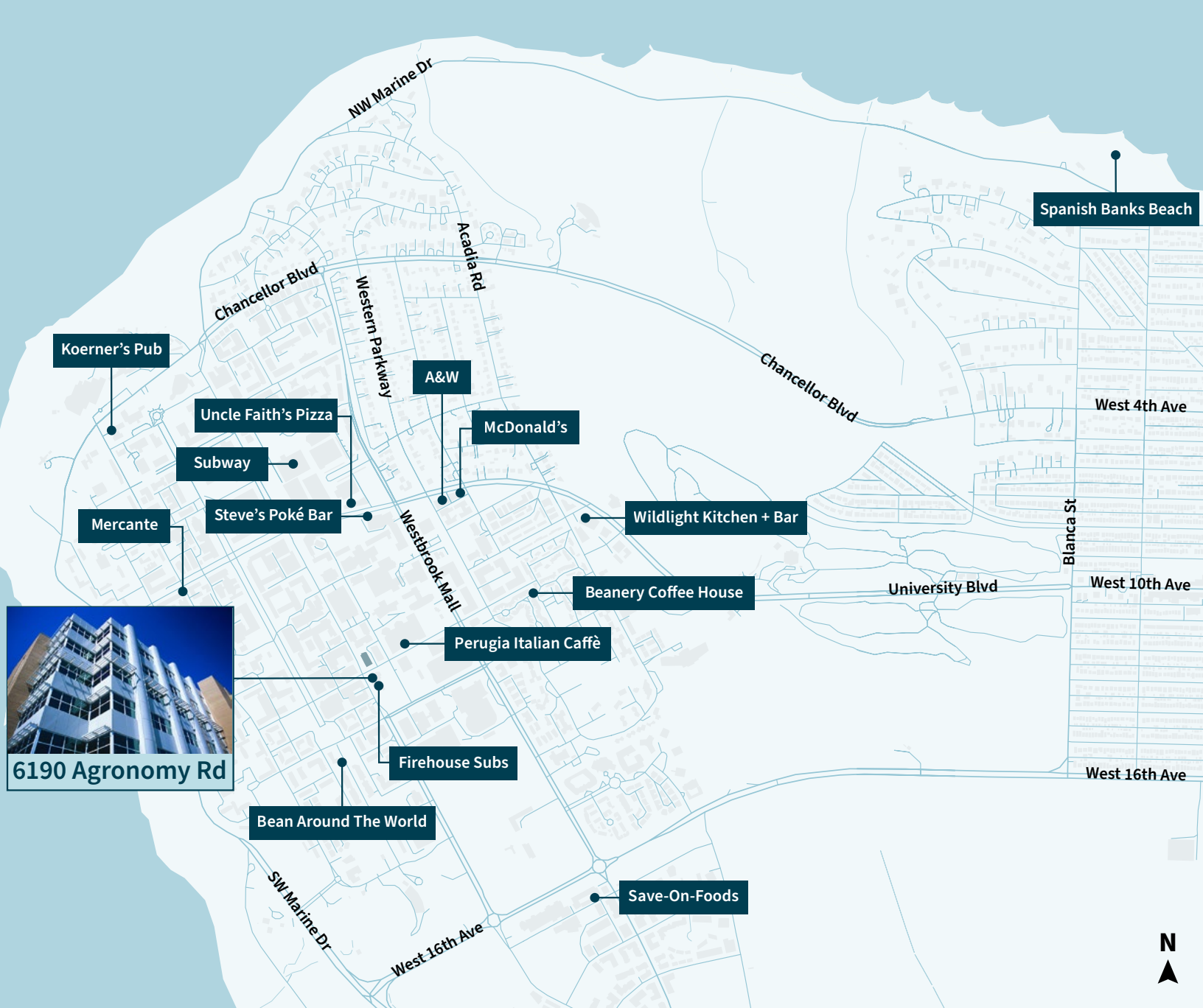


SUITE 305

Well improved office premises including 7 private offices, reception area, staff room, small meeting room and large boardroom.

Size	2,723 s.f.
Availability	Immediately
Basic Rent	Contact listing broker
Additional Rent	\$16.78 psf/pa (est)





6190 Agronomy Rd

JLL SEE A BRIGHTER WAY

Mark Chambers*
Executive Vice President
 mark.chambers@jll.com
 +1 604 998 6005

Although information has been obtained from sources deemed reliable, neither Owner nor JLL makes any guarantees, warranties or representations, express or implied, as to the completeness or accuracy as to the information contained herein. Any projections, opinions, assumptions or estimates used are for example only. There may be differences between projected and actual results, and those differences may be material. The Property may be withdrawn without notice. Neither Owner nor JLL accepts any liability for any loss or damage suffered by any party resulting from reliance on this information. If the recipient of this information has signed a confidentiality agreement regarding this matter, this information is subject to the terms of that agreement.