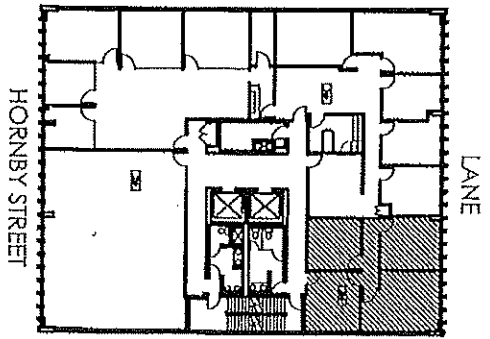
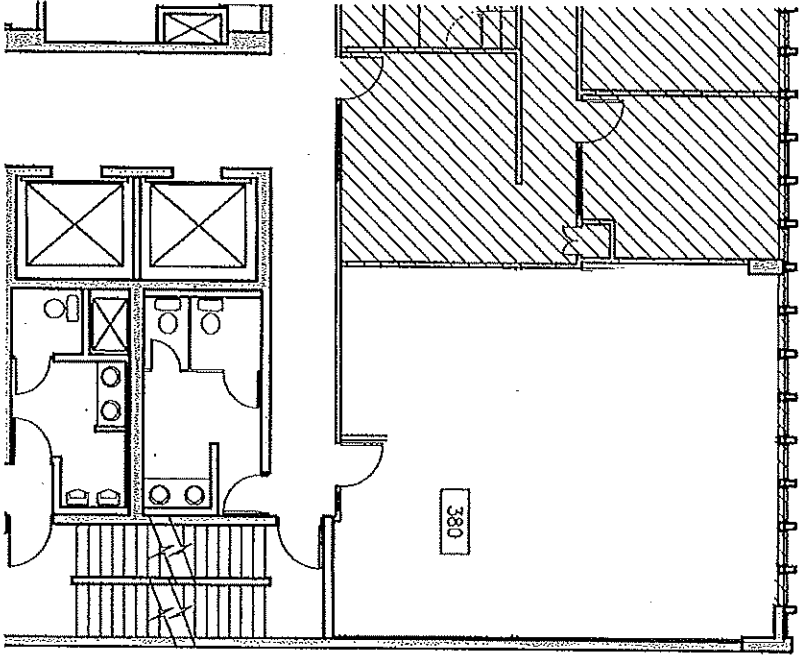


SUITE 380  
 APPROX. 1,019  
 RENTABLE SQ. FT.



SITE PLAN  
 SCALE: NOT TO SCALE

580  
 HORNBY STREET  
 SUITE 380  
 580 HORNBY STREET  
 VANCOUVER, BC

RENTABLE AREA: 1,019 SQ.FT.  
 SUBJECT TO LANDLORD VERIFICATION

October 9th, 2014  
 SCALE: NOT TO SCALE

**EXISTING FLOOR PLAN**

MANAGED BY:  
**WEST PENDER  
 PROPERTY GROUP**  
 230 - 830 West Pender Street  
 Vancouver, BC