



GITALIS
REAL
ESTATE

GTA NORTH SUBLEASE

1,817 SQ. FT.



5001 YONGE STREET

(Yonge and Sheppard)



DETAILS

ROYAL BANK BUILDING 5001 Yonge Street, Suite 203 SUB-LEASE

ADDRESS: 5001 Yonge Street, Suite 203

SIZE: 1,817 sq. ft.

PRICE: \$18.00/sq. ft. NET

LOCATED IN THE HEART OF NORTH YORK.

- DETAILS:**
- High end office building.
 - Underground parking.
 - Two minute walk to subway, close to banks, restaurants and entertainment, Mel Lastman Square, etc.
 - Furniture may be available

CONTACT: Simon Gitalis, Vice – President Leasing*
Gitalis Real Estate, Brokerage
416-840-3431
simon@gitalis.com

*Salesperson



CONFIDENTIALITY AND LIMITING CONDITIONS

The information contained herein has been obtained from sources such made available to Gitalis Real Estate Inc. and does not purport to contain all the information a prospective Sub-Lessor may require. This package has been compiled solely for the convenience of prospective Sub-Lessors to assist them in their determination of whether they wish to express further interest in purchasing the property. This package does NOT form part of any terms or conditions of Lease. Gitalis Real Estate Inc. has not independently verified any such information and assumes no responsibility for its accuracy or completeness and has no authority to bind Gitalis Real Estate to any representation or warranty.

Abe Gitalis Real Estate Inc. expressly reserves the right, at their sole discretion, to reject any or all proposals or expressions of interest for the Property; to terminate discussions with any party at any time, with or without notice; to withdraw the fee simple interest in the Property from the market, at any time, with or without notice; and to negotiate and enter into binding agreements with respect to the interest with any party at any time, all without any compensation to any party in all cases.

FLOOR PLAN

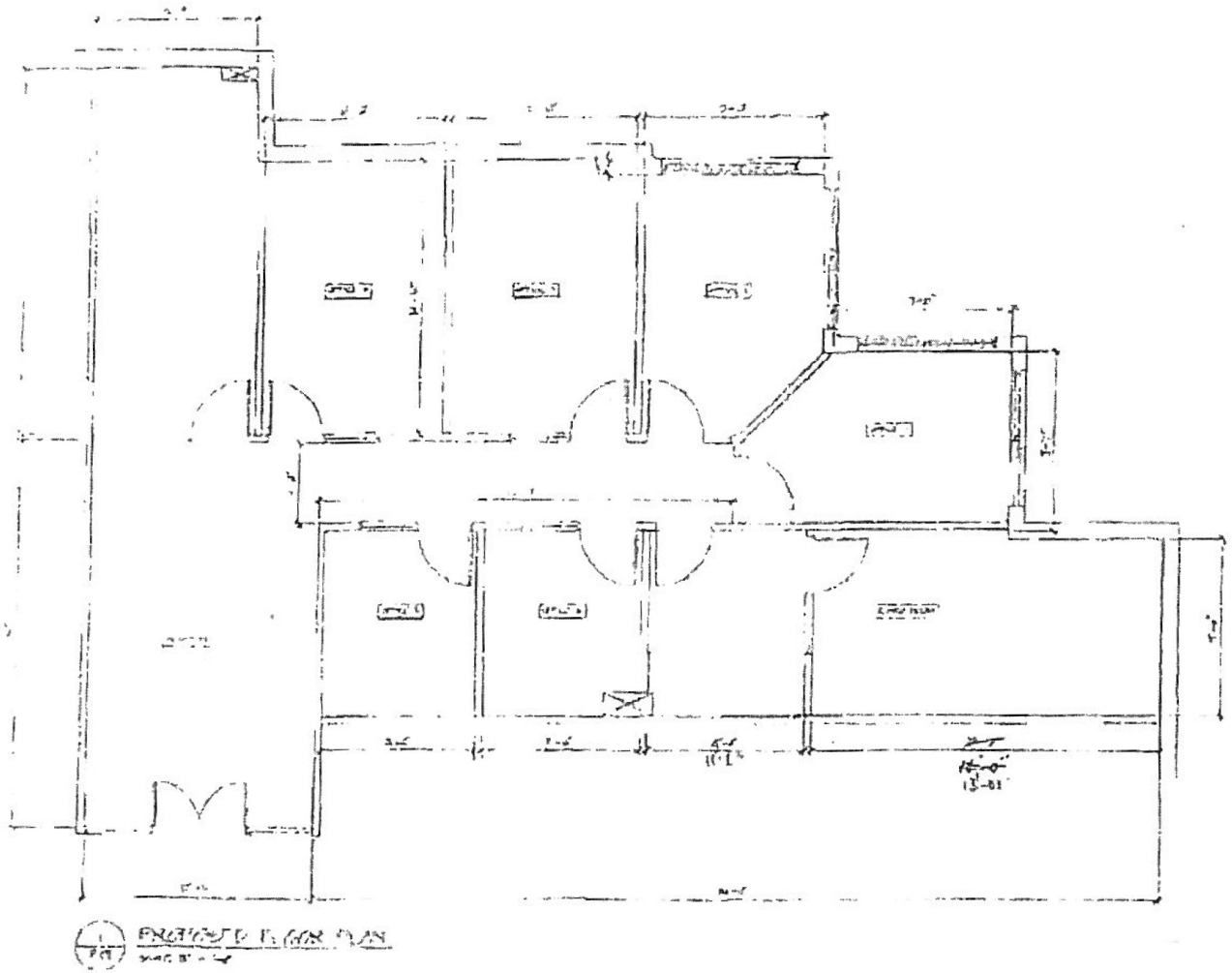
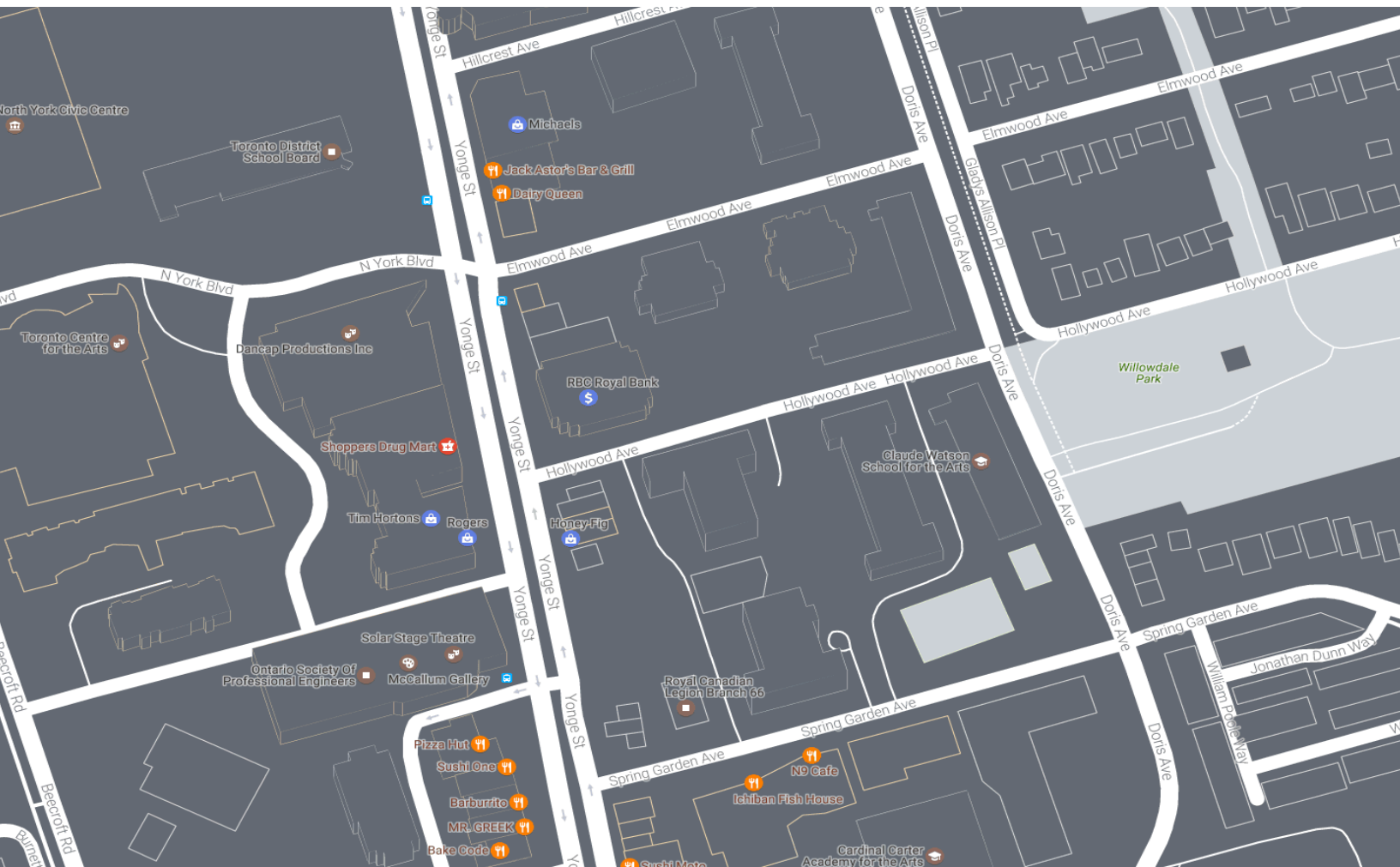


Image may not be exactly as per the as built.

LOCATION



The building is located on the east side of Yonge Street just North of Sheppard Avenue and across from the shops of Madison Centre and with the Royal Bank in the lobby. This location offers convenient access to cultural, recreational and shopping amenities.



WALK SCORE: 97%

COMMUTE TO DOWNTOWN TORONTO:



33 min



37 min



52 min



60+ min