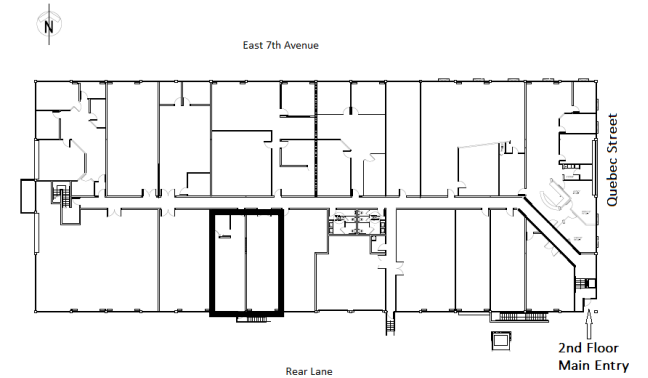
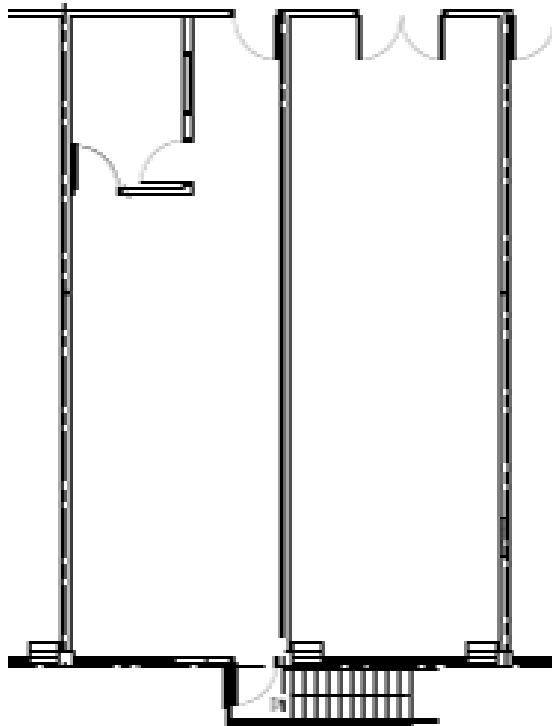
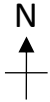


# 2323 Quebec Street, Vancouver, BC



## Suite 223 1,580 square feet

Description: Light Industrial with wholesale and manufacturing use. Open area with sink and storage room.

This is a representation for marketing purposes only and should not be used for measurements of any kind. This drawing is not to scale.

**TPMG CAPITAL**

Real Estate Acquisition  
Management  
Leasing