

Suite 200

885 Dunsmuir Street

Vancouver, BC

Below Market Sublease



Premises

The premises are in excellent, move-in condition with furniture in place. 35 workstations and multiple meeting rooms.



Available Area
Suite 200 - 6,594 SF



Occupancy
Immediately



Sublease Rate
Contact Agent



Term
To January 30, 2029



Taxes & Op. Costs
\$18.99 PSF (2026 estimate)



Parking
2 underground parking stalls



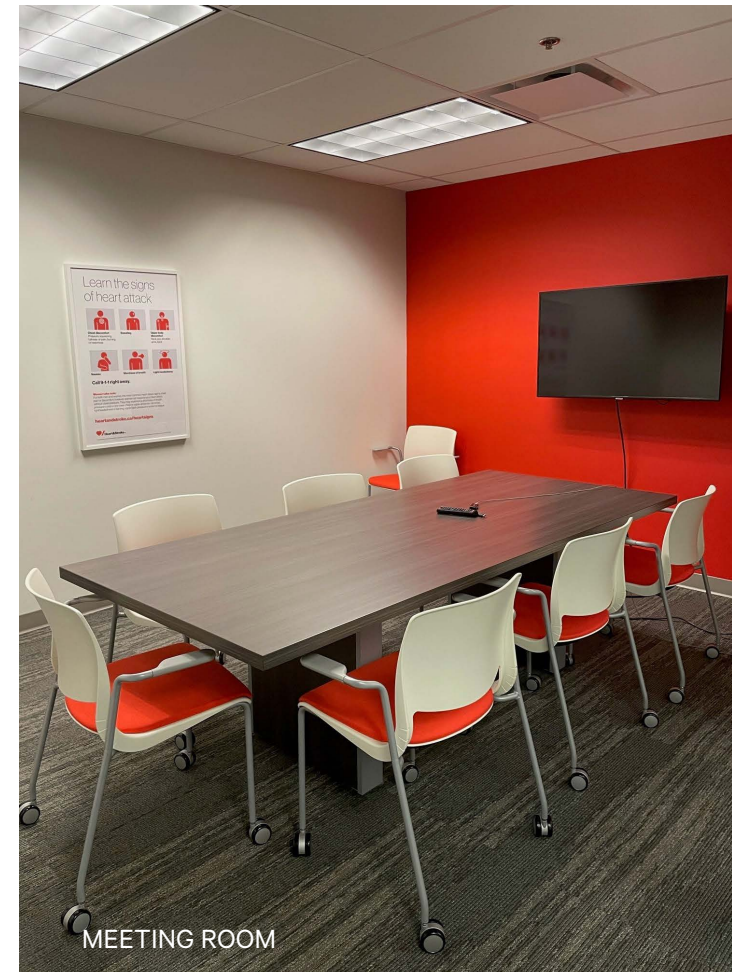
Furniture
Available



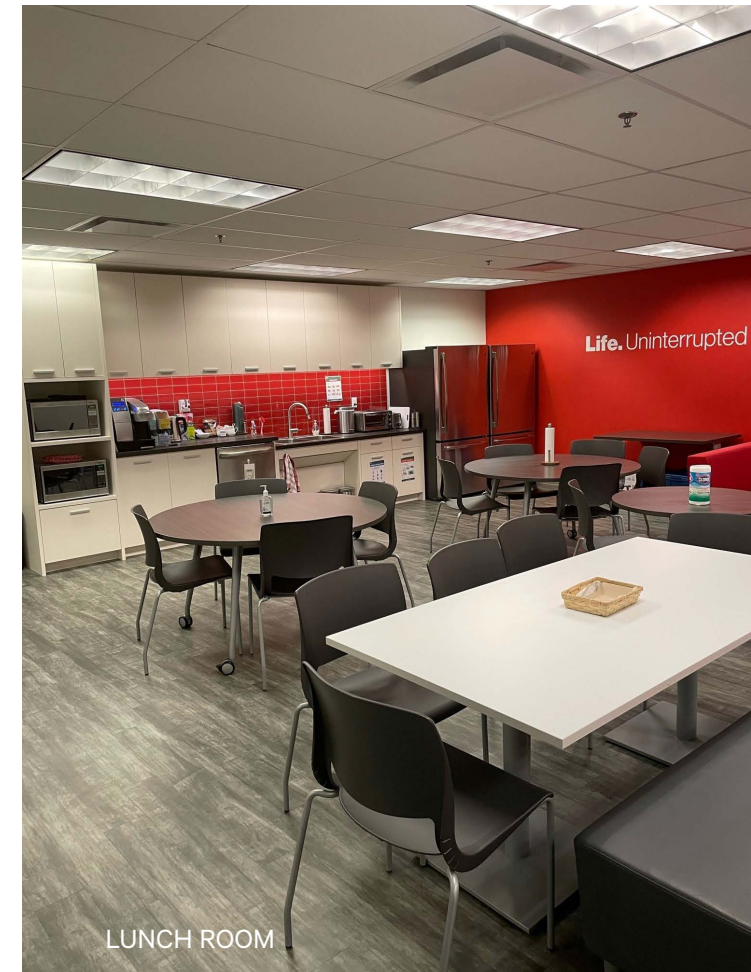
BOARDROOM



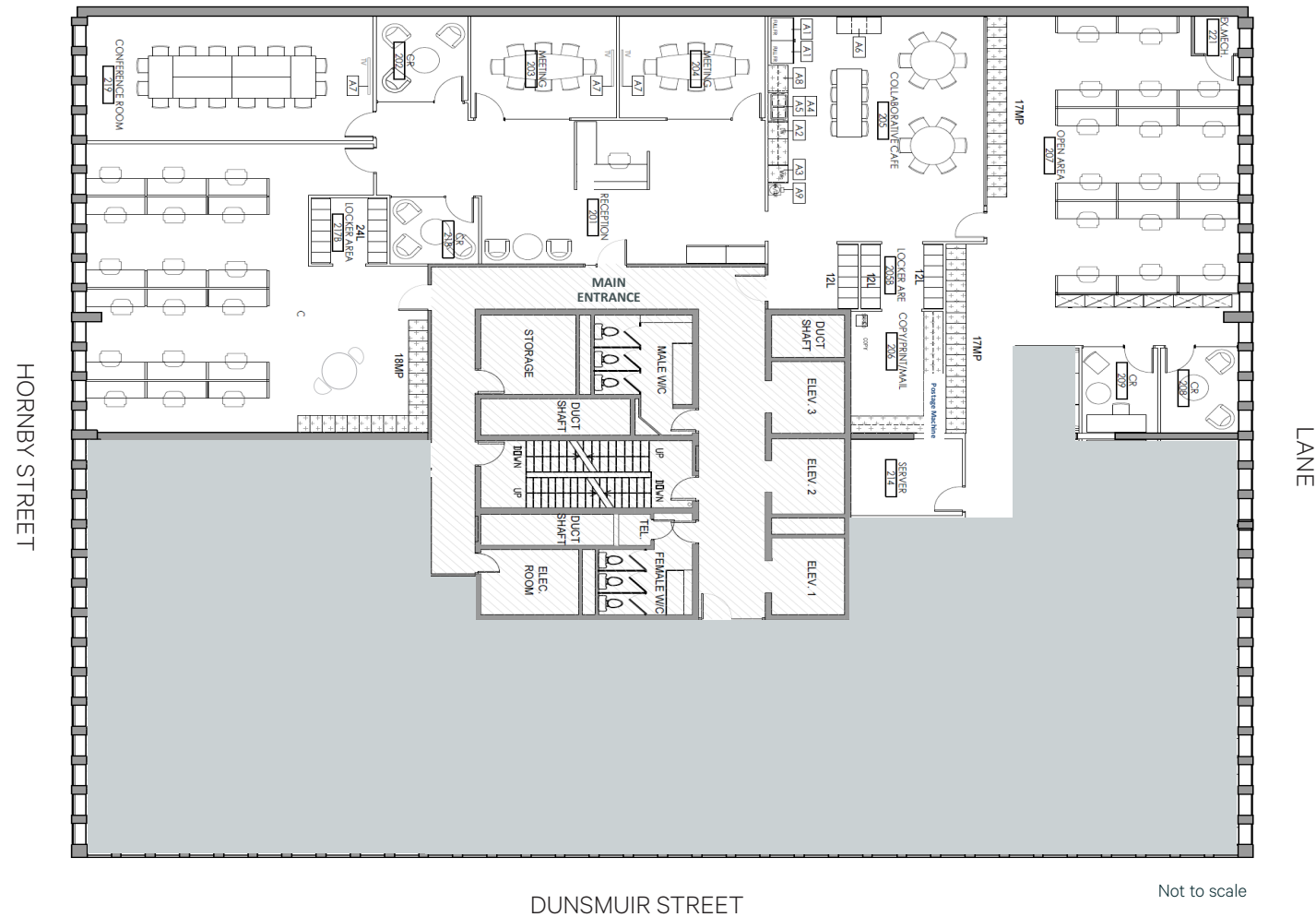
WORKSTATIONS



MEETING ROOM



LUNCH ROOM



HORNBY STREET

LANE

DUNSMUIR STREET

Not to scale

Location

Centrally located on the north east corner of Hornby and Dunsmuir Streets in the heart of Downtown Vancouver's financial district.

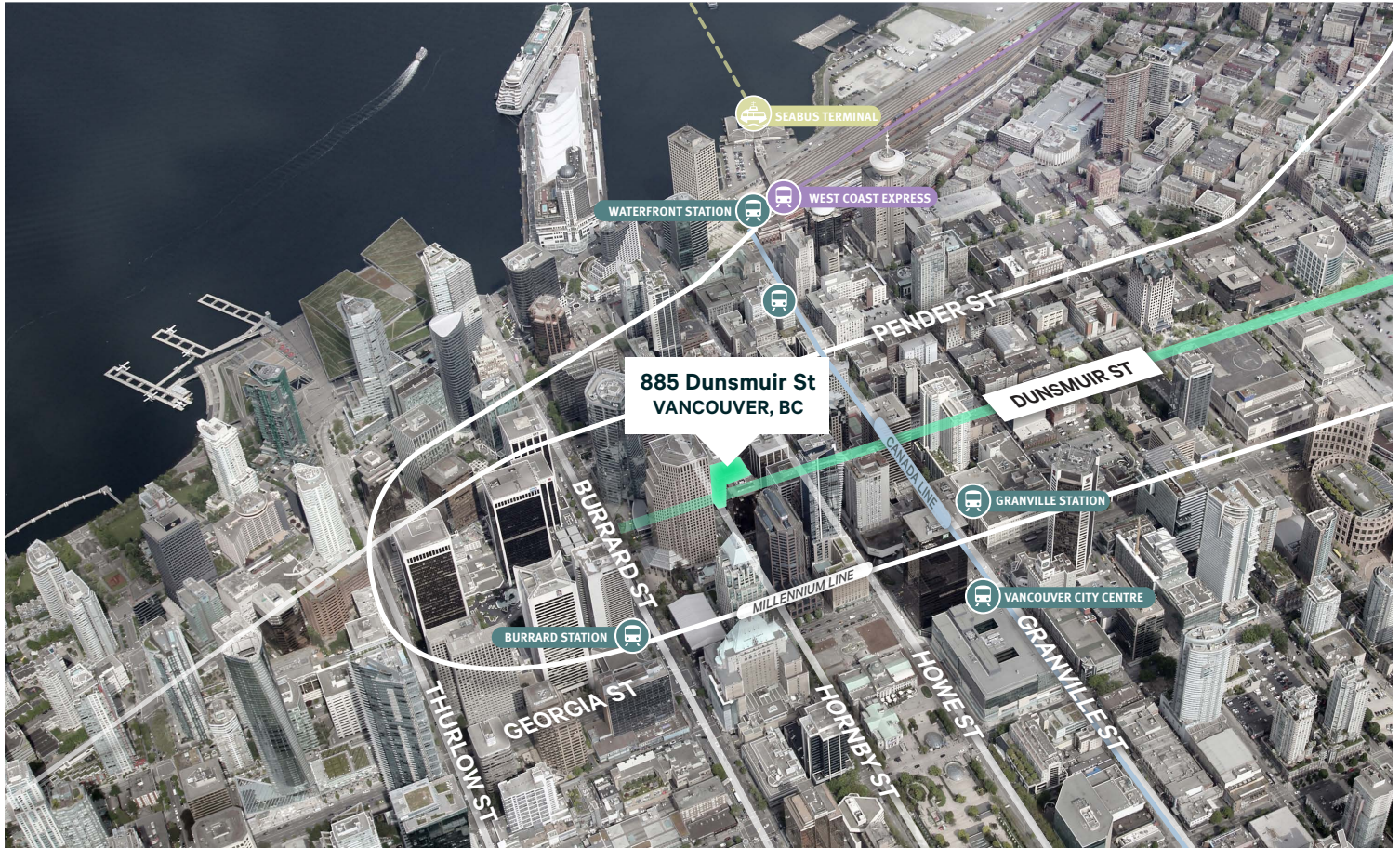
76 82 100

VERY
WALKABLE

VERY
BIKEABLE

RIDER'S
PARADISE

walkscore.com



Contact Agent

Geoff Donelly

Personal Real Estate Corporation
Senior Vice President
Advisory & Transaction Services

geoff.donelly@cbre.com
604 662 5130



CBRE Limited | 1021 West Hastings Street | #2500 | Vancouver, BC V6E 0C3 | www.cbre.ca

This disclaimer shall apply to CBRE Limited, Real Estate Brokerage, and to all other divisions of the Corporation; to include all employees and independent contractors ("CBRE"). The information set out herein, including, without limitation, any projections, images, opinions, assumptions and estimates obtained from third parties (the "Information") has not been verified by CBRE, and CBRE does not represent, warrant or guarantee the accuracy, correctness and completeness of the Information. CBRE does not accept or assume any responsibility or liability, direct or consequential, for the Information or the recipient's reliance upon the Information. The recipient of the Information should take such steps as the recipient may deem necessary to verify the Information prior to placing any reliance upon the Information. The Information may change and any property described in the Information may be withdrawn from the market at any time without notice or obligation to the recipient from CBRE. CBRE and the CBRE logo are the service marks of CBRE Limited and/or its affiliated or related companies in other countries. All other marks displayed on this document are the property of their respective owners. All Rights Reserved.

Mapping Sources: Canadian Mapping Services canadamapping@cbre.com; DMTI Spatial, Environics Analytics, Microsoft Bing, Google Earth.