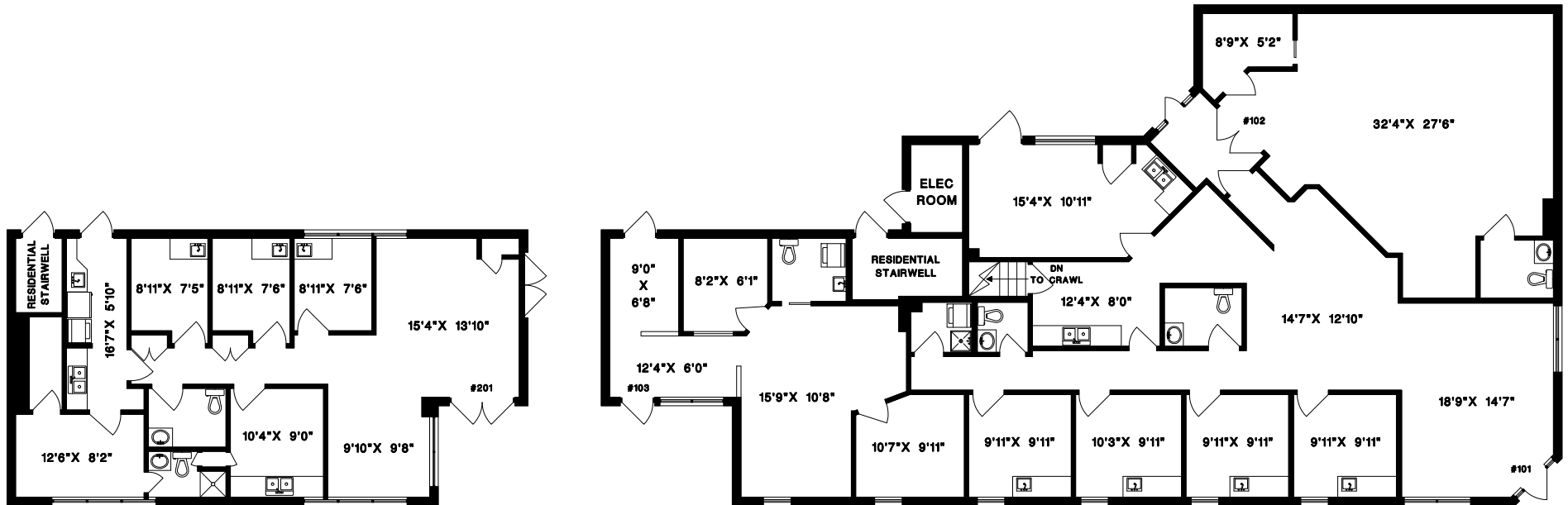


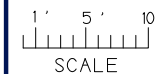
12005 238B STREET,
MAPLE RIDGE, B.C.



AREA CERTIFICATION: NOVEMBER 3, 2021

As evidenced by our signature and in accordance with the ANSI/BOMA Z65.1-2010 Office Buildings: Standard Methods of Measurement, we hereby certify the Gross Rentable Area of this BUILDING to be 4,535 Square Feet.

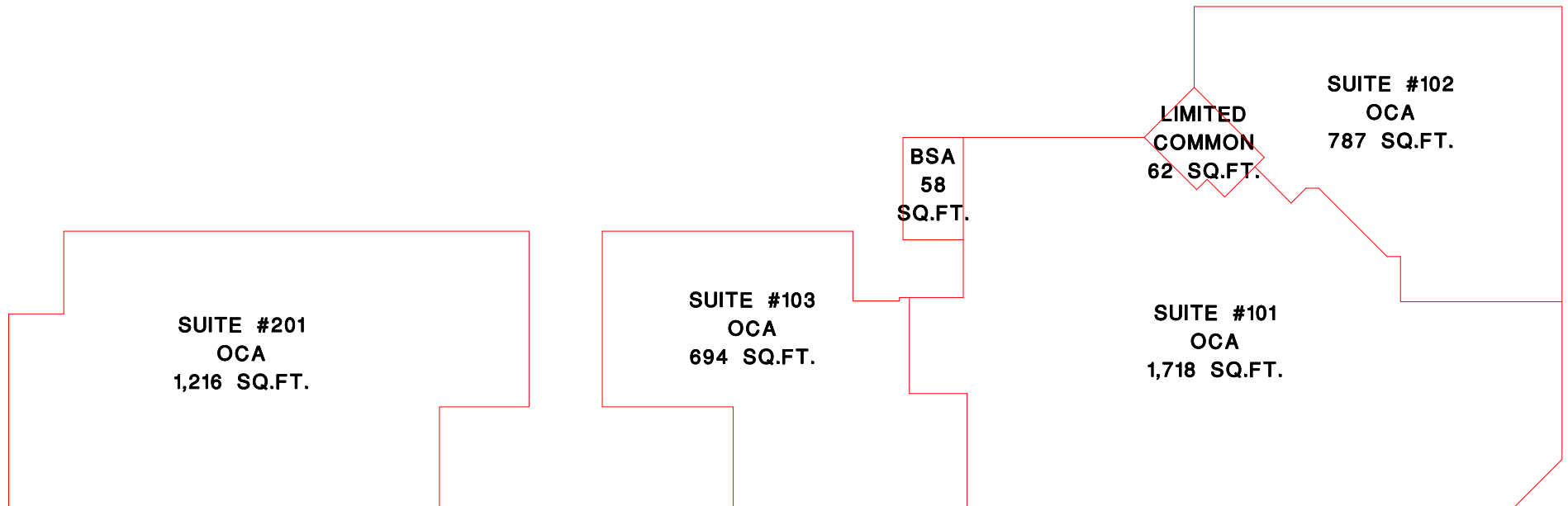
CRAIG W. NICHOLS
MEASURE MASTERS



DRAWN BY: CN
DATE: NOVEMBER 2021
REVISED:



12005 238B STREET,
MAPLE RIDGE, B.C.

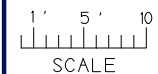


AREA CERTIFICATION: NOVEMBER 3, 2021

As evidenced by our signature and in accordance with the ANSI/BOMA Z65.1-2010 Office Buildings: Standard Methods of Measurement, we hereby certify the Gross Rentable Area of this BUILDING to be 4,535 Square Feet.

EXTERIOR GROSS AREA 4,535 SQ.FT.

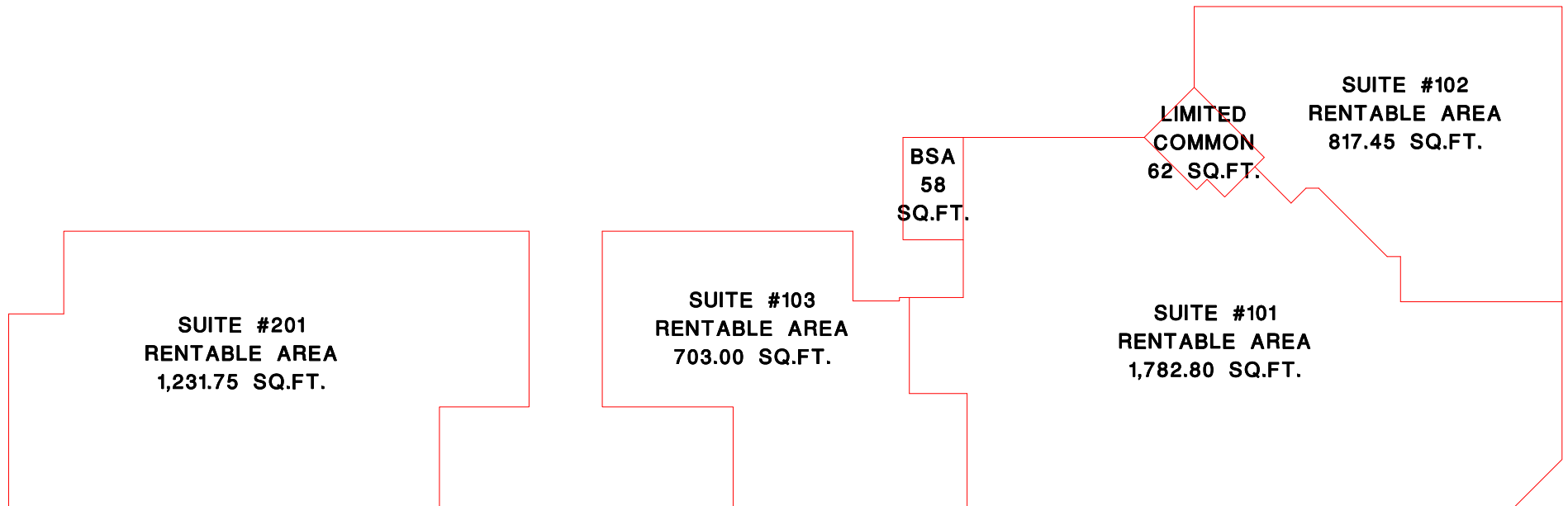
CRAIG W. NICHOLS
MEASURE MASTERS



DRAWN BY: CN
DATE: NOVEMBER 2021
REVISED:



12005 238B STREET,
MAPLE RIDGE, B.C.

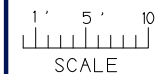


AREA CERTIFICATION: NOVEMBER 3, 2021

As evidenced by our signature and in accordance with the ANSI/BOMA Z65.1-2010 Office Buildings: Standard Methods of Measurement, we hereby certify the Gross Rentable Area of this BUILDING to be 4,535 Square Feet.

CRAIG W. NICHOLS
MEASURE MASTERS

EXTERIOR GROSS AREA 4,535 SQ.FT.



DRAWN BY: CN
DATE: NOVEMBER 2021
REVISED:



12005 238B STREET,
MAPLE RIDGE, B.C.

CGA
1,258 SQ.FT.

CGA
3,384 SQ.FT.

AREA CERTIFICATION: NOVEMBER 3, 2021

As evidenced by our signature and in accordance with the
ANSI/BOMA Z65.1-2010 Office Buildings: Standard Methods of Measurement,
we hereby certify the Gross Rentable Area of this BUILDING to be 4,535 Square Feet.



CRAIG W. NICHOLS
MEASURE MASTERS



1' 5' 10'
SCALE

DRAWN BY: CN
DATE: NOVEMBER 2021
REVISED:

MEASURE MASTERS
SURREY/WHITE ROCK
(604) 539-0285
surrey@measuremasters.ca