

SCHREDER
BROTHERS
REAL ESTATE GROUP

FOR SALE

5108 216 Street
Langley, BC

Vacant & Flat Development Site

- » Court-Ordered Sale
- » 0.353 Acres (15,377 Square Feet)
- » M1-B (Service Industrial) Zoning
- » Murrayville Commercial OCP

UPDESH GREWAL
Personal Real Estate Corporation

JAMIE SCHREDER
Personal Real Estate Corporation

MAGNUS HEANEY
Commercial REALTOR®



PROPERTY INFO

COURT ORDERED SALE SOLD AS IS WHERE IS

AREA

Land Size: 15,377 ft²

Land Size Acres: 0.353

PROPERTY TAX

\$7,579.21 (2024)

ASKING PRICE

\$1,800,000



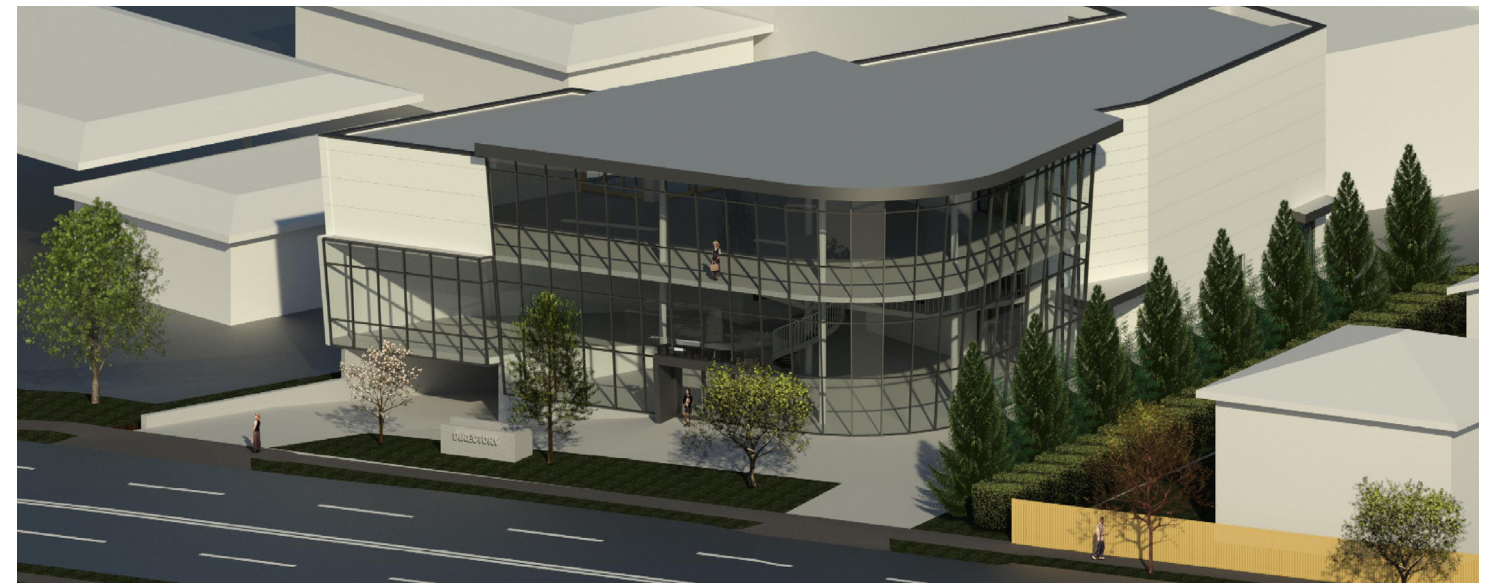
5108 216 Street (Langley, BC)

This 0.353 Acre (15,377 sq ft) vacant site is available via a court-ordered sale in the heart of Murrayville. Zoned M1-B (Service Industrial) and designated in the Murrayville Commercial OCP; the property allows for a wide range of uses and can suit developers, investors, and/or owner-users.

Murrayville is a highly regarded neighbourhood within the Township of Langley and offers a balanced environment of residential, agricultural, institutional, and commercial uses; and this particular site provides excellent access to amenities and transportation routes. Don't miss this unique chance to secure valuable industrial zoned land in a growing community!

- » Court-Ordered Sale
- » 0.353 Acres (15,377 Square Feet)
- » M1-B (Service Industrial) Zoning

Potential Development Concept*



*Purchaser to verify measurements and validity/feasibility of proposed re-development if deemed important to them.



DRIVE TIMES

CLOVERDALE	21 MINS
BURNABY	34 MINS
WHITE ROCK	35 MINS
SURREY	35 MINS
ABBOTSFORD	36 MINS
MAPLE RIDGE	40 MINS
DELTA	50 MINS

JAMIE SCHREDER
Personal Real Estate Corporation

UPDESH GREWAL
Personal Real Estate Corporation

MAGNUS HEANEY
Commercial REALTOR®

LORI NICOL
Unlicensed Assistant



📞 604-530-0231

✉️ COMMERCIAL@SCHREDERS.CA

🌐 WWW.SCHREDERS.CA