

FOR LEASE

2401 Yonge St – LL06
Yonge St × Eglinton Ave W



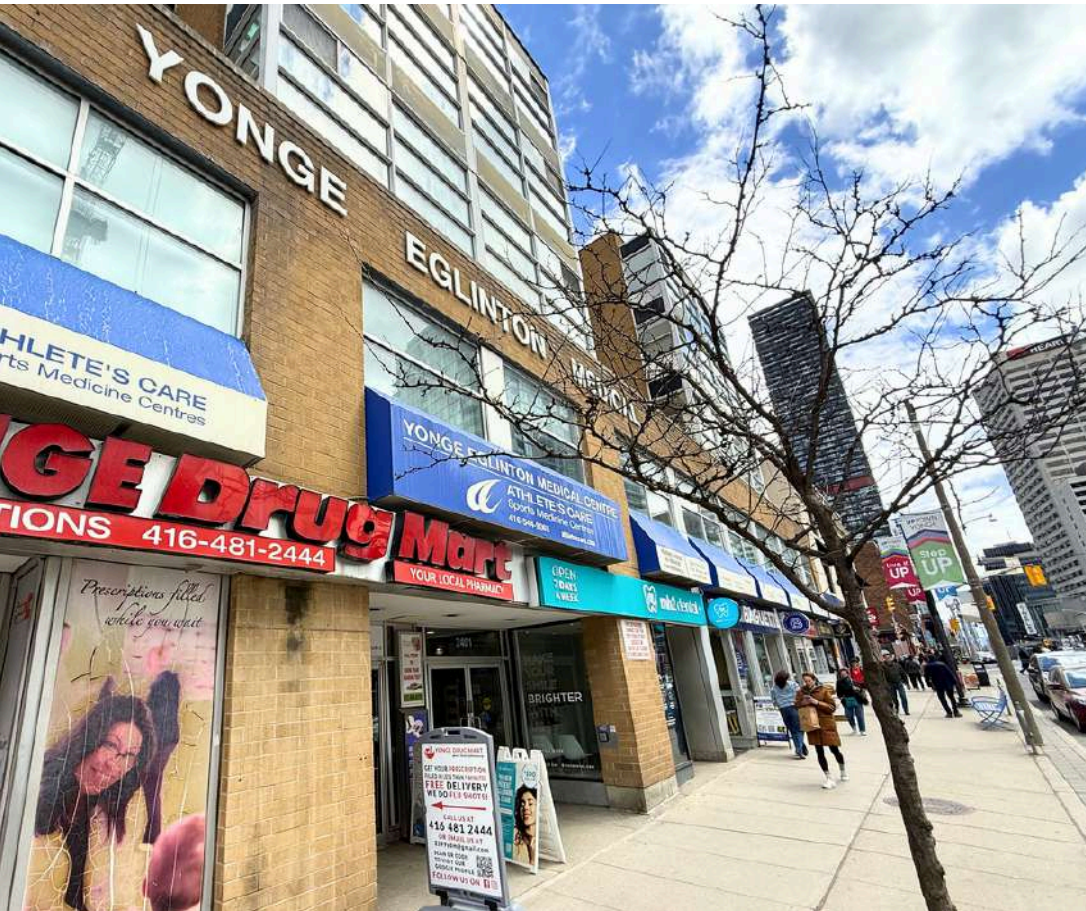
LL06 2401 YONGE ST

Unit:	Lower Level Commercial Space
Lease Rate:	Ask Listing Agent
TMI:	\$30.25 / sq ft
Size:	Approx. 738 sq ft
Property Type:	Medical / Beauty / Office

Highlights

- Move-in ready clinic / treatment space
- Functional layout with multiple rooms
- Reception / waiting area
- Sink + cabinetry + storage
- Ideal for medical / aesthetic / wellness use
- Clean, professional environment

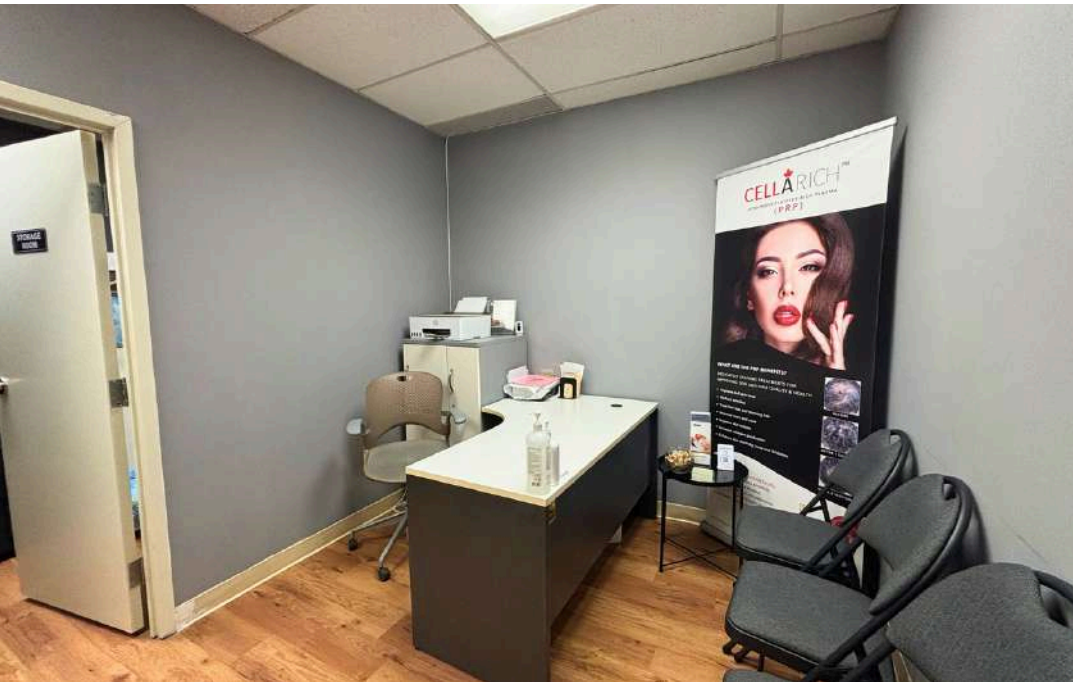
Ideal for medical, aesthetic, or wellness professionals



O: (647) 354-7467

 downtowntoronto-realestate.com

2401 Yonge St – LL06



O: (647) 354-7467

 downtowntoronto-realestate.com

CONTACT US:

Helen Ye

Commercial Realtor

(647) 981-1468

helen@downtowntoronto-realestate.com

Eddie Chan

Commercial Realtor

(647) 281-6109

eddie@downtowntoronto-realestate.com



Area Realty Inc. Brokerage
650 College St. Toronto, M6G 1B7
(416) 474-5699