

# FOR LEASE

1370 CLYDE AVENUE

Ottawa, ON K2G 3H8



**JOHN ZINATI**  
+1(613)880.4106  
john@zinatirealty.com

**TANYA WOLFGRAM**  
+1(613)447.2205  
tanya@zinatirealty.com

92 CENTREPOINTE DRIVE • OTTAWA, ON K2G 6B1 • 613.853.4106 • ZINATIREALTY.COM

**ZINATI**  
REALTY  
COMMERCIAL BROKERAGE



### OFFERING SUMMARY

Available Space:	1,105 SF - 8,151 SF
Lease Rate:	\$38.00 SF/yr
Additional Rent	approx. \$14.00 SF/yr

### PROPERTY OVERVIEW

Prime retail space along the Merivale/Clyde corridor with high traffic count and excellent visibility. Multiple ground floor suites available ranging from 1,109 SF up to 8,151 SF. Great opportunity for all types of uses including medical, dental, fitness, grocery, restaurant, retail store and more. Building will be demised as per floor plan to accommodate multiple tenancies. Future exterior updates planned as shown in building mock-ups.

### PROPERTY HIGHLIGHTS

- Utilities extra
- Available August 1, 2026
- 200-400 amp/600 volt electrical power
- Zoning: AM10
- Ample onsite parking available
- Signage opportunity

**JOHN ZINATI**

+1(613)880.4106

john@zinatirealty.com

**TANYA WOLFGRAM**

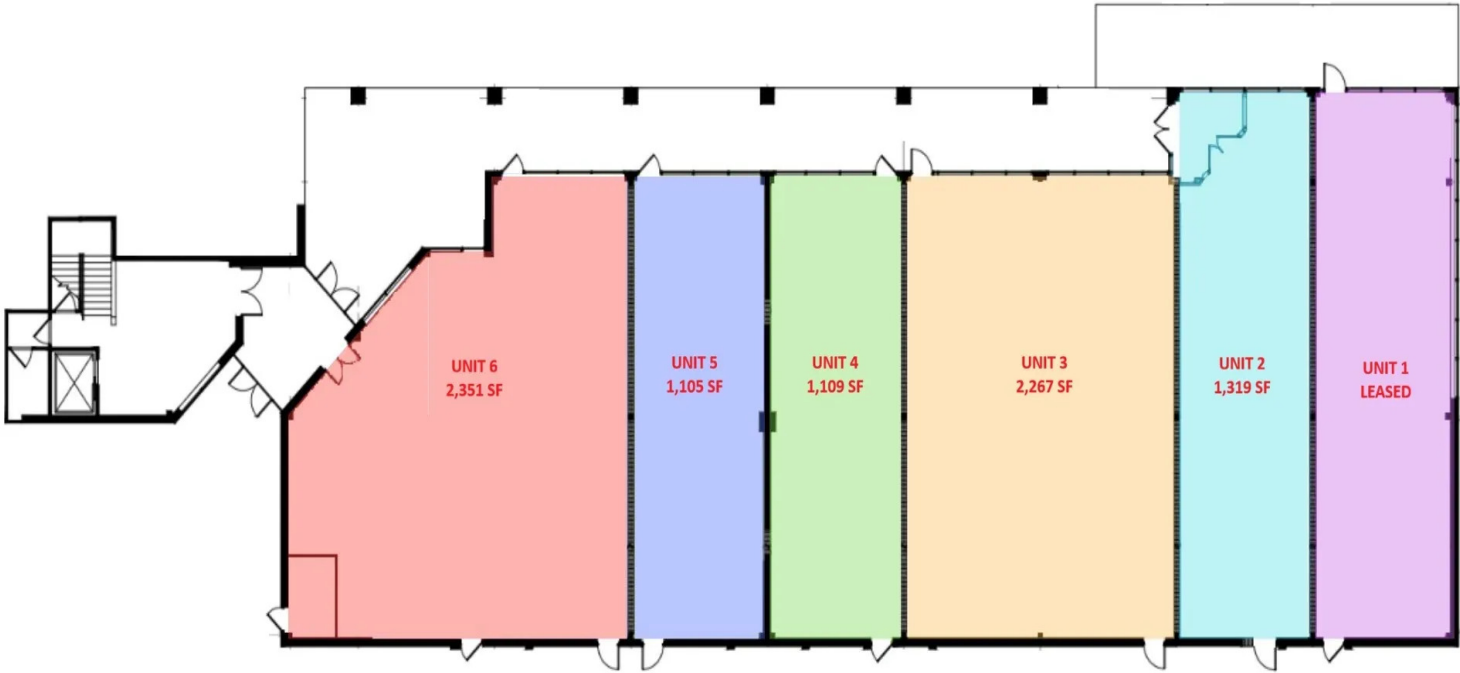
+1(613)447.2205

tanya@zinatirealty.com

92 CENTREPOINTE DRIVE • OTTAWA, ON K2G 6B1 • 613.853.4106 • ZINATIREALTY.COM

1370 CLYDE AVENUE  
OTTAWA, ON K2G 3H8

Floor Plan



**JOHN ZINATI**

+1(613)880.4106

john@zinatirealty.com

**TANYA WOLFGRAM**

+1(613)447.2205

tanya@zinatirealty.com

92 CENTREPOINTE DRIVE • OTTAWA, ON K2G 6B1 • 613.853.4106 • ZINATIREALTY.COM



# 1370 CLYDE AVENUE OTTAWA, ON K2G 3H8

Retailer Map



**JOHN ZINATI**

+1(613)880.4106

john@zinatirealty.com

**TANYA WOLFGRAM**

+1(613)447.2205

tanya@zinatirealty.com

92 CENTREPOINTE DRIVE • OTTAWA, ON K2G 6B1 • 613.853.4106 • ZINATIREALTY.COM

