

MAIN FLOOR OFFICE SPACES FOR LEASE



1791 DUBLIN AVENUE

WINNIPEG, MB



LUKE PAULSEN, Vice President, Sales & Leasing
(204) 985-1358
luke.paulsen@capitalgrp.ca
Services provided by Luke Paulsen Personal Real Estate Corporation

PROPERTY DETAILS

BUILDING AREA (+/-)	30,832 sq. ft.
AREA AVAILABLE (+/-)	Unit B: 1,600 sq. ft. Unit C: 1,229 sq. ft.
NET RENTAL RATE	\$14.95 per sq. ft.
ADDITIONAL RENT	\$7.65 per sq. ft.
ZONING	M2 Industrial
AVAILABILITY	Immediately

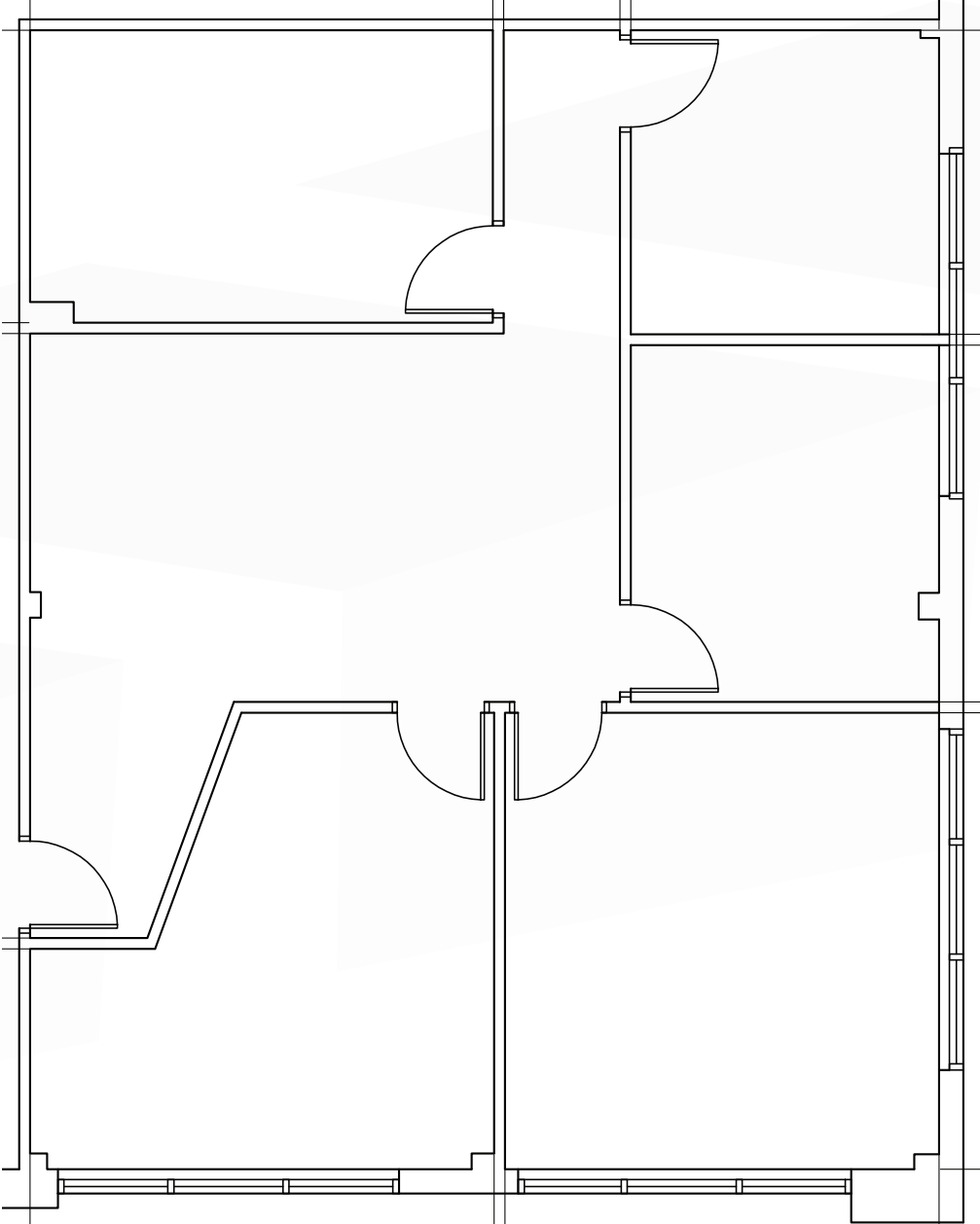
PROPERTY HIGHLIGHTS

- Signage opportunity available
- Ample on-site parking
- Located within close proximity to the amenities of Polo Park Shopping Centre, the St. James retail node and the James Richardson International Airport



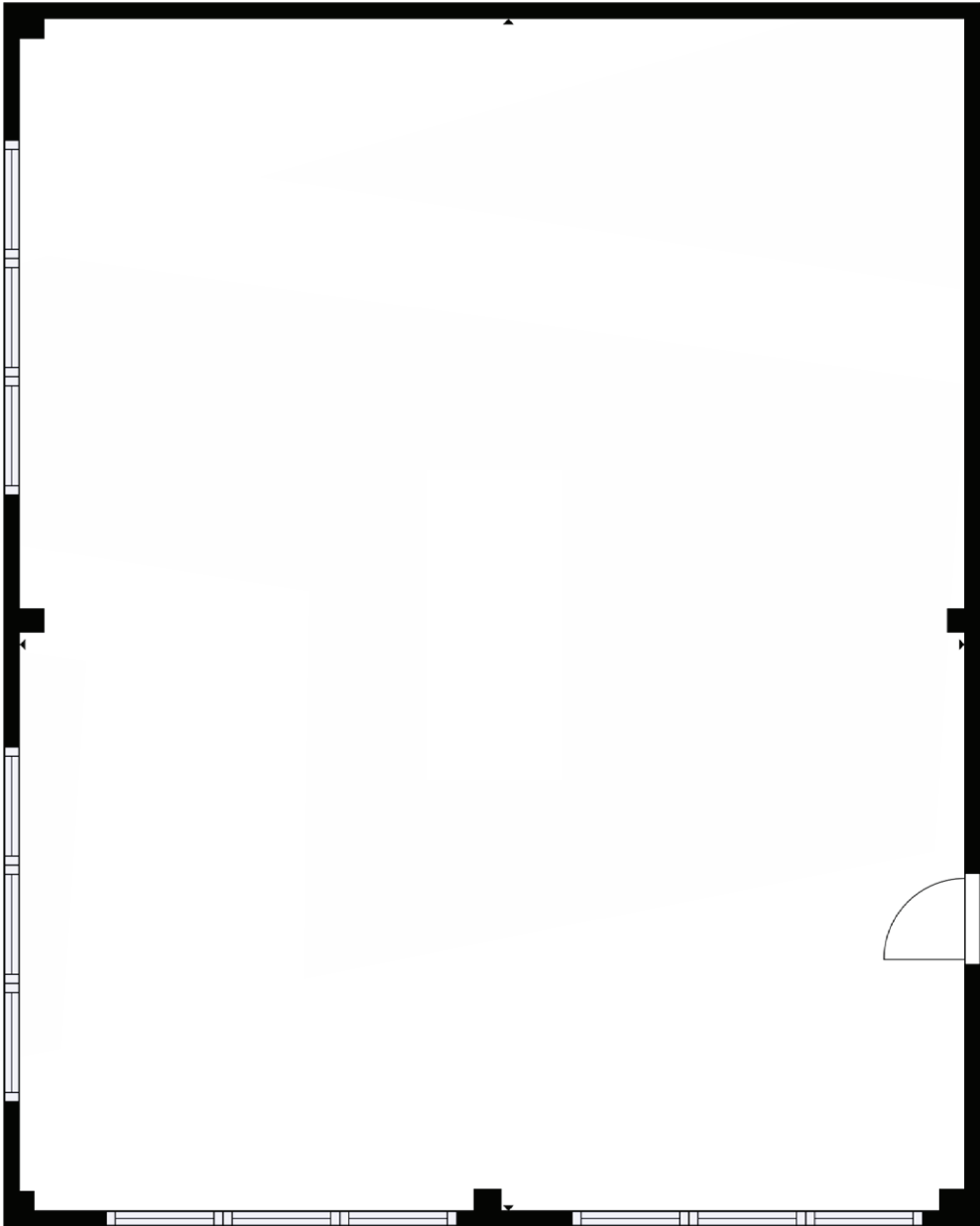
FLOOR PLAN

UNIT B



FLOOR PLAN

UNIT C

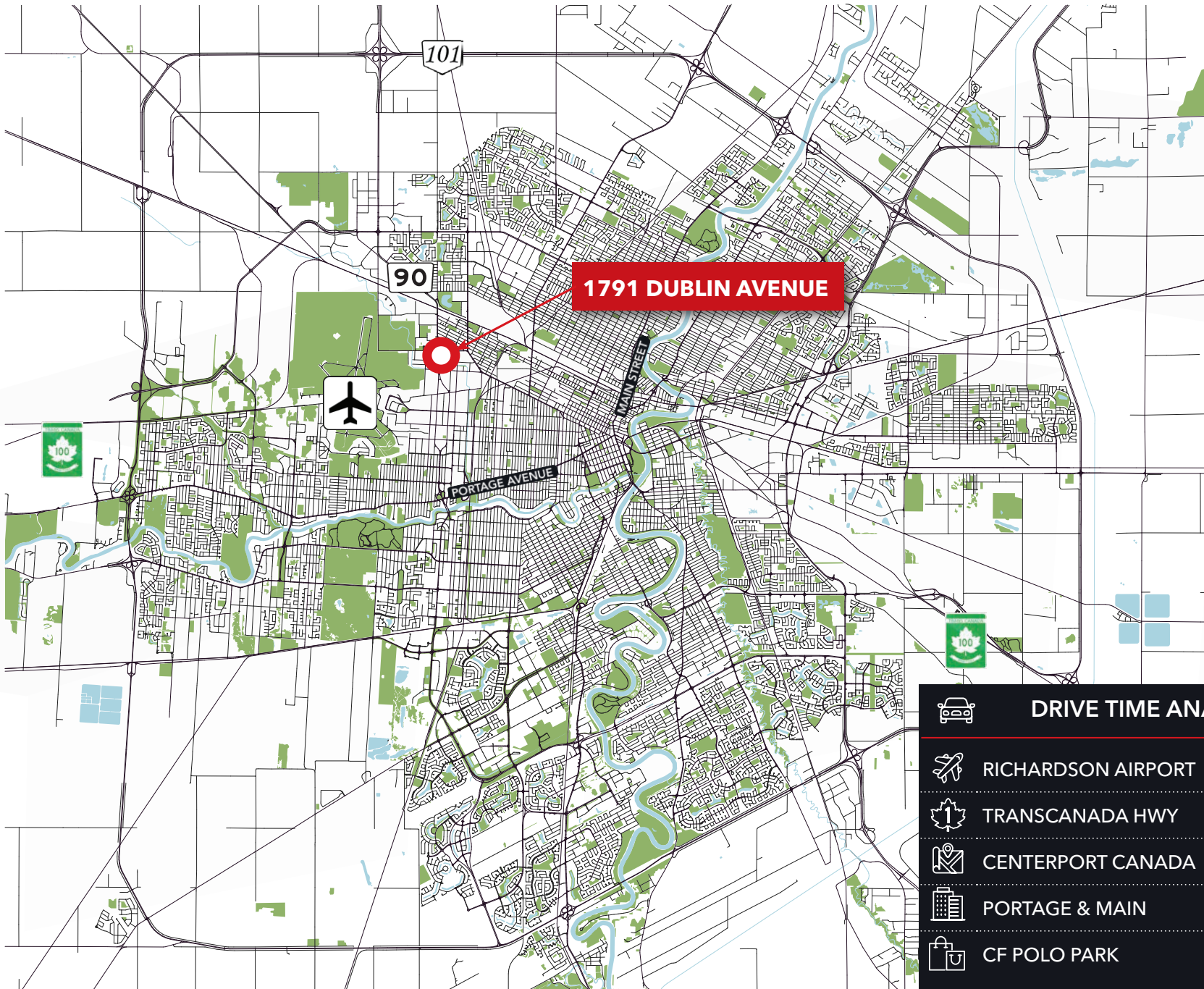


INTERIOR PHOTOS

UNIT B



LOCATION OVERVIEW



DRIVE TIME ANALYSIS		
	RICHARDSON AIRPORT	4 min. / 2.1 km
	TRANSCANADA HWY	7 min. / 4.1 km
	CENTERPORT CANADA	9 min. / 5.0 km
	PORTAGE & MAIN	18 min. / 6.1 km
	CF POLO PARK	8 min. / 3.9 km

LOCATION AERIAL



Contact

LUKE PAULSEN, Vice President, Sales & Leasing

(204) 985-1358

luke.paulsen@capitalgrp.ca

Services provided by Luke Paulsen Personal Real Estate Corporation

CAPITAL COMMERCIAL REAL ESTATE SERVICES INC.

300-570 Portage Avenue, Winnipeg, MB R3C 0G4 | T (204) 943-5700 | F (204) 956-2783 | capitalgrp.ca

Disclaimer: Capital Commercial Real Estate Services Inc. ("Capital") does not accept or assume any responsibility or liability, direct or consequential, for the information set out herein, including, without limitation, any projections, images, opinions, assumptions and estimates obtained from third parties. This information has not been verified by Capital, and Capital does not guarantee the accuracy, correctness and completeness of this information. The recipient of this information should take such steps as the recipient may deem necessary to verify the information in this document prior to placing any reliance upon it. The information may change and any property described in this document may be withdrawn from the market at any time without notice or obligation to the recipient from Capital.