

VALUE



PROPERTY
GROUP

FOR LEASE

10155 KING GEORGE BOULEVARD
SURREY, BC

MAJOR PRICE REDUCTION!!



AVAILABLE NOW!

Value Property Group
(604) 606-7016
leasing@valueindustries.com



SCAN ME

400 – 1245 W. Broadway
Vancouver, BC V6H 1G7
www.ValueGroupProperties.com

FOR LEASE

10155 King George Boulevard
Surrey, BC

OPPORTUNITY

A high exposure location on King George Boulevard. Nearby tenants include Staples, Dollarama, Canadian Tire, Toys R Us and more.

LOCATION

Located on King George Boulevard, near 102 Avenue, this unit is in a very busy location in the Surrey City Centre area. The property is located in Central City Mall and is a short walking distance from the SkyTrain station.

HIGHLIGHTS

- 7,184 square feet – 5,920 sq. ft. on main level, 1,264 sq. ft. in lower level
- 24 dedicated parking spots in front
- C-8 zoning (Community Commercial zoning)
- Available immediately

LEASE RATE

Please call for details.

TAXES & OPERATING COSTS (2026)

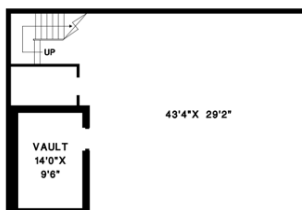
Common Area Maintenance: \$6.31/q. ft.*

Property Taxes: \$14.82/sq. ft.*

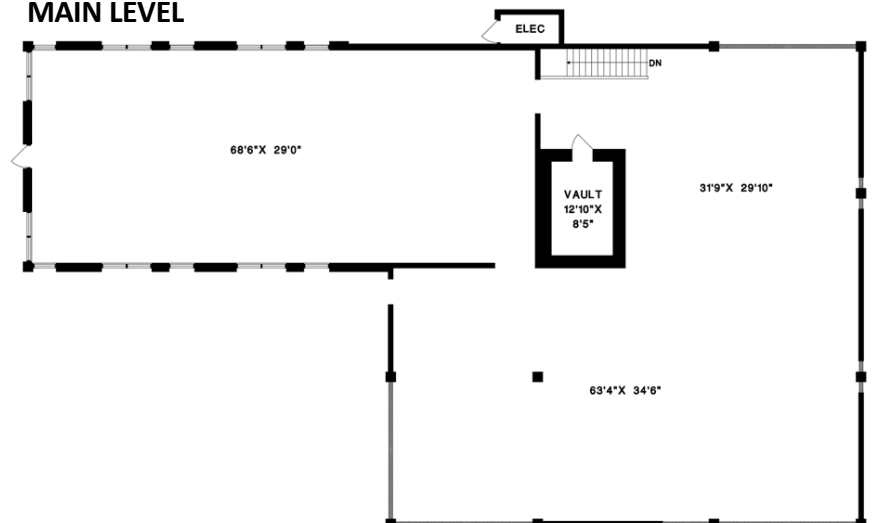
(*excludes management fee)



BASEMENT LEVEL



MAIN LEVEL



Note: The landlord has provided this information as a courtesy only and assumes no liability for its accuracy. All figures should be verified before relying on them. Rates subject to change.

Value Property Group
(604) 606-7016
leasing@valueindustries.com



SCAN ME

400 – 1245 W. Broadway
Vancouver, BC V6H 1G7
www.ValueGroupProperties.com