

# FOR LEASE

## BROADWAY CORRIDOR RETAIL OPPORTUNITY



1066 WEST BROADWAY

VANCOUVER, BC

**CBRE**





# THE DETAILS

## ZONING

C-3A Commercial

## AVAILABILITY

November 1, 2025

## AREA

918 sq. ft.

## NET RENT

\$65.00 per sq. ft.


## ADDITIONAL RENT


\$25.38 per sq. ft. (2025 est.)


## PARKING


1 stall


# UNIT FEATURES


- 

Generous ceiling heights and abundant natural light
- 

1 block from the future Oak-VGH Subway station
- 

1 secure parking stall available for rent
- 

Close proximity to Vancouver General Hospital, a key traffic anchor in the area
- 

Small office, private restroom, washer and dryer hookup in unit
- 

Exceptional exposure to over 39,000 vehicles per day

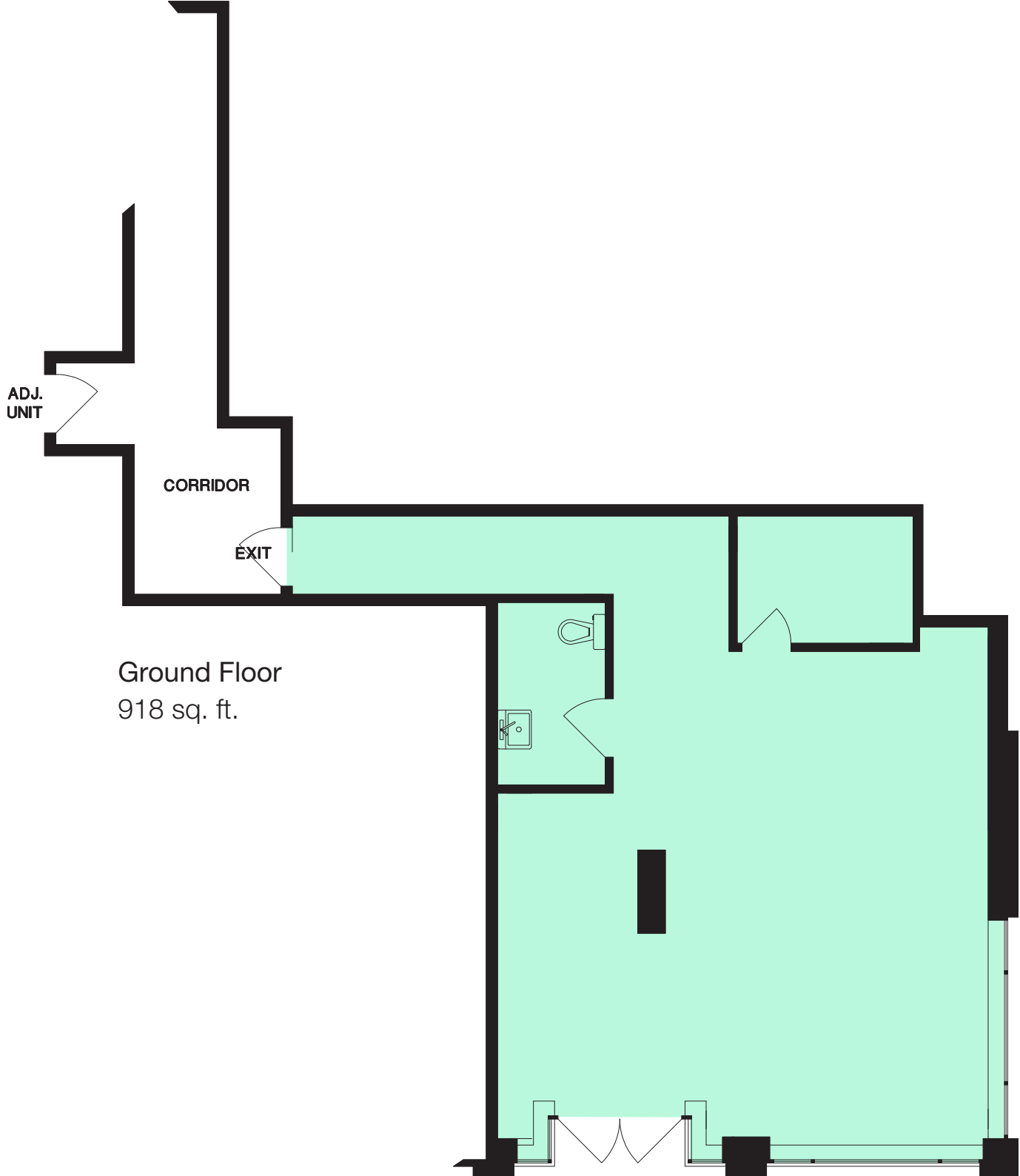
# EXCEPTIONAL RETAIL OPPORTUNITY ON VANCOUVER'S BROADWAY CORRIDOR.

Exciting opportunity to lease a well-located retail space in the heart of Vancouver's Fairview neighbourhood.

The opportunity comprises 918 square feet of ground floor commercial space just steps from the intersection of West Broadway and Oak Street. The unit features expansive glazing, exceptional frontage onto West Broadway, and a secure parking stall available for rent.







SUITE LAYOUT







# THE LOCATION

1066 West Broadway is located near the corner of West Broadway and Oak Street, providing an exceptional location in Vancouver’s Fairview neighbourhood. The available retail unit is just steps away from a vibrant collection of shops, professional services, cafes and restaurants, and is a short walk to Vancouver General Hospital, the largest hospital in British Columbia, spanning four city blocks.

SHOPPING

- 1 Shoppers Drug Mart
- 2 Broadway Camera
- 3 The Dance Shop
- 4 Broadway Liquor Store
- 5 Sleep Country Canada
- 6 Staples
- 7 Michaels
- 8 Whole Foods Market
- 9 London Drugs

BANKING

- 10 Scotiabank
- 11 CIBC
- 12 TD Canada Trust
- 13 RBC Royal Bank

FITNESS

- 14 F45 Training
- 15 Gold's Gym
- 16 Gymbox
- 17 GiR Fitness

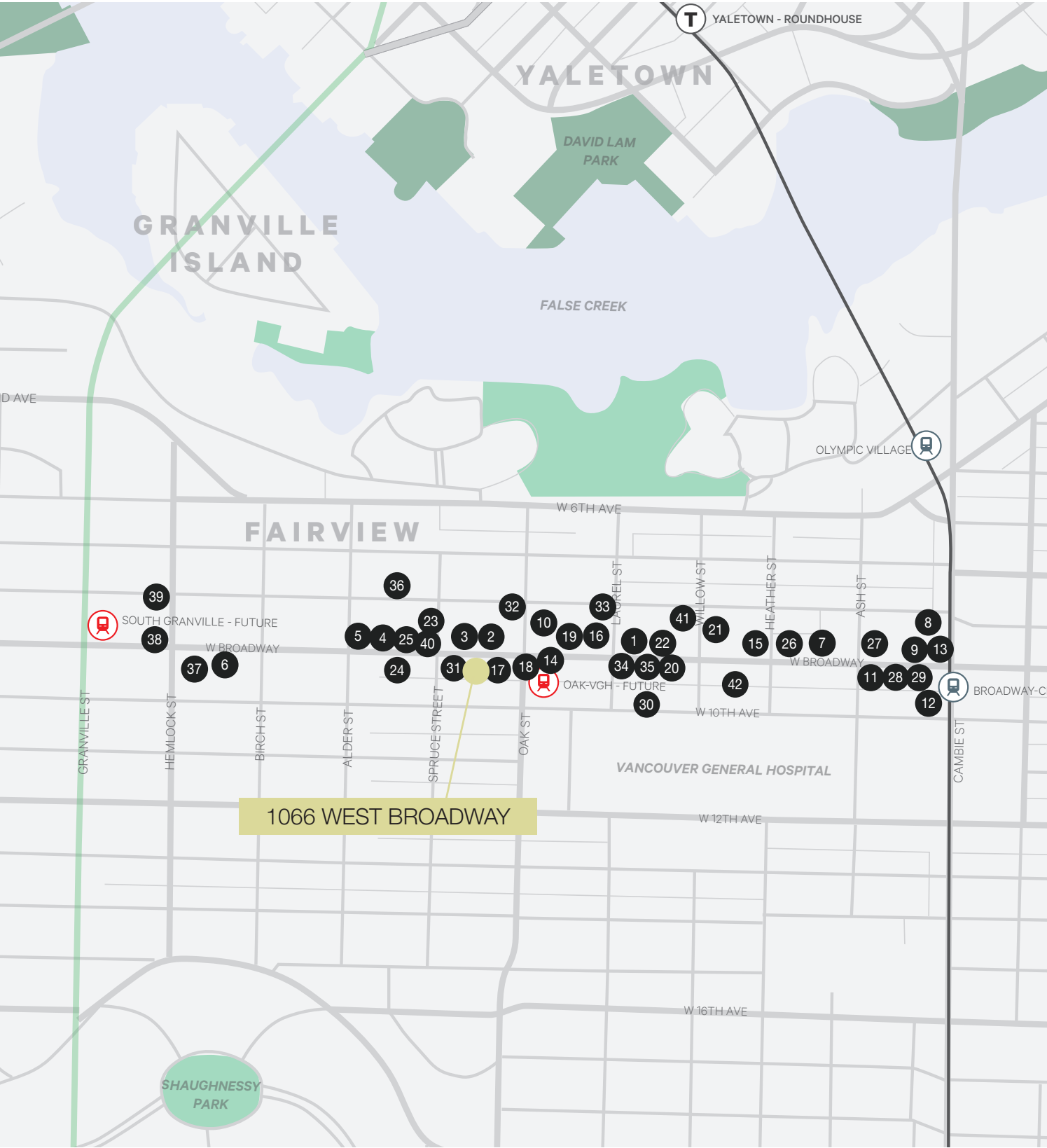
CAFES & RESTAURANTS

- 18 Dalina
- 19 Tozen Sushi Bar
- 20 Banana Leaf
- 21 Dynasty Seafood
- 22 Tim Hortons
- 23 Waves Coffee House
- 24 Salmon n' Bannock
- 25 Tojo's Restaurant
- 26 Blenz Coffee
- 27 Cactus Club Cafe
- 28 Saku Broadway
- 29 Yolks

PROFESSIONAL SERVICES

- 30 Lions Skin Care Centre
- 31 CUR Laser & Skin
- 32 Ocean Orthodontics
- 33 Elevate Hearing
- 34 Macdonald's Prescriptions
- 35 Vancouver Laser
- 36 The Den Wellness Collective
- 37 Birch Dental
- 38 Pacific Laser Eye Centre
- 39 Pacific Derm
- 40 Finlandia Pharmacy
- 41 Kiku Wellness
- 42 Pacific Massage Therapy Centre

The available unit is ideally located within walking distance of Vancouver General Hospital, several other medical providers, and a plethora of transit options in the neighbourhood, including Broadway-City Hall station located at the Cambie Street intersection, bringing high levels of vehicular and pedestrian traffic year-round.





# FOR LEASE

## BROADWAY CORRIDOR RETAIL OPPORTUNITY



## CONTACT

### Adrian Beruschi

PERSONAL REAL ESTATE CORPORATION

Senior Vice President, Retail

604 662 5138

[adrian.beruschi@cbre.com](mailto:adrian.beruschi@cbre.com)

### Ed Ferreira

PERSONAL REAL ESTATE CORPORATION

Senior Vice President,  
Advisory & Transaction Services

604 662 5122

[ed.ferreira@cbre.com](mailto:ed.ferreira@cbre.com)

### Chloe Hamelin

Associate, Retail

604 662 5166

[chloe.hamelin@cbre.com](mailto:chloe.hamelin@cbre.com)

## CBRE

CBRE Limited | 1021 West Hastings Street | #2500 | Vancouver, BC V6E 0C3 | [www.cbre.ca](http://www.cbre.ca)

This disclaimer shall apply to CBRE Limited, Real Estate Brokerage, and to all other divisions of the Corporation; to include all employees and independent contractors ("CBRE"). The information set out herein, including, without limitation, any projections, images, opinions, assumptions and estimates obtained from third parties (the "Information") has not been verified by CBRE, and CBRE does not represent, warrant or guarantee the accuracy, correctness and completeness of the Information. CBRE does not accept or assume any responsibility or liability, direct or consequential, for the Information or the recipient's reliance upon the Information. The recipient of the Information should take such steps as the recipient may deem necessary to verify the Information prior to placing any reliance upon the Information. The Information may change and any property described in the Information may be withdrawn from the market at any time without notice or obligation to the recipient from CBRE. CBRE and the CBRE logo are the service marks of CBRE Limited and/or its affiliated or related companies in other countries. All other marks displayed on this document are the property of their respective owners. All Rights Reserved.

Mapping Sources: Canadian Mapping Services [canadamapping@cbre.com](mailto:canadamapping@cbre.com); DMTI Spatial, EnviroNics Analytics, Microsoft Bing, Google Earth.