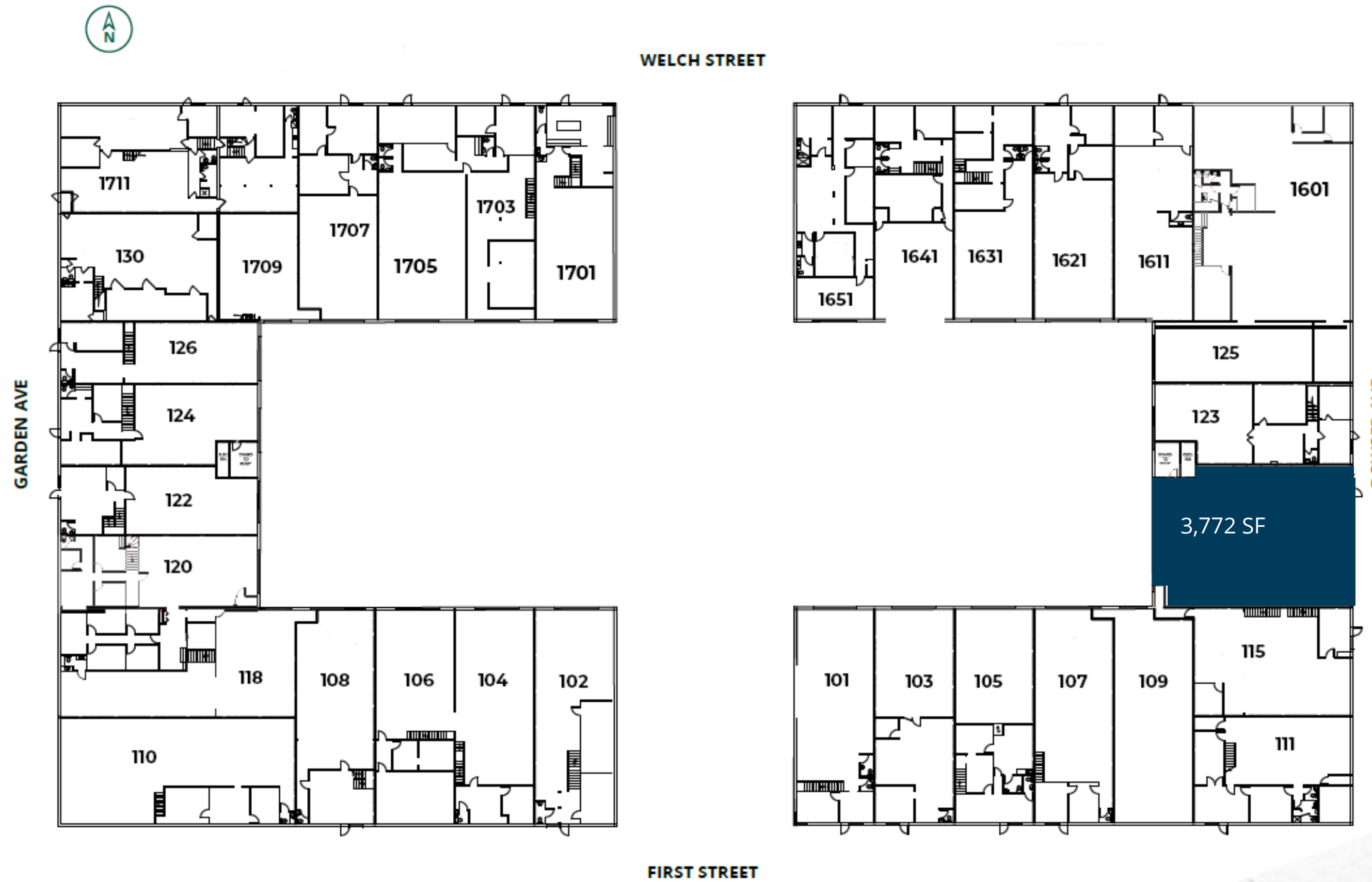


# Lions Gate Business Park

102-140 Garden Ave, 1601-1723 Welch Street, 101-139 Bowser Ave, North Vancouver, B.C.



Unit #	Sq.ft.	Tenant Name
1651 Welch	2,355	CSN Pharma
1641 Welch	2,367	CSN Pharma
1631 Welch	2,357	Suspension Werx
1621 Welch	2,322	Blue Grouse Wine Cellars
1611 Welch	2,394	Samel Discovery
1601 Welch	4,696	1508047 BC Ltd.
125 Bowser	1,674	Street Tint Legal
123 Bowser	2,063	Tidey Lock & Key
121 Bowser	3,772	Available
115 Bowser	2,443	Bodyco Fitness
111 Bowser	2,345	Gravity Construction
109 Bowser	2,335	KC Welding & Design
107 Bowser	2,330	Granola King
105 Bowser	2,360	Strength Connected Fitness
103 Bowser	2,367	Penometal Design
101 Bowser	2,350	30-Minute Hit
1701 Welch	2,362	Planet Studio
1703 Welch	4,692	Project X Counter
1707 Welch	2,331	Grab & Go
1709 Welch	2,390	Cypress Railings & Gates
1711 Welch	2,325	RK4 Development
130 Garden	2,427	Masa's Salmon Smoke House
126 Garden	1,609	Worley Canada
124 Garden	2,055	Medna Medical
122 Garden	1,828	Envision Improvements
120 Garden	1,959	CSN
118 Garden	3,584	Great Canadian Landscaping
110 Garden	3,528	Carlos Ornamental
108 Garden	2,308	H&H Insulation
106 Garden	2,365	West Coast-Off Roaders
104 Garden	2,360	West Coast-Off Roaders
102 Garden	2,358	A Moveable Feast Catering



Peter Jenkins  
 peter.jenkins@gwlra.com  
 604-713-8920

■ AVAILABLE