

FOR LEASE

**8845 176 Street**

Surrey, BC

---

Barn for Lease on Beautiful Farm Property.



**Razi Mohamed**

Vice President  
Personal Real Estate Corporation  
778.879.9407

[Razi.Mohamed@macdonaldcommercial.com](mailto:Razi.Mohamed@macdonaldcommercial.com)

**Jas Chhina**

Associate  
Personal Real Estate Corporation  
778.881.1349

[Jas.Chhina@macdonaldcommercial.com](mailto:Jas.Chhina@macdonaldcommercial.com)

**Macdonald**  
COMMERCIAL

member of  
**CORFAC**  
INTERNATIONAL



# 8845 176 STREET

Surrey, BC

## SALIENT DETAILS

### ADDRESS

8845 176 Street, Surrey, BC V4N 6H9

### SIZE

7,000 sq. ft.

### DIMENSIONS

70x100 ft.

### CEILING HEIGHT

26 ft.

### CONSTRUCTION

Steel Frame

### STORAGE

Concrete floor base can support heavy storage equipment

### ACCESS

Access from 88 Ave and farm road access from Hwy 15

### ADDITIONAL AMENITIES

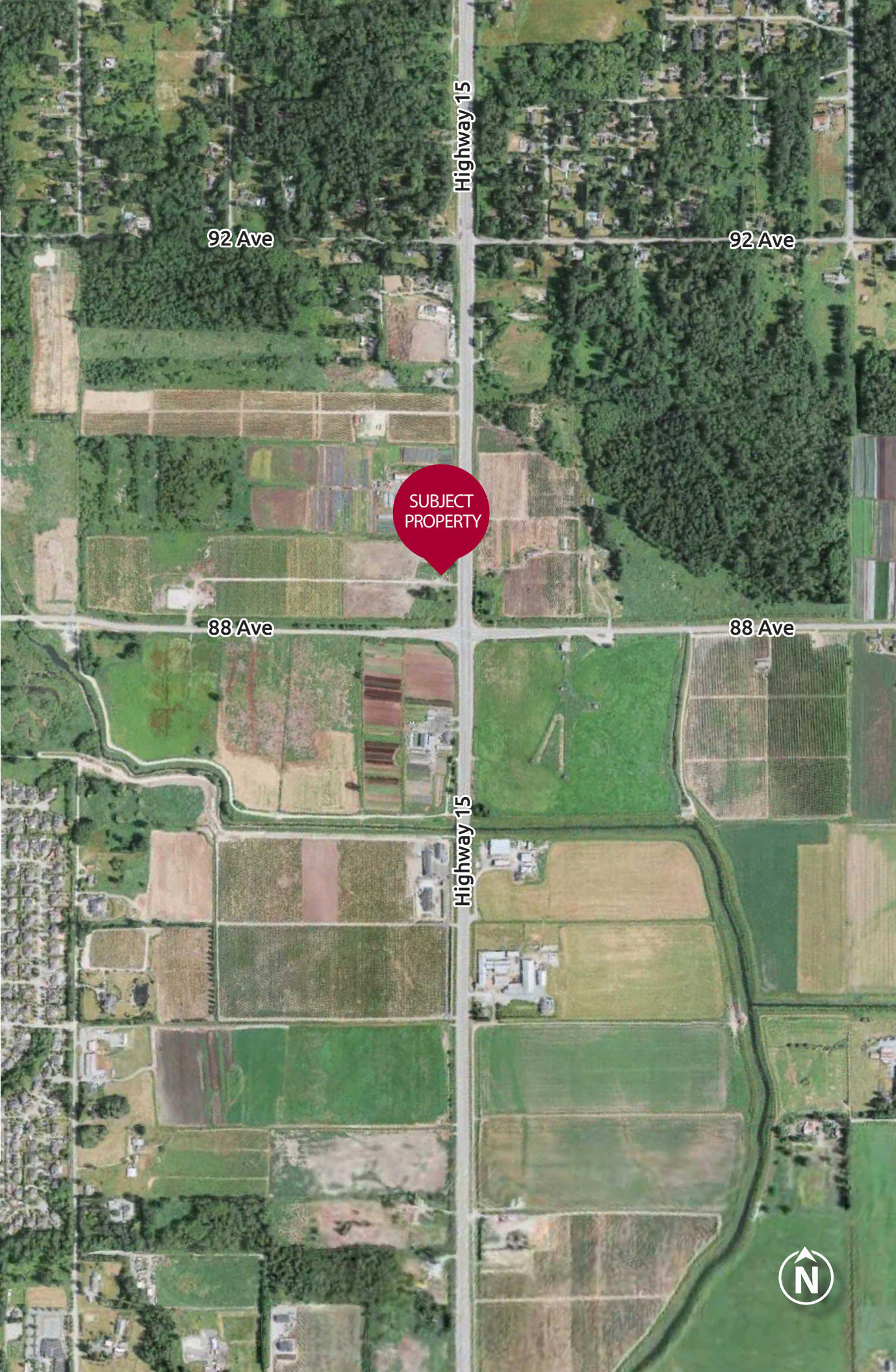
Fenced secured site, reasonable amendmets or modifications to the premises based on tenants operational requirement.

## OVERVIEW

We are excited to offer a unique leasing opportunity for a spacious and well-equipped barn on a scenic farm property. This brand-new construction versatile barn is ideal for a variety of uses, including agricultural operations, equipment storage, livestock housing, or hobby farming.

## HIGHLIGHTS

- » **Flexible Use:** Ideal for agricultural, equestrian, storage, or hobby use.
- » **Ready-to-Use:** Fully equipped and prepared to meet your needs from day one.
- » **Great Location:** Proximity to Hwy 1 Hwy 10
- » **Secure and Private:** Situated on a private farm property with secure access.







### Razi Mohamed

Vice President  
Personal Real Estate Corporation  
778.879.9407

[Razi.Mohamed@macdonaldcommercial.com](mailto:Razi.Mohamed@macdonaldcommercial.com)

### Jas Chhina

Associate  
Personal Real Estate Corporation  
778.881.1349

[Jas.Chhina@macdonaldcommercial.com](mailto:Jas.Chhina@macdonaldcommercial.com)

**Macdonald**  
**COMMERCIAL**

member of  
**CORFAC**  
INTERNATIONAL