

QU  
BE



Small-Bay Warehouse Space- For Lease

**1441 Stittsville Main Street**

OTTAWA, ONTARIO

# 1441 Stittsville Main Street- For Lease

## LEASE DETAILS

Unit	Size (SF)	Availability	Loading	Base Rent (PSF)	Additional Rent (PSF)
1	1,200	30 Day Notice	1 x grade level door	\$20.00	\$10.04 (2026)
3	2,400	30 Day Notice	1 x oversized grade level door	\$20.00	\$10.04 (2026)

## HIGHLIGHTS

- Rare **small-bay warehouse** units available in the heart of Stittsville, on Stittsville Main Street.
- Units ranging from approx. 1,200 SF to 2,400 SF with functional industrial layouts
- Features include **oversized grade-level doors** and **~15' clear ceiling heights**
- Each unit includes a **private washroom** and efficient shipping/receiving capability
- **Ample on-site parking** with space for fleet vehicles, trucks, and potential container storage

**BEN SHERMAN**  
BROKER  
(613) 513 4759  
[ben@qubeproperties.com](mailto:ben@qubeproperties.com)

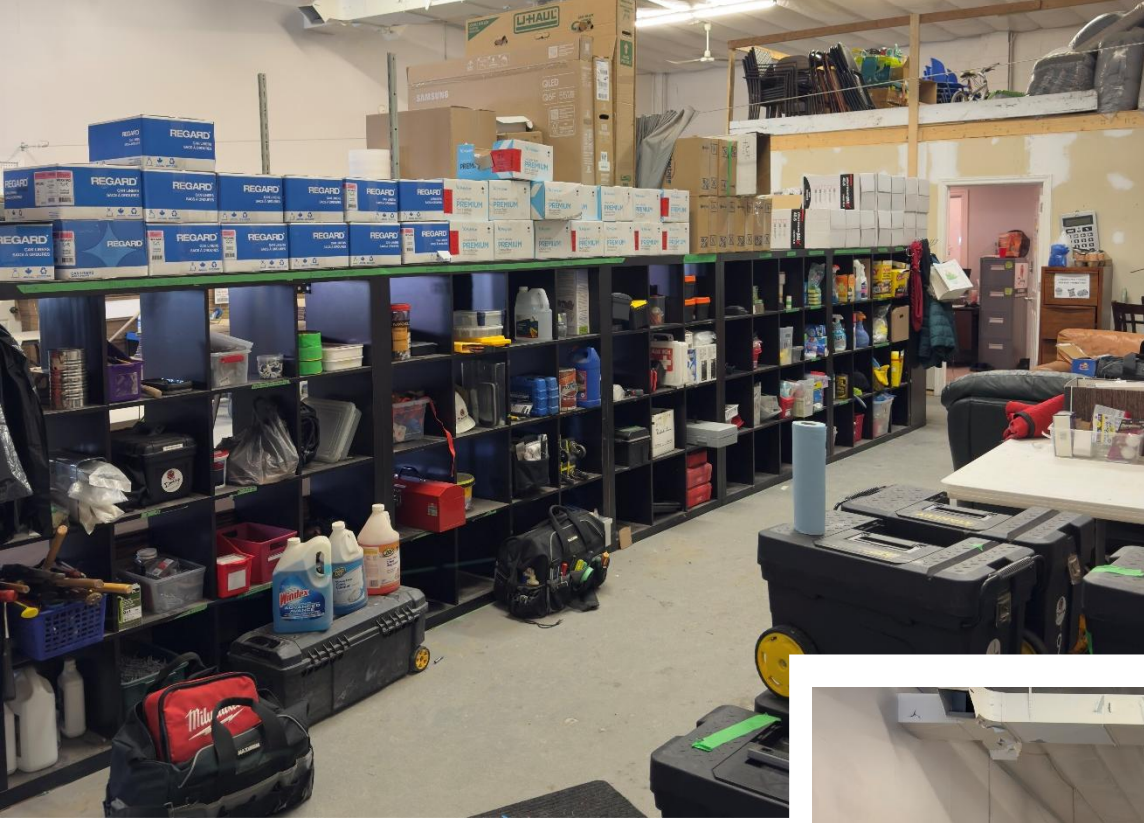
**SAMIZ SUNESARA**  
SALES REPRESENTATIVE  
(613) 413 2178  
[samiz@qubeproperties.com](mailto:samiz@qubeproperties.com)

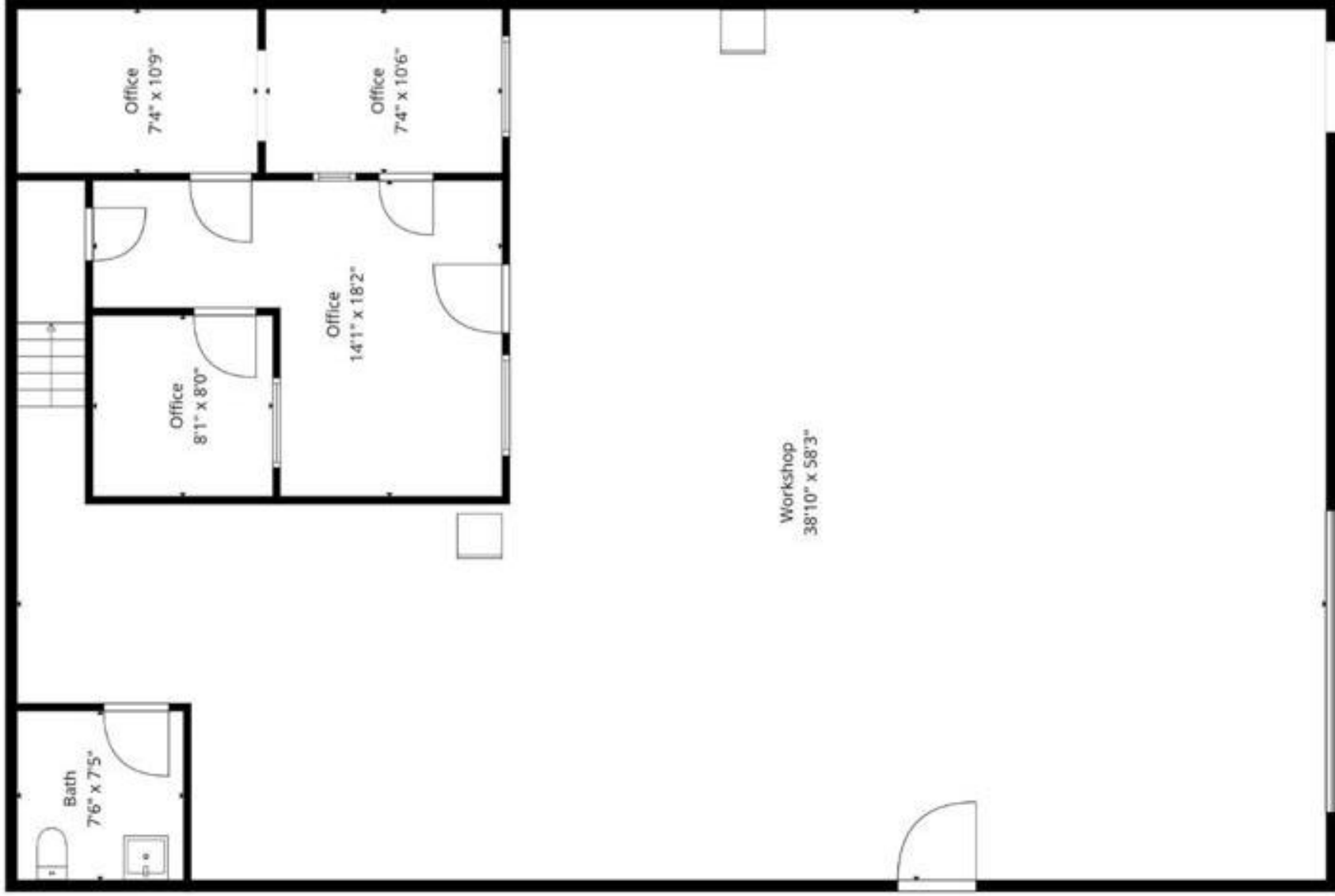
**QUBE PROPERTIES LTD.**  
REAL ESTATE BROKERAGE  
255 MICHAEL COWPLAND DRIVE  
OTTAWA ON K2M 0M5

**QU  
BE**

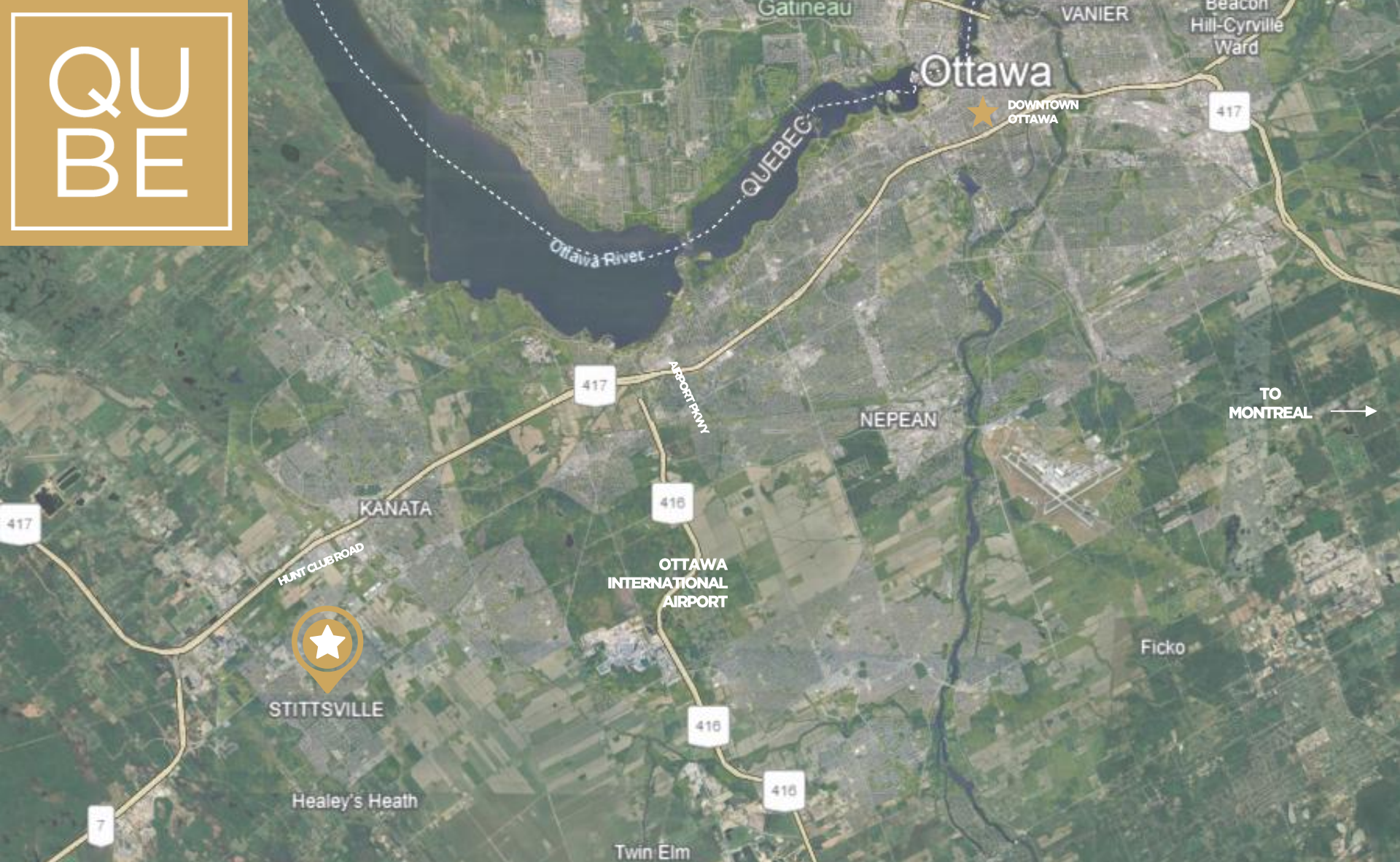








QU  
BE



**BEN SHERMAN**  
BROKER  
(613) 513 4759  
[ben@qubeproperties.com](mailto:ben@qubeproperties.com)

**SAMIZ SUNESARA**  
SALES REPRESENTATIVE  
(613) 413 2178  
[samiz@qubeproperties.com](mailto:samiz@qubeproperties.com)

**QUBE PROPERTIES LTD.**  
REAL ESTATE BROKERAGE  
255 MICHAEL COWPLAND DRIVE  
OTTAWA ON K2M 0M5

QU  
BE

This disclaimer shall apply to Qube Properties Ltd, Real Estate Brokerage, and to all other divisions of the Corporation; to include all employees and independent contractors ("Qube"). The information set out herein, including, without limitation, any projections, images, opinions, assumptions and estimates obtained from third parties (the "Information") has not been verified by Qube, and Qube does not represent, warrant or guarantee the accuracy, correctness and completeness of the Information. Qube does not accept or assume any responsibility or liability, direct or consequential, for the Information or the recipient's reliance upon the Information. The recipient of the Information should take such steps as the recipient may deem necessary to verify the Information prior to placing any reliance upon the Information.