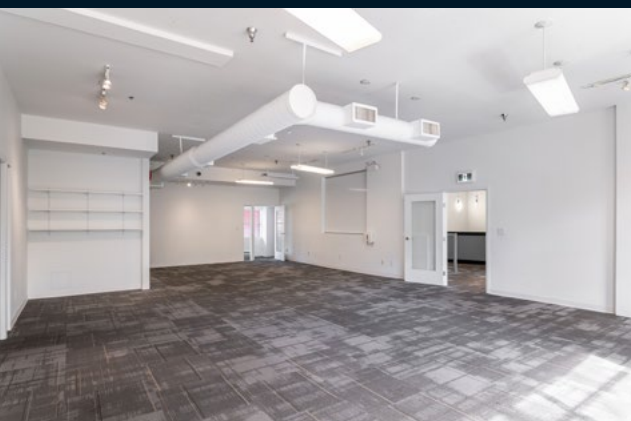


# For Lease

## Yaletown Mews

1035 Cambie Street  
Vancouver, BC

*Zoned for early learning & educational uses*



 **JLL** SEE A BRIGHTER WAY

### THE LOCATION

Yaletown Mews is centrally located at the corner of Cambie Street and Nelson Street in the popular and upbeat Yaletown district within the downtown core of the City of Vancouver. Building signage opportunity available.

The building is two blocks from the Yaletown Roundhouse Canada Line Station which reaches destinations of Richmond and the YVR Airport within twenty minutes.



**100**  
Rider's Paradise



**92**  
Very Bikeable



**77**  
Walker's Paradise

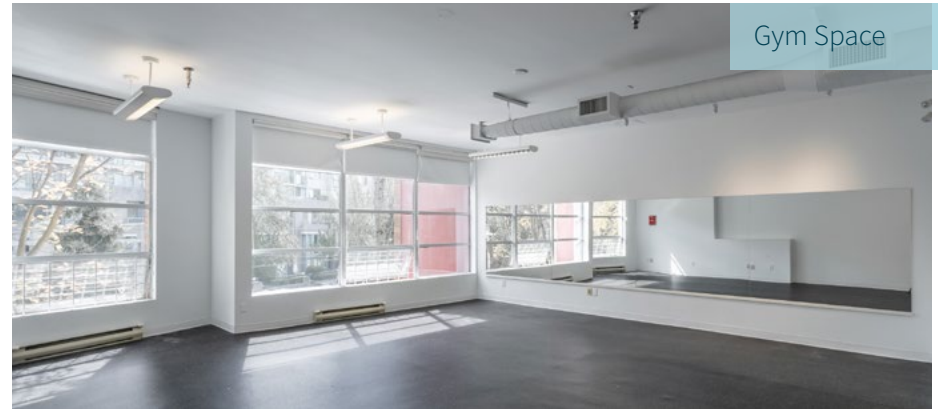




Natural Light



Gym Space



Meeting Room



Open Area



Kitchen



Washroom



# NEARBY AMENITIES

## Wellness


1. David Lam Park
2. YVR Cycle Spin Studio
3. Skoah Yaletown
4. Emery Barnes Park
5. YOGA
6. Seawall
7. Kondi Fitness


## Food and Fun

8. Earls Kitchen + Bar
9. Cactus Club Cafe
10. The Parlour
11. Yaletown Brew Pub
12. The Flying Pig
13. The Keg Steakhouse + Bar

## Necessities

14. Urban Fare
15. Choices Market
16. Nesters Food Market
17. Shoppers Drug Mart

 Expo Line

 Canada Line



**Andrew Astles**  
Associate Vice President  
+1 604 363 6673  
andrew.astles@jll.com

**Mark Trepp\***  
Executive Vice President  
+1 604 998 6035  
mark.trepp@jll.com

 **JLL** SEE A BRIGHTER WAY