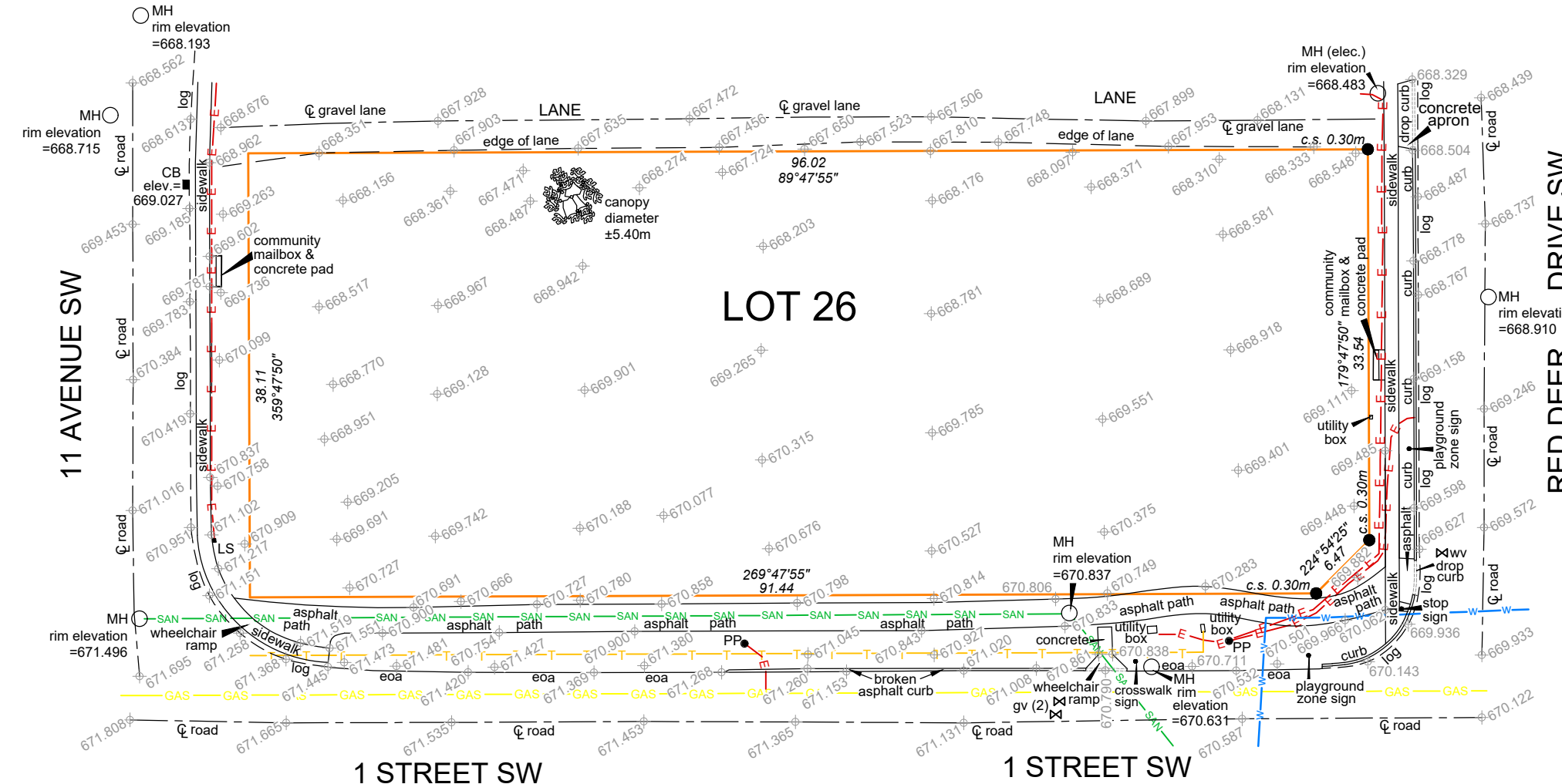
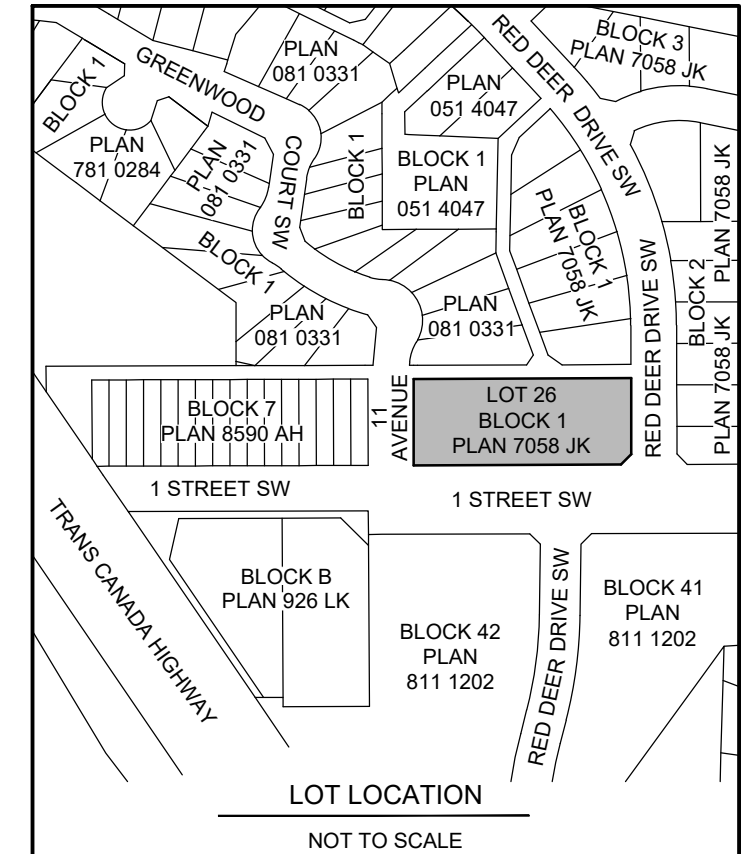


#1064 - 1 STREET SW LOT 26, BLOCK 1, PLAN 7058 JK



MU DISTRICT SITE PLAN

SCALE 1:500

NOTE:
THIS PLAN DETAILS INFORMATION AVAILABLE AT THE TIME OF SURVEY.
THE LOCATION OF UNDERGROUND UTILITIES SHOWN ON THIS PLAN ARE TAKEN FROM FIELD LOCATES PERFORMED BY BENCHMARK GEOMATICS INC. AND DRAWINGS PROVIDED BY THE CITY OF MEDICINE HAT.
BENCHMARK GEOMATICS INC. AND ITS EMPLOYEES DO NOT TAKE RESPONSIBILITY FOR THE LOCATION OF UNDERGROUND CONDUITS, PIPES OR OTHER FACILITIES WHETHER SHOWN OR OMITTED ON THIS PLAN. ALL UNDERGROUND INSTALLATIONS SHOULD BE VERIFIED BY THE RESPECTIVE AUTHORITIES PRIOR TO CONSTRUCTION.

LEGEND:

- | | | | |
|-------|-----------------|-----|---------------|
| EOA | EDGE OF ASPHALT | LOG | LIP OF GUTTER |
| ☉ | CENTRELINE | SAN | SANITARY LINE |
| — | SITE LIMITS | GAS | GAS LINE |
| —W— | WATER LINE | ●PP | POWER POLE |
| —E—E— | ELECTRICAL LINE | ⊗gv | GAS VALVE |
| —T—T— | TELUS LINE | | |
| ⊗WV | WATER VALVE | | |
| 🌳 | TREE | | |

NOTES:
1. FOR SETBACK INFORMATION PLEASE REFER TO THE CITY OF MEDICINE HAT LAND USE BYLAW.