

For Sale: 12005 238B Street, Maple Ridge

High-Potential Asset with In-Place Income and Future Redevelopment Upside



CONTACT INFORMATION

ELY GOLVIN | Personal Real Estate Corporation | Associate Vice President | Direct: +1 604 640 5809 | Mobile: +1 778 991 0278 | ely.golvin@cushwake.com

SUMIR CHAUHAN | Personal Real Estate Corporation | Commercial Real Estate Broker | Direct: +1 604 725 5977 | info@sumirchauhan.com





THE OFFERING

Cushman & Wakefield ULC is pleased to present the opportunity to acquire a well-located, medical-oriented community commercial asset at 12005 238B Street, Maple Ridge, British Columbia.

Constructed in 2007, the property comprises 6,523 square feet of leasable area and is currently 83% occupied by a roster of medical and healthcare professionals. The tenancy benefits from steady demand driven by the surrounding, rapidly growing residential neighbourhood and its close proximity to Ridge Meadows Hospital.

The property is zoned C-2 (Community Commercial), permitting broad range of commercial, professional, and community-oriented uses, supporting long-term tenant demand and asset flexibility. It also provides stable in-place income with defensive characteristics, complemented by longer term redevelopment potential. This combination presents investors with an attractive opportunity to acquire a resilient income producing asset with future value enhancement potential within the expanding Fraser Valley market.

INVESTMENT HIGHLIGHTS



Medical-Focused Tenant Profile

Currently leased to medical and healthcare professionals, benefiting from consistent, needs-based demand generated by a growing residential population and proximity to Ridge Meadows Hospital.



Stabilized Income with Upside

With 83% occupancy, the asset delivers stable in-place income, with near-term upside through the lease-up of remaining vacancy and continued rental growth within a supply-constrained medical market.



Rental Growth through Triple Net Leasing Structure

Leases are structured on a triple net basis, providing rental growth potential while minimizing landlord exposure to operating expenses.



Strategic Community Commercial Zoning (C-2)

Flexible C-2 zoning supports a broad range of commercial, professional, and community-oriented uses, enhancing tenant demand and long-term asset flexibility.



Redevelopment Potential

Well-positioned for future redevelopment, offering a compelling long-term value-enhancement opportunity within a rapidly evolving Fraser Valley corridor.



Professional Management in Place

Management fee of approximately 7.43% of annual base rent, supporting efficient day to day operations.



PROPERTY SUMMARY

12005 238B Street, Maple Ridge	
PIDs	026-546-914
Legal Description	Lot B Section 21 Township 12 New Westminster District Plan BCP21769
Leasable Area	6,523 SF
Year Built	2007
Zoning	C-2 - Community Commercial
Occupancy	83% occupied
Net Operating Income	Contact Listing Agent*
Asking Price	Contact Listing Agent

*Additional information is available upon receiving a signed Confidentiality Agreement.

DEMOGRAPHICS

	1km	3km	Maple Ridge
Population	5,297	38,811	90,990
Median Age	39	42	41
Average Household Income	\$123,544	\$115,338	\$118,900
Labour Force Participation	65%	63%	63%

 **WALK SCORE**
64

 **TRANSIT SCORE**
41

 **BIKE SCORE**
57



LOCATION OVERVIEW

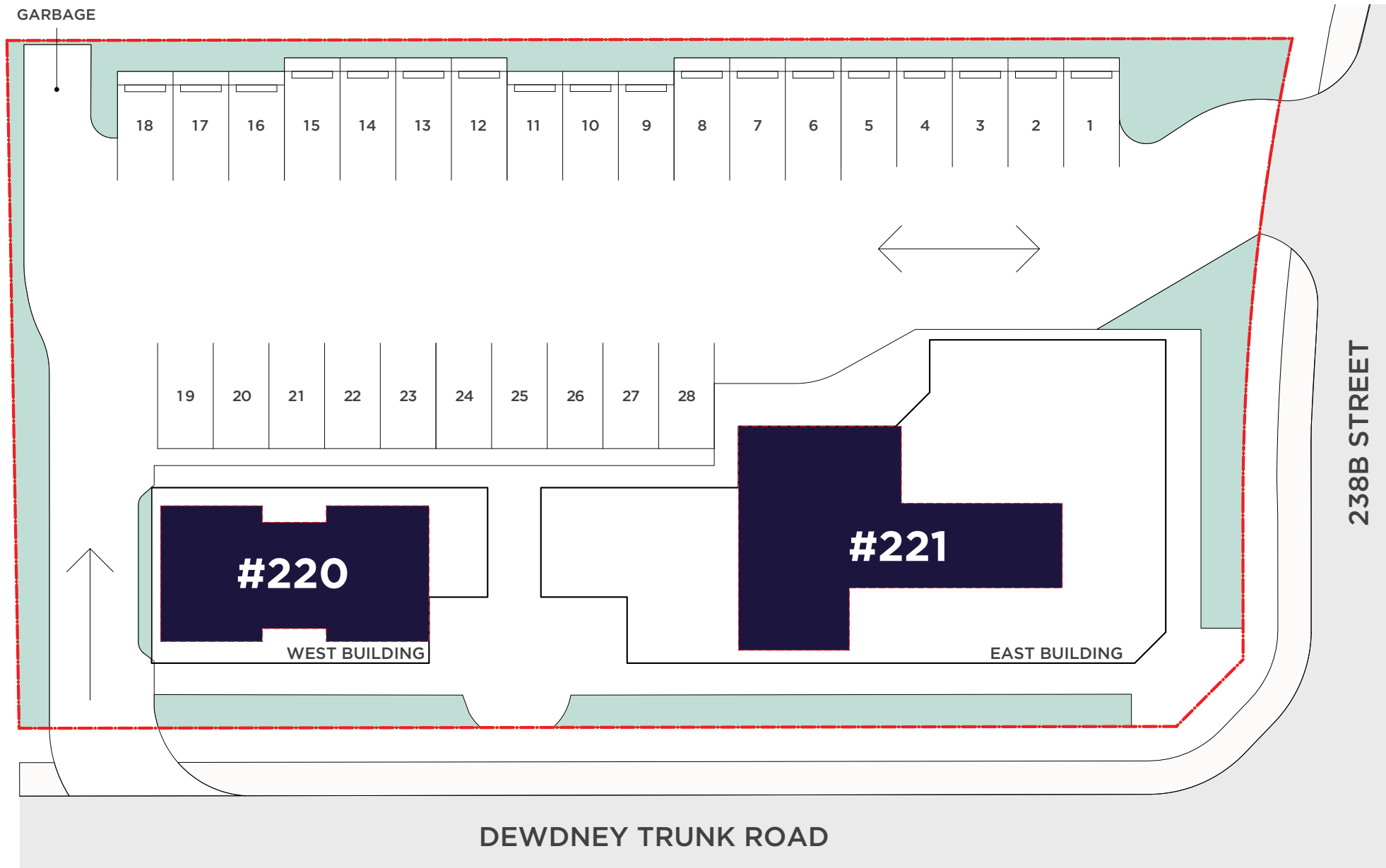
Located in the heart of Maple Ridge, the property benefits from a well-established and rapidly growing residential community, supporting strong demand for essential services, including healthcare.

The asset is situated in close proximity to Ridge Meadows Hospital, a key regional healthcare facility that anchors medical demand and supports a network of complementary providers.

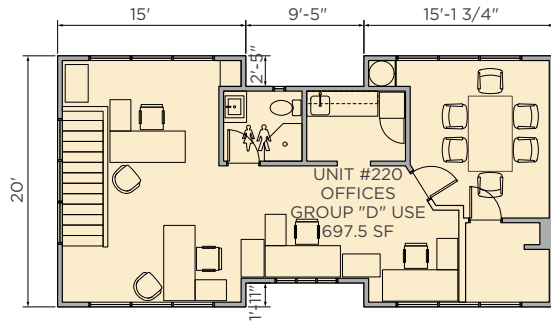
Convenient access to Lougheed Highway, Golden Ears Bridge, and West Coast Express, providing efficient connectivity to Vancouver, Surrey, Langley, and surrounding communities. Continued population growth and limited commercial supply position the area as an attractive market for long-term investment.



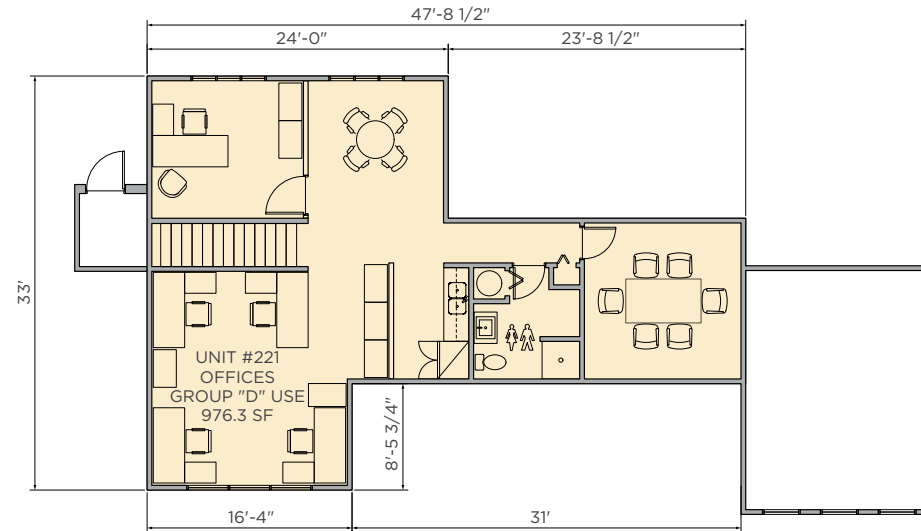
PROPERTY LAYOUT PLAN



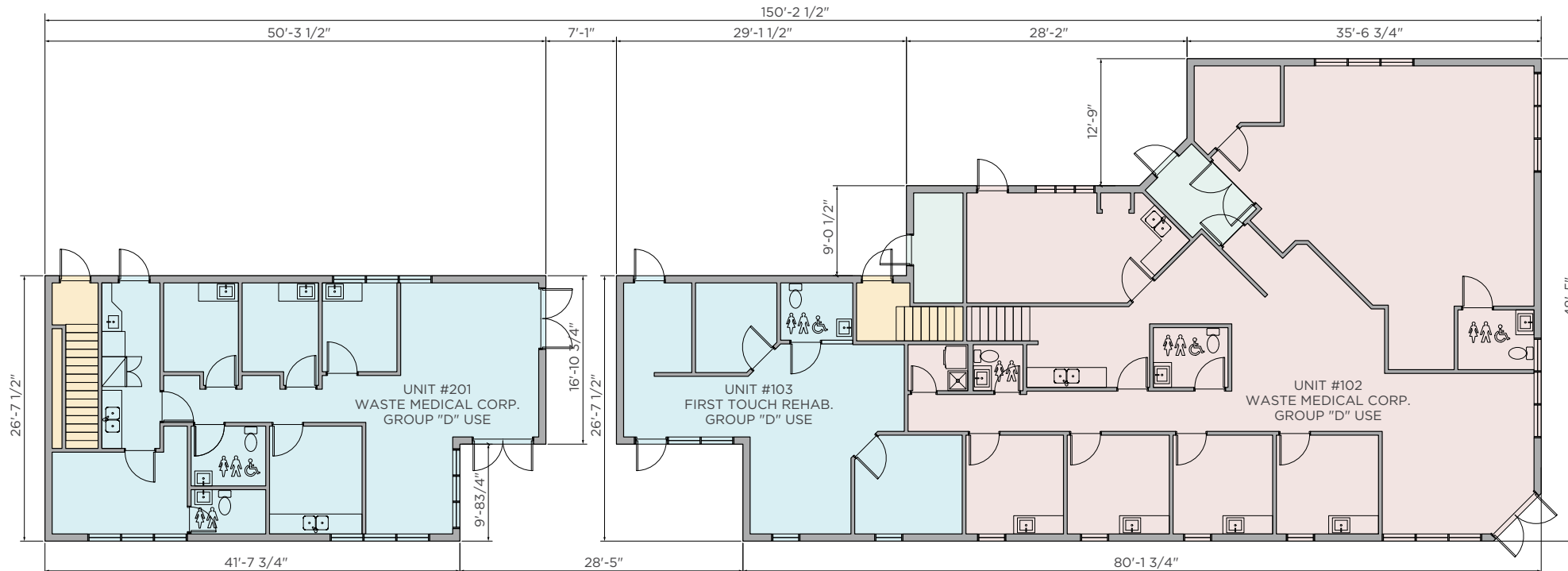
FLOOR PLANS



#220 - SECOND FLOOR PLAN



#221 - SECOND FLOOR PLAN



#220 - GROUND FLOOR

#221 - GROUND FLOOR





CONTACT INFORMATION

ELY GOLVIN
Personal Real Estate Corporation
Associate Vice President
Direct: +1 604 640 5809
Mobile: +1 778 991 0278
ely.golvin@cushwake.com

SUMIR CHAUHAN
Personal Real Estate Corporation
Commercial Real Estate Broker
Direct: +1 604 725 5977
info@sumirchauhan.com

©2026 Cushman & Wakefield. All rights reserved. The information contained in this communication is strictly confidential. This information has been obtained from sources believed to be reliable but has not been verified. NO WARRANTY OR REPRESENTATION, EXPRESS OR IMPLIED, IS MADE AS TO THE CONDITION OF THE PROPERTY (OR PROPERTIES) REFERENCED HEREIN OR AS TO THE ACCURACY OR COMPLETENESS OF THE INFORMATION CONTAINED HEREIN, AND SAME IS SUBMITTED SUBJECT TO ERRORS, OMISSIONS, CHANGE OF PRICE, RENTAL OR OTHER CONDITIONS, WITHDRAWAL WITHOUT NOTICE, AND TO ANY SPECIAL LISTING CONDITIONS IMPOSED BY THE PROPERTY OWNER(S). ANY PROJECTIONS, OPINIONS OR ESTIMATES ARE SUBJECT TO UNCERTAINTY AND DO NOT SIGNIFY CURRENT OR FUTURE PROPERTY PERFORMANCE. PD-204739-V4

