



For Sublease

1050 Alberni Street

20,165 SF total — Full-block lease or floor-by-floor basis
Premier education campus available in the heart of the
Alberni Street corridor

Lennard:

520-800 West Pender Street, Vancouver
604.636.2620

lennard.com

Property Details

1050 Alberni Street

The Opportunity

Premier downtown Vancouver education campus in the heart of the Alberni Street corridor with approximately 20,000 SF total — available as a full-block lease or on a floor-by-floor basis. 1050 Alberni Street is a multi-floor campus configuration with a standout rooftop garden/patio on the 5th floor. Campus includes classrooms across multiple floors, administrative offices, and an on-site restaurant/café component with a Modern classroom buildout that includes high-speed internet, device power stations, and HD screens. Rooftop patio programmed for student use and events (BBQs, activities, etc.)

Property Highlight

- Steps to major transit: walk to Burrard Station and Vancouver City Centre Station
- Amenity-rich location: 10+ bus stops, 15+ coffee shops, 20+ retail shops, 30+ restaurants nearby
- Surrounded by premier hotels (per CCEL): Fairmont Hotel Vancouver, Shangri-La, Hyatt Regency, Paradox Hotel Vancouver
- Located among luxury retail (per CCEL): Tiffany & Co., Hermès, PRADA, Gucci, Louis Vuitton
- Strong student-friendly retail mix nearby (per CCEL): Roots, Lululemon, Aritzia, Canada Goose, Arc'teryx
- Daycare Potential



Total Available Space*
20,165 SF

Unit 200	Unit 300	Unit 400-410	Penthouse
6,565 SF	6,565 SF	6,409 SF	626 SF

*Sublet available for the entire block or on a floor by floor basis.



Expiry Date
December 31st, 2032

Availability
October 2026



Asking Rent
Please Contact Listing Agent

Additional Rent (2026 est)
\$31.20 PSF



Listing Agent
Aaron Ulinder
Personal Real Estate Corporation
Partner & Executive Vice President
C. 604.614.3455
aulinder@lennard.com



Local Map

1050 Alberni Street

Prime Location

Ideally positioned in West End Vancouver, 1050 Alberni Street offers unparalleled access to Vancouver's premier amenities and transit. Steps away from world-class dining at Din Tai Fung, Joe Fortes, and Il Nido, with quick lunch options like Mr. Shawarma and Hello Nori nearby.

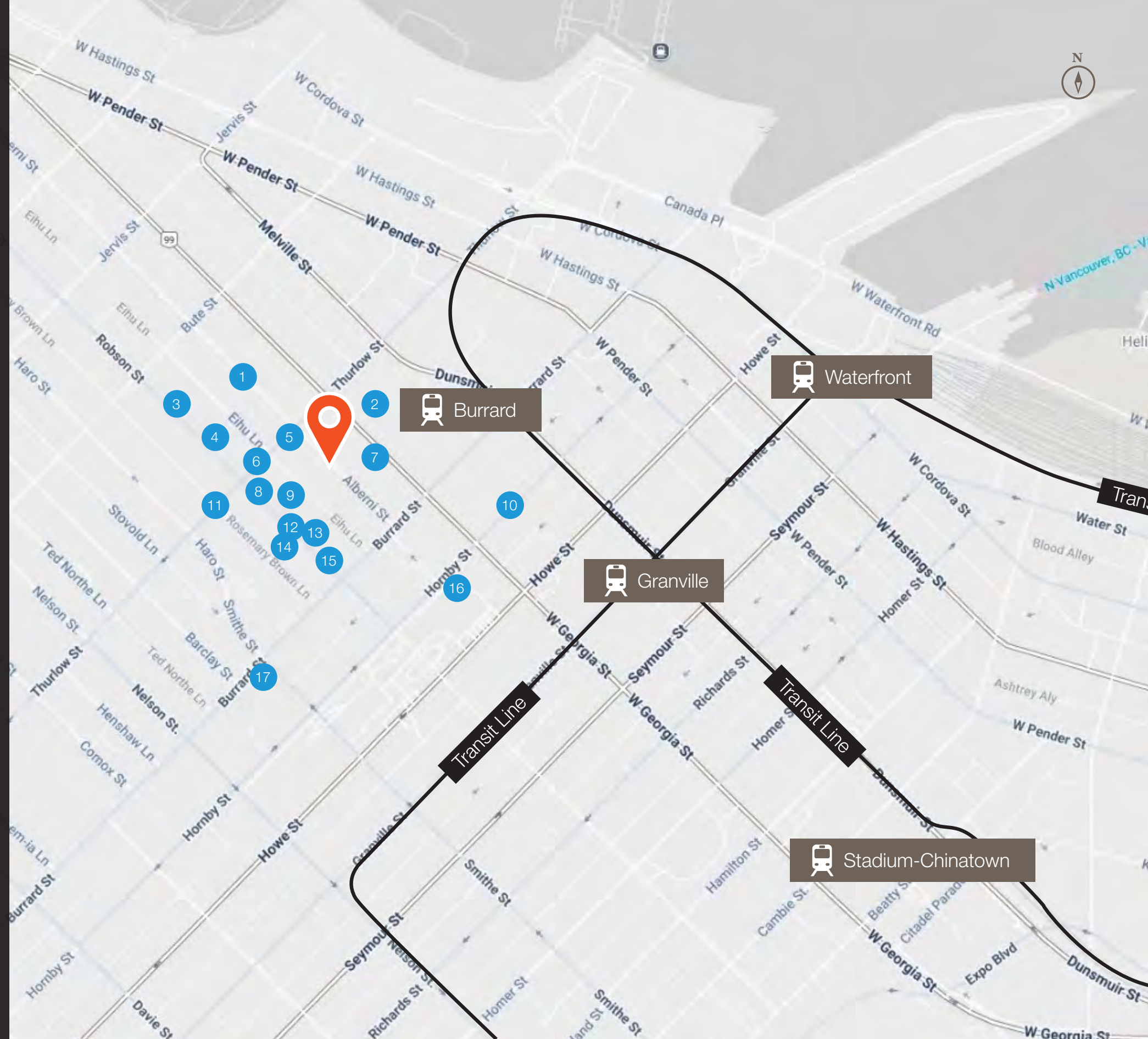
The area serves as a vibrant retail and cultural hub, home to flagship stores like MUJI, Zara, and the Rolex Boutique, alongside local staples like Thierry and Indigo.

With the Vancouver Art Gallery, Scotiabank Theatre, and Burrard Station just around the corner, this location provides a perfect balance of professional prestige and urban convenience in the heart of the West End.

Local Amenities

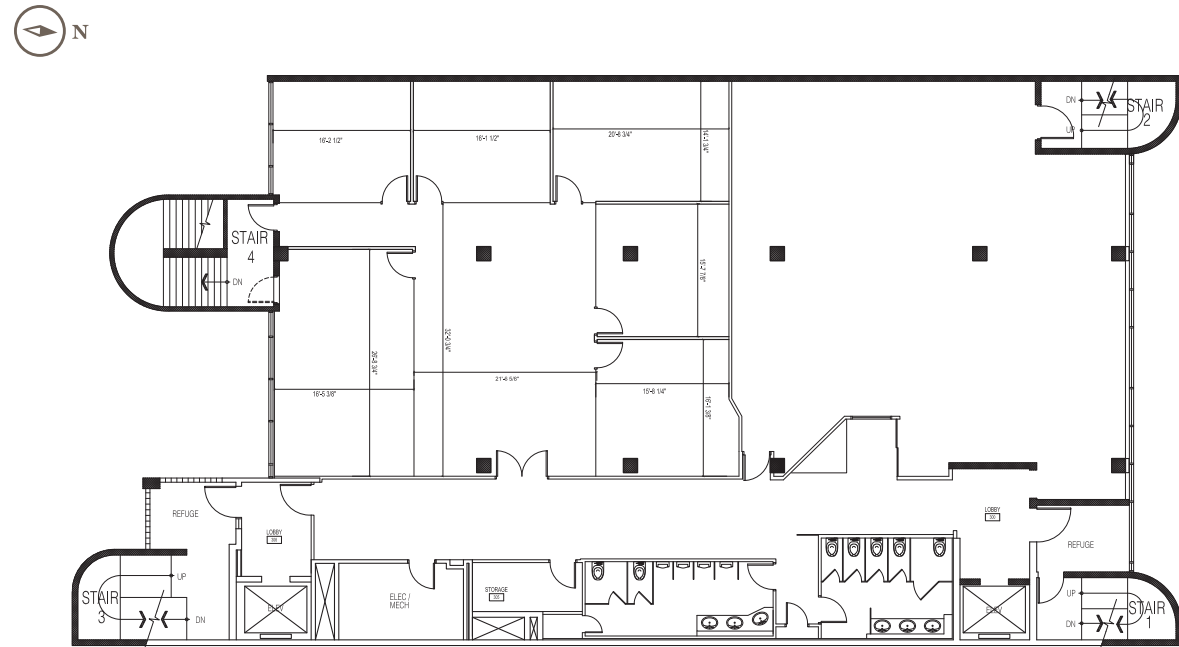
- 1 Din Tai Fung
- 2 Mr. Shawarma Georgia location
- 3 Hello Nori - Robson
- 4 MUJI Robson Street
- 5 Rolex Boutique Global Watch Company
- 7 Joe Fortes Seafood & Chop House
- 6 Thierry Alberni
- 8 Starbucks
- 9 Il Nido Italian Restaurant
- 11 Bill Reid Gallery of Northwest Coast Art
- 10 Red Robin Gourmet Burgers and Brews
- 12 Foot Locker
- 13 SEPHORA
- 14 Zara
- 15 Indigo
- 16 Vancouver Art Gallery
- 17 Scotiabank Theatre Vancouver

 Subject Property

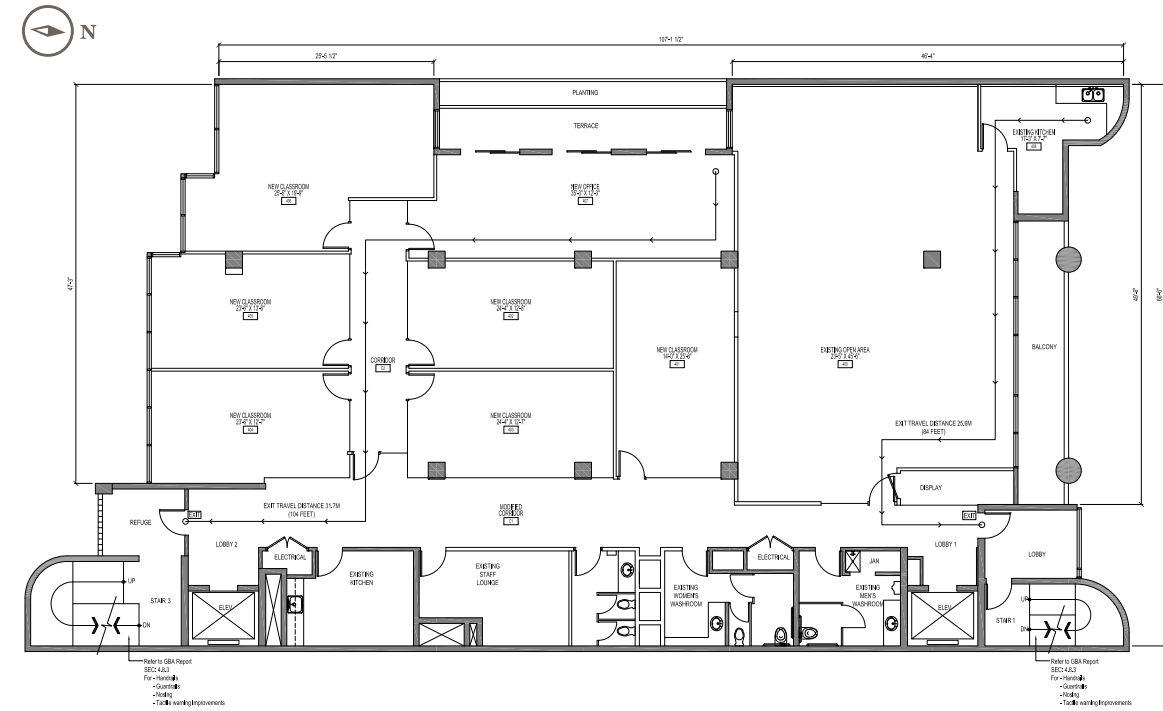


Floor Plans

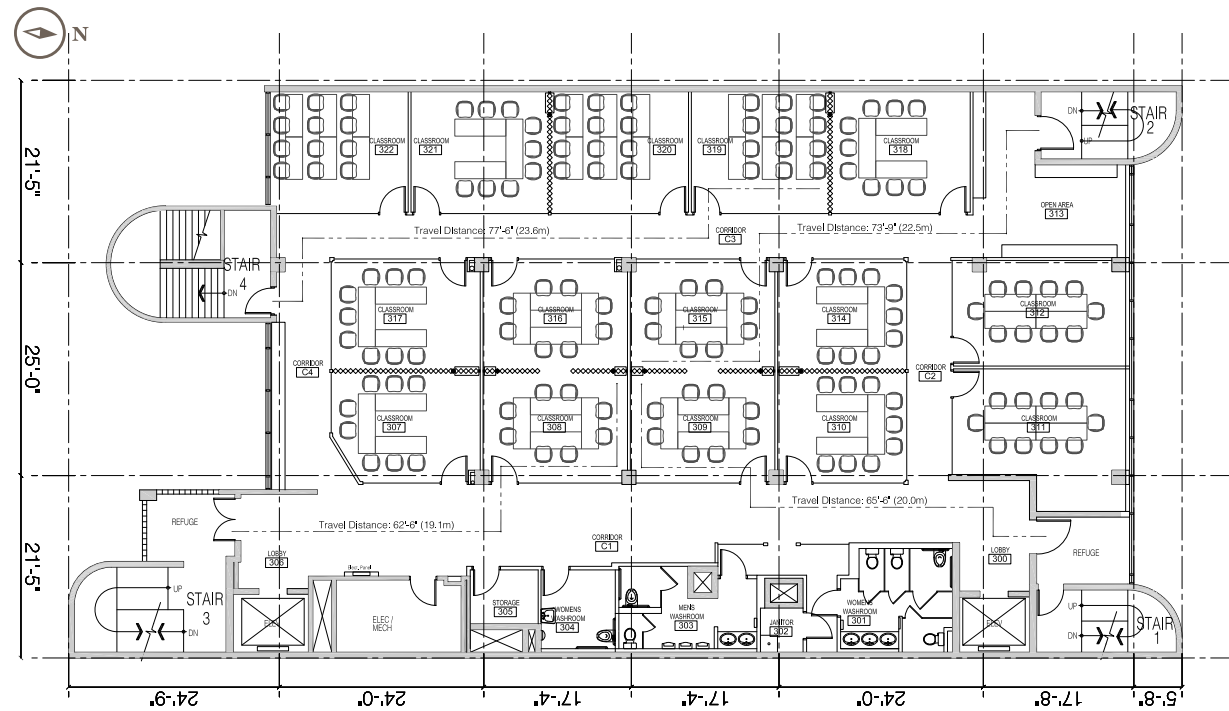
1050 Alberni Street



Unit 200
6,565 SF
Not to Scale



Unit 400-410
6,409 SF
Not to Scale

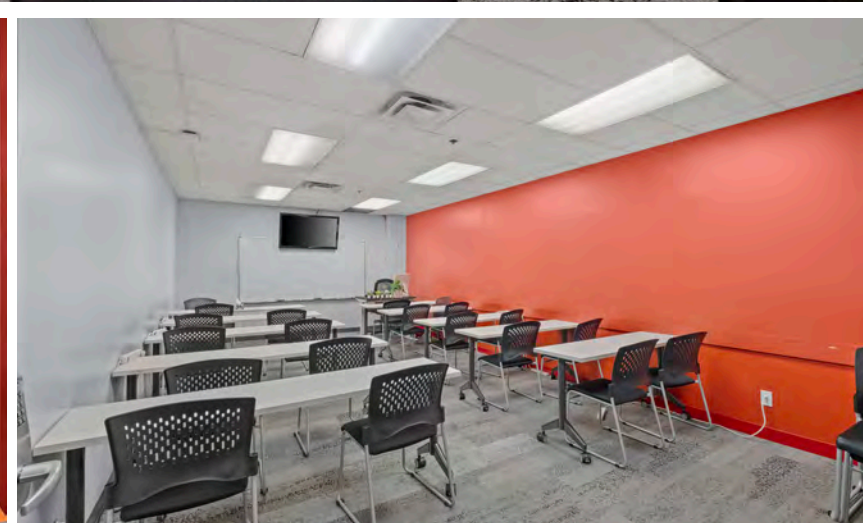


Unit 300
6,565 SF
Not to Scale

All measurements and dimensions provided are approximate and intended for identification purposes only.

Photos

1050 Alberni Street





Lennard:

Aaron Ulinder Personal Real Estate Corporation
Partner & Executive Vice President
C. 604.614.3455
aulinder@lennard.com

520-800 West Pender Street, Vancouver
604.636.2620
lennard.com

Statements and information contained herein are based on information furnished by principals and sources we deem reliable; however, we make no representation or warranty as to the accuracy, completeness or current status of such information and assume no responsibility for any errors, omissions, or misstatements. All information should be independently verified by the recipient. Lennard Commercial Realty, Brokerage.