

**AVISON
YOUNG**

For Lease

Campbell Heights East Business Park
19110 & 19130 24th Avenue, Surrey, BC



3,397 sf - 10,211 sf warehouse
and office space with dock and
grade loading

Joe Lehman*, Principal
604 757 4958
joe.lehman@avisonyoung.com
**Joe Lehman Personal Real Estate Corporation*

Jen Schroer, Associate
604 647 1359
jen.schroer@avisonyoung.com

Garth White*, Principal, SIOR
604 757 4960
garth.white@avisonyoung.com
**Garth White Personal Real Estate Corporation*



Property details

UNIT 101
6,814 sf

UNIT 102
3,397 sf

**Units 101 and 102 may be combined to create up to 10,211 sf of contiguous space. All measurements and the site plan are to be verified by the tenant.*

ZONING

IB-2 (Business Park 2) zoning accommodates a wide range of light impact industrial uses, including warehouse, wholesale and distribution.

LEASE RATE

\$19.50 psf, net

ADDITIONAL RENT

\$3.95 psf*

**Plus management fee - 7% of base rent*

AVAILABLE

Immediately

Opportunity









Avison Young is pleased to offer a prime opportunity to lease 3,397 to 10,211 square feet of well maintained warehouse space at Onni's Campbell Heights East Business Park. The space comprises two units that may be leased together or separately and features efficient layouts with improved office areas, rear dock and grade loading.

Location

Located just south of 24th Avenue, between 190th Street and 192nd Street in South Surrey, Campbell Heights East Business Park is well-connected to Highway 15, Highway 99 and is just 15 minutes from the Canada / USA border.

As one of the most desirable industrial locations in the Lower Mainland, Campbell Heights benefits from a diverse labour pool from Surrey, Langley and White Rock.

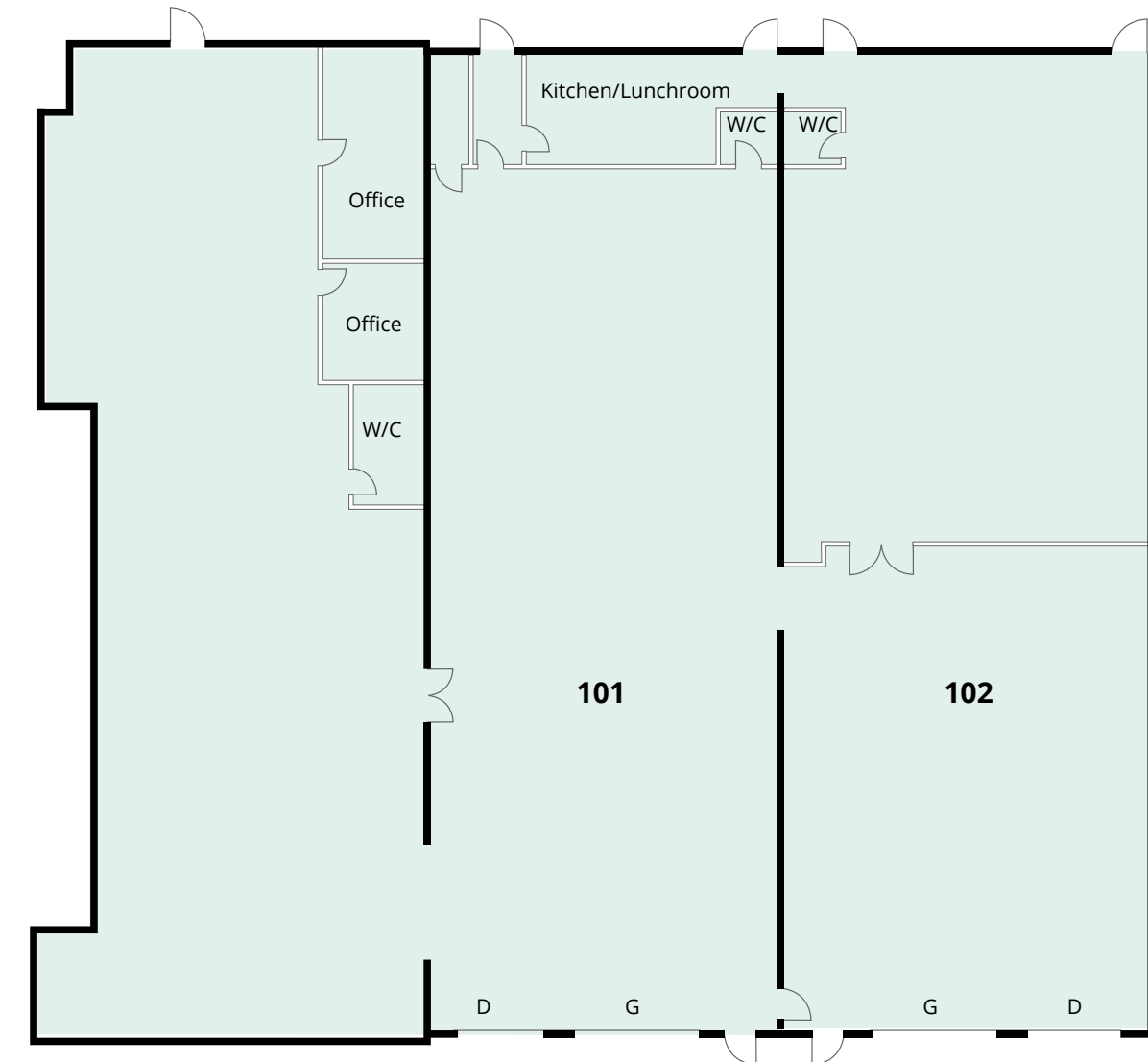
Property features

-  24' clear ceiling height
-  One (1) dock loading door and one (1) grade loading door per unit
-  130' loading court for ample truck maneuvering room
-  3-phase power
-  ESFR fire protection sprinkler system
-  Private offices with kitchen/lunchroom in unit 101
-  Two (2) washrooms in unit 101, one (1) wash-room in unit 102
-  Professionally owned and managed by Onni Group

Floorplan

G = Grade level loading

D = Dock level loading





Contact for more information

Joe Lehman*, Principal
604 757 4958
joe.lehman@avisonyoung.com
**Joe Lehman Personal Real Estate Corporation*

Jen Schroer, Associate
604 647 1359
jen.schroer@avisonyoung.com

Garth White*, Principal, SIOR
604 757 4960
garth.white@avisonyoung.com
**Garth White Personal Real Estate Corporation*

#2900-1055 West Georgia Street
P.O. Box 11109 Royal Centre
Vancouver, BC V6E 3P3, Canada

avisonyoung.ca

© 2026 Avison Young. All rights reserved. E. & O.E.
The information contained herein was obtained from sources that we deem reliable and, while thought to be correct, is not guaranteed by Avison Young Commercial Real Estate Services, LP ("Avison Young").

**AVISON
YOUNG**

**BEST
MANAGED
COMPANIES**
Platinum member