

# FOR LEASE

Retail/Office Opportunity at Dominant Mixed-Use Centre in NW Winnipeg

Garden City Plaza, 2211 McPhillips Street, Winnipeg, Manitoba



65,900  
VEHICLES  
PER DAY

Leila Ave. & McPhillips St. (2024)



200+  
PARKING  
STALLS



EXCELLENT ACCESS  
TO TRANSIT

(Transit Terminal at Garden City  
Shopping Centre)



BUSY  
RETAIL NODE



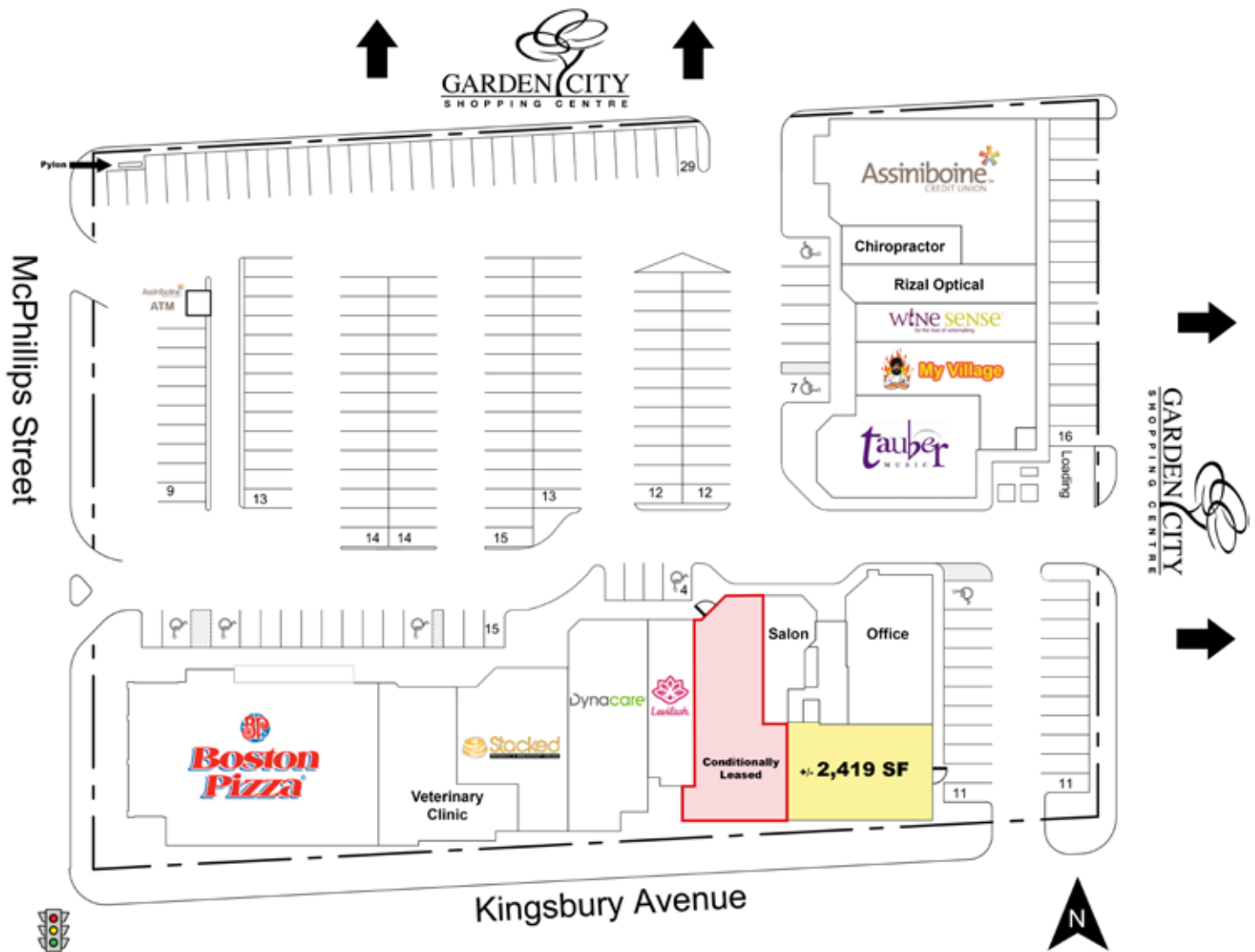
180,000+  
POPULATION

Based on Trade Area (2025)

# FOR LEASE

Garden City Plaza, 2211 McPhillips Street, Winnipeg, Manitoba

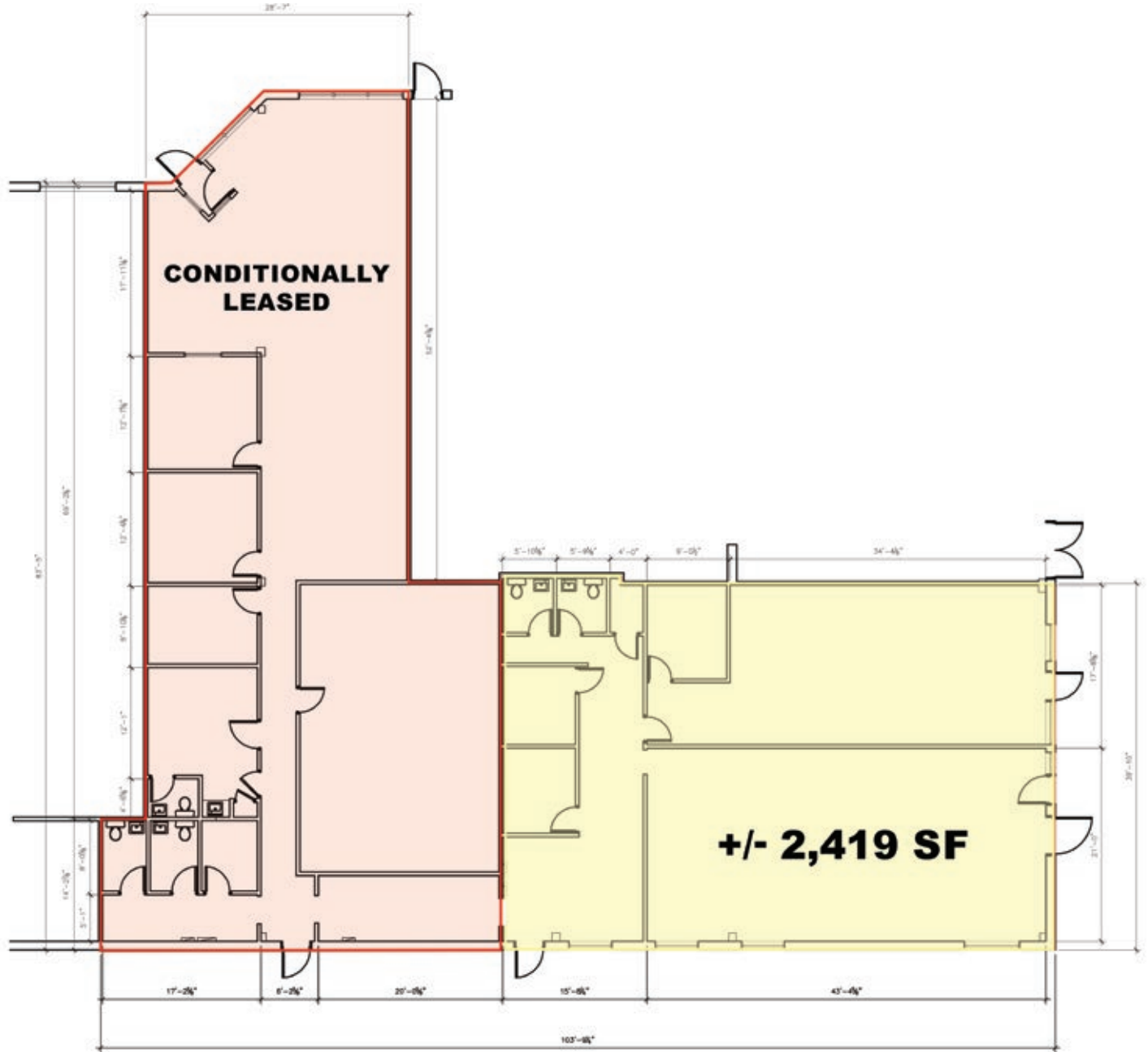
## SITE PLAN



# FOR LEASE

Garden City Plaza, 2211 McPhillips Street, Winnipeg, Manitoba

## FLOOR PLAN



[CLICK HERE TO TAKE A VIRTUAL TOUR](#)

204.474.2000

**Shindico**

# FOR LEASE

Garden City Plaza, 2211 McPhillips Street, Winnipeg, Manitoba

## PROPERTY SUMMARY

Available (July 1, 2026)	+/- 2,419 SF
Gross Leasable Area	53,660 SF
Property Taxes (2026 est.)	\$4.66/SF
CAM* (2026 est.)	\$6.25/SF
Parking	200+ stalls

\*plus management fee

## LOCATION

- Located on the east side of McPhillips between Leila Avenue and Kingsbury Avenue
- Anchored by Assiniboine Credit Union and Boston Pizza
- **Adjacent to Garden City Shopping Centre with cross access in two directions**
- Surrounded by major retailers, including Walmart, Canadian Tire and Home Depot
- Surrounded by customers in the densely populated Garden City Retail Node
- **Close proximity to Seven Oaks General Hospital, The Wellness Institute and the Seven Oaks Sportsplex**

## DEMOGRAPHICS

	5 min. Drive Time	10 min. Drive Time
Total Population	53,658	183,429
Daytime Population	39,414	160,697
Households	18,269	63,923
Median Age	34.9	36.4
Avg. Household Income	\$106,264	\$103,940

Environics Analytics ©2025



204.474.2000

**Shindico**

# FOR LEASE

Garden City Plaza, 2211 McPhillips Street, Winnipeg, Manitoba



**TRAFFIC LINKS/ACCESS**

39,800 vehicles per day on McPhillips Street between Jefferson Avenue and Leila Avenue.

26,100 vehicles per day on Leila Avenue between McPhillips Street and Garden Park Drive.

City of Winnipeg Public Works Department 2024

FOR MORE INFORMATION, PLEASE CONTACT:

**Michael Stronger**

\*SHINDICO REALTY, MICHAEL STRONGER and SHINDICO REALTY are affiliated Brokers  
P (204) 928-8237  
C (204) 793-3448  
mstronger@shindico.com

**Kathryn Comeault**

P (204) 928-8227  
C (204) 688-1089  
kcomeault@shindico.com

**Shindico Realty Inc.**  
200-1355 Taylor Avenue  
Winnipeg, Manitoba R3M 3Y9  
P (204) 474-2000  
inquire@shindico.com  
www.shindico.com



*Shindico is dedicated to the protection of the environment and the communities that we are a part of.*

The accuracy of the information set out herein has not been confirmed, and Shindico Realty Inc. and its affiliates make no representations or warranties as to the accuracy of the information and assumes no responsibility for errors or omissions. The recipient is responsible to verify the accuracy of any information and bears all risk related to any inaccuracies. 052926