



equity centre

300-306 town centre / markham

# Office space for lease



[equity-centre.com](http://equity-centre.com)

## Get more information

### Will Goodman

Sales Representative  
Associate

416 819 3005

[will.goodman@avisonyoung.com](mailto:will.goodman@avisonyoung.com)

### Dwayne McGillivray

Sales Representative  
Vice President

416 566 7887

[dwayne.mcgillivray@avisonyoung.com](mailto:dwayne.mcgillivray@avisonyoung.com)

### Adam Walman

Sales Representative  
Principal | Vice President

647 989 2332

[adam.walman@avisonyoung.com](mailto:adam.walman@avisonyoung.com)



ADGAR  
CANADA

AVISON  
YOUNG

# Office space for lease



## 300 Town Centre Boulevard

<b>Suite 100</b>	7,376 sf	<a href="#">Floor Plan</a>
<b>Suite 203</b>	5,111 sf	<a href="#">Floor Plan</a>
<b>3<sup>rd</sup> Floor</b>	14,178 sf - full floor	<a href="#">Floor Plan</a>
<b>4<sup>th</sup> Floor</b>	14,178 sf - full floor	<a href="#">Floor Plan</a>
<b>Floors 3-4</b>	28,356 sf	<a href="#">Floor Plan</a>



## 302 Town Centre Boulevard

<b>Suite 100</b>	4,066 sf	<a href="#">Floor Plan</a>
<b>Suite 102</b>	6,998 sf	<a href="#">Floor Plan</a>
<b>Suite 401</b>	6,781 sf	<a href="#">Floor Plan</a>



## 306 Town Centre Boulevard

<b>Suite 201</b>	6,690 sf	<a href="#">Floor Plan</a>
<b>Suite 300</b>	14,156 sf - full floor	<a href="#">Floor Plan</a>

## Features

- Unique three building campus
- Signage opportunity
- Abundance of natural light
- Close proximity to many amenities
- Corporate enclave with private outdoor spaces
- Free underground parking
- Close to Downtown Markham
- Easy access to Highways 7, 407 and 404

### Net Rent

\$16.50 psf

### Additional Rent

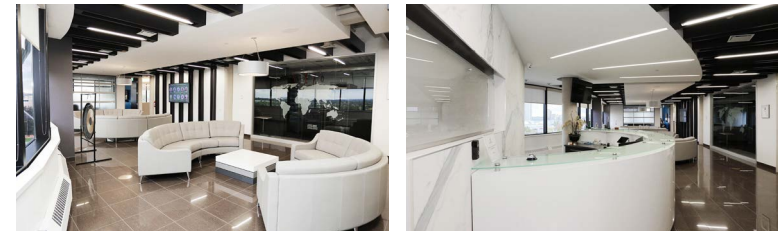
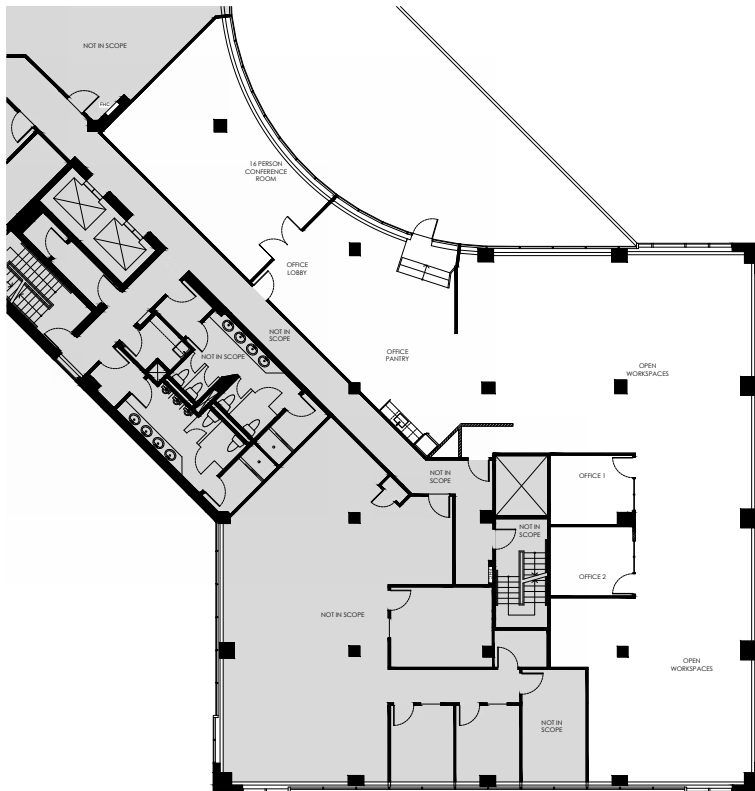
\$18.87 psf (2026 estimate)

### Parking

3.5 : 1,000 sf

## 300 Town Centre Boulevard - Model Suite Program Underway

Suite 203 - 5,111 sf



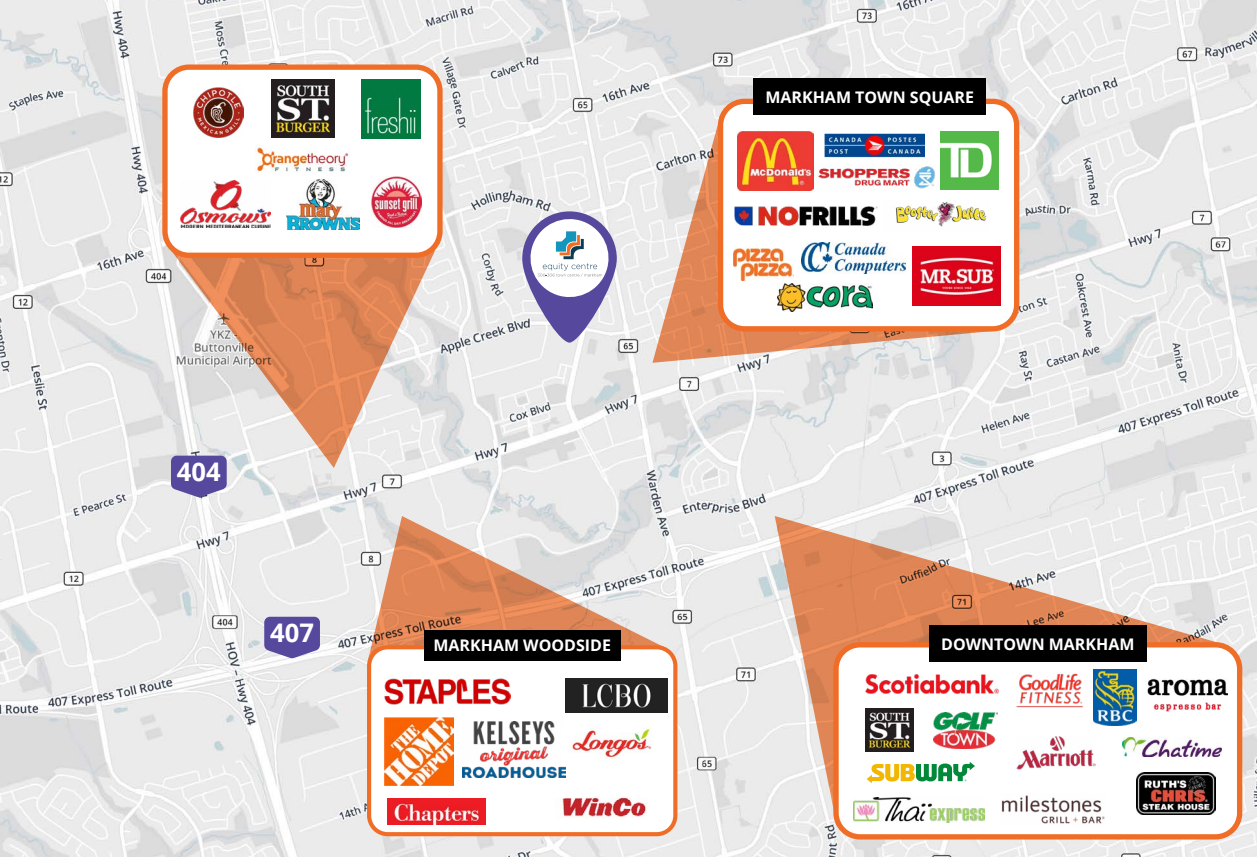
\*Sample of Finishes in Landlord's Portfolio

**Will Goodman**  
Sales Representative  
Associate  
416 819 3005  
will.goodman@avisonyoung.com

**Dwayne McGillivray**  
Sales Representative  
Vice President  
416 566 7887  
dwayne.mcgillivray@avisonyoung.com

**Adam Walman**  
Sales Representative  
Principal | Vice President  
647 989 2332  
adam.walman@avisonyoung.com





equity centre

300-306 town centre / markham

## Get more information

**Will Goodman**  
Sales Representative  
Associate  
416 819 3005  
will.goodman@avisonyoung.com

**Dwayne McGillivray**  
Sales Representative  
Vice President  
416 566 7887  
dwayne.mcgillivray@avisonyoung.com

**Adam Walman**  
Sales Representative  
Principal | Vice President  
647 989 2332  
adam.walman@avisonyoung.com

### Amenities within 5 km

**435**

RESTAURANTS

**622**

RETAIL

**18**

HOTELS

**32**

FITNESS CENTRES

**72**

BANKS

**21**

GAS STATIONS

Equity Centre is located near the north west corner of Warden Avenue and Highway 7 East in Markham. With excellent highway, amenity and public transit access.

### Drive Times

**5 mins** to Downtown Markham

**10 mins** to Markville Mall

**26 mins** to Pearson Airport

**35 mins** to Downtown



equity-centre.com

