

For Lease

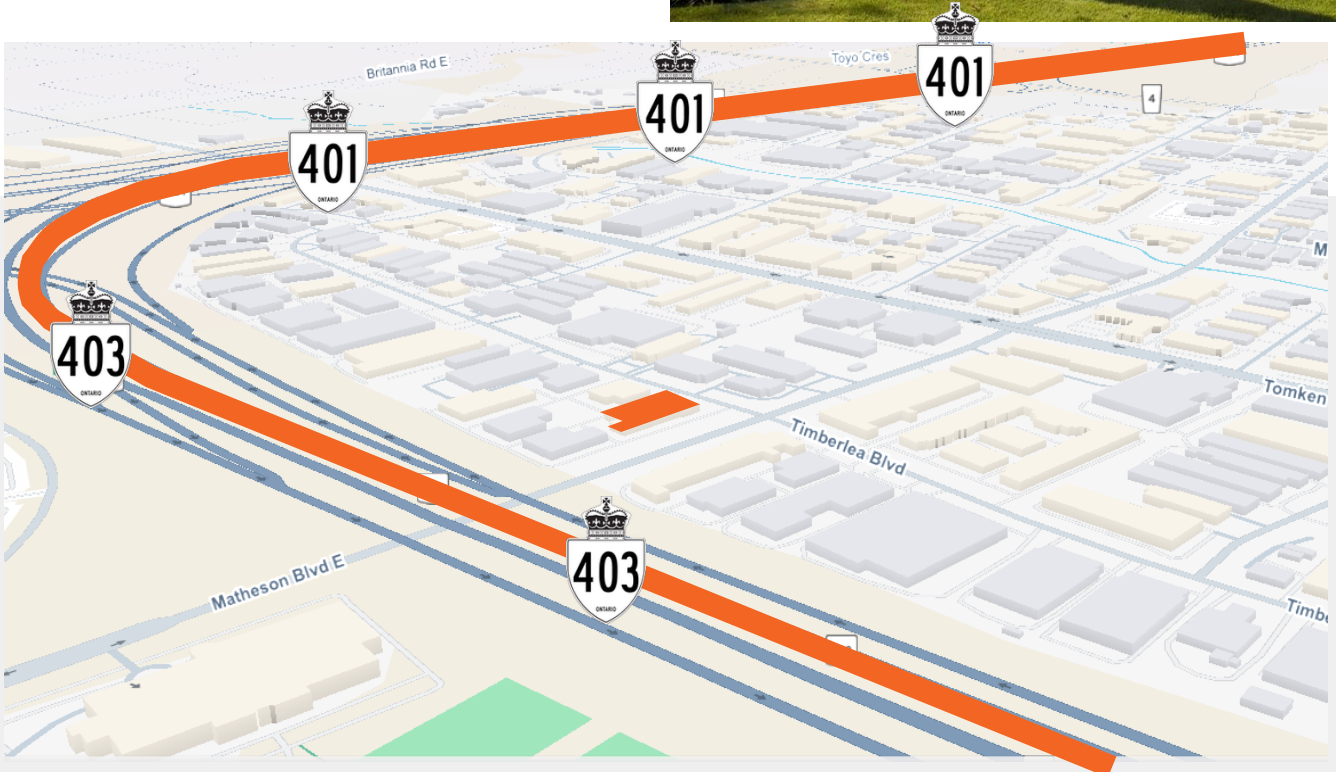


5430 Timberlea Blvd, Unit 2

Mississauga, ON

Located in one of Mississauga's most accessible industrial nodes, 5430 Timberlea Blvd, Unit 2 offers immediate access to Highways 401 and 403.

- Available February 1, 2026
- 17,351 SF
- 17' clear height
- 3 truck-level doors

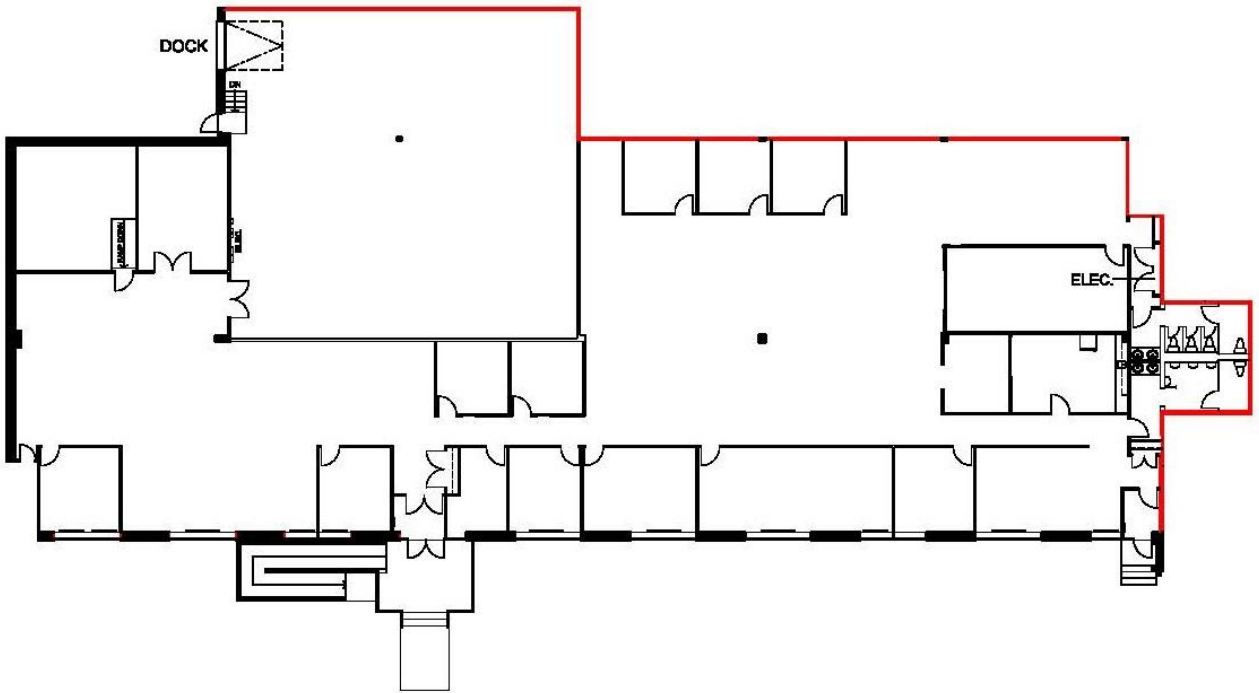


For leasing opportunities

Jeff Wade, Leasing Representative
437.227.3456 | jwade@dream.ca

Dream Industrial REIT
leasing.dream.ca

Floor Plan



Available Size:	Rates:	Total Additional Rent:	Availability:
17,351 SF	\$17.95 PSF	\$8.75 PSF	February 1, 2026
Clear Height:	Loading Doors:	Zoning:	Power:
17'	3 TL	E2 - 24	600 V / 125 A