

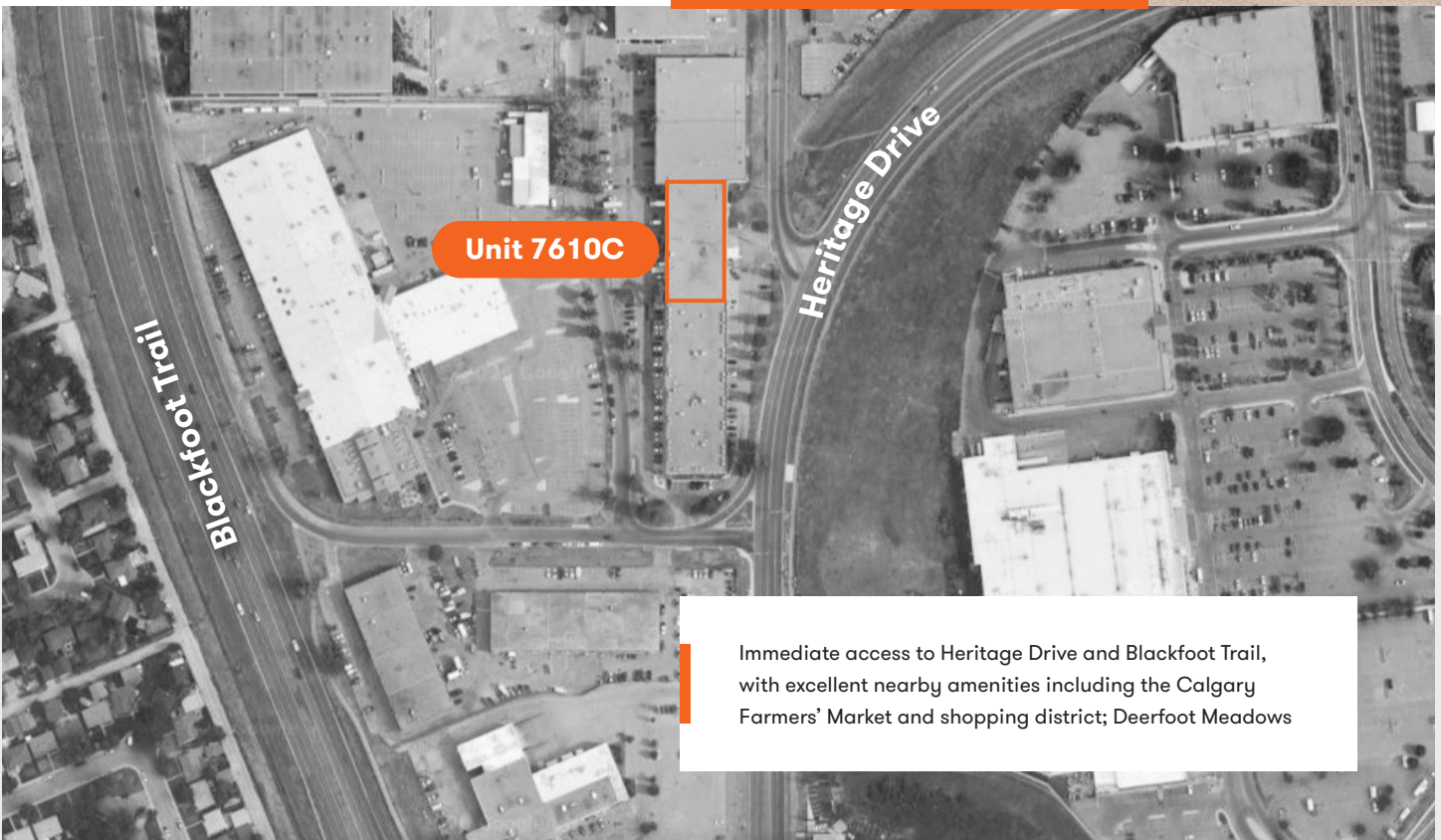
For Lease



7210 – 7610 5 Street SE, Unit 7610C

Glenmore Business Park | Calgary, AB

- Available August 1, 2026
- 5,059 SF
- Warehouse bay with small office area
- 2 dock loading doors with dock levelers



Unit 7610C

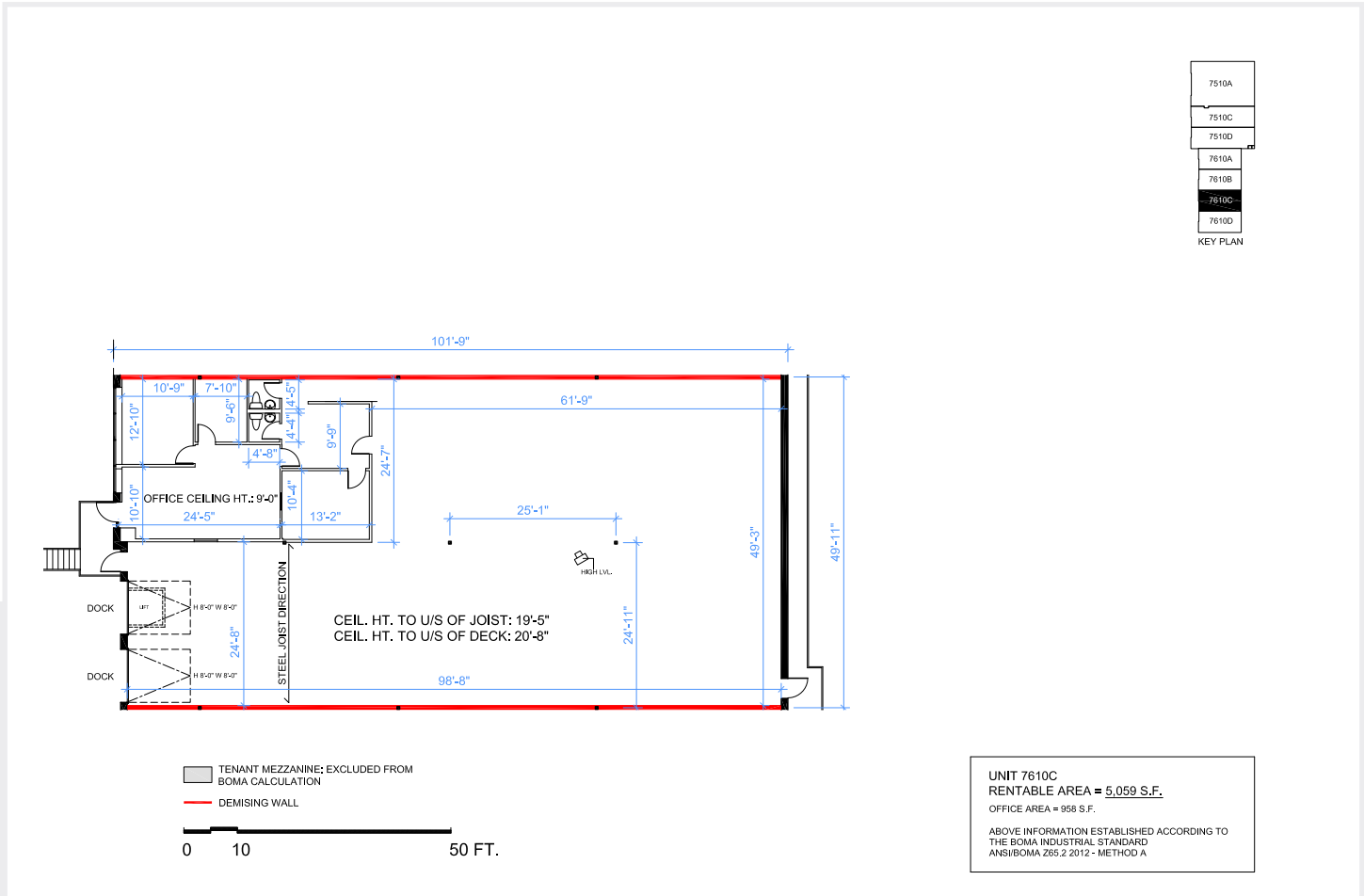
Immediate access to Heritage Drive and Blackfoot Trail, with excellent nearby amenities including the Calgary Farmers' Market and shopping district; Deerfoot Meadows

For leasing opportunities

John Vautour, Director, Leasing
403.536.3549 | jvautour@dream.ca

Dream Industrial REIT
leasing.dream.ca

Floor Plan



Available area:	Loading:	Ceiling Height:	Power:
5,059 SF	2 Dock Doors	19'5"	150 Amps (120/208 Volts)
Availability:	Rental Rates:	Operating Costs:	Zoning:
August 1, 2026	Market Rates	CAM \$4.77 TAX \$2.61 (est. 2026)	I-G (Industrial General)

Dream Industrial is an innovative and customer-focused owner, operator, and developer of high-quality industrial properties. Dream Industrial invests in and manages over 71 million square feet of industrial assets in Canada, Europe, and the United States for over 1,500 occupiers operating across a diversity of sectors. The organization has a track record of delivering best-in-class modern industrial properties globally, with a development pipeline that includes approximately 6 million square feet of active projects and an additional 7 million square feet available for expansion or built-to-suit purposes.

Dream Industrial is part of the Dream Group of Companies and is managed by Dream Unlimited Corp. (TSX:DRM), a leading global real estate asset manager and institutional investor with \$27 billion in assets under management. Dream Industrial is comprised of Dream Industrial REIT (TSX:DIR.UN) as well as several private vehicles.