



# Pender Place

700 WEST PENDER

## A Workplace Reimagined

### Suite 304



2,378 SF (estimated)  
AVAILABLE IMMEDIATELY

- Space is built out with six offices, boardroom, kitchenette, reception and open desk space.
- Corner unit with lots of natural light and modern improvements.

Net Rent:  
Contact listing agents

Additional Rent:  
\$24.55 (2026 estimate)

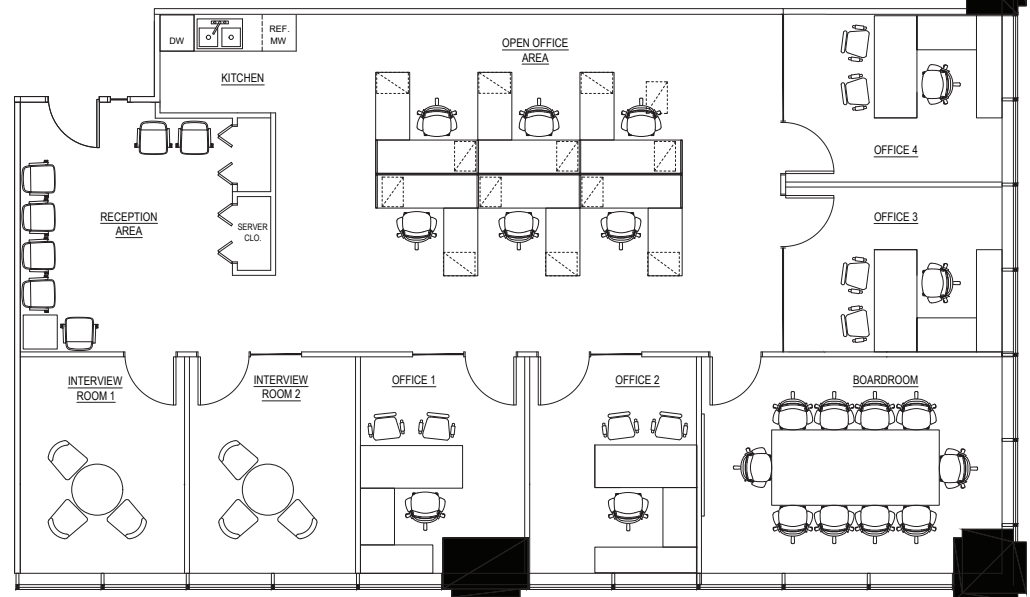
Parking:  
\$285 Random (plus taxes)  
\$395 Reserved (plus taxes)

#### Listing Agents:

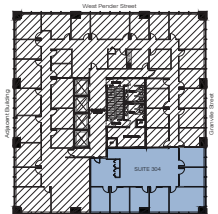
**Luke Gibson**  
604 662 5142  
luke.gibson@cbre.com

**Myah Ollek**  
604 662 5146  
myah.ollek@cbre.com

**Tara Finnegan**  
604 662 5159  
tara.finnegan@cbre.com



Not to scale



This disclaimer shall apply to CBRE Limited, Real Estate Brokerage, and to all other divisions of the Corporation; to include all employees and independent contractors ("CBRE"). All references to CBRE Limited herein shall be deemed to include CBRE, Inc. The information set out herein, including, without limitation, any projections, images, opinions, assumptions and estimates obtained from third parties (the "Information") has not been verified by CBRE, and CBRE does not represent, warrant or guarantee the accuracy, correctness and completeness of the Information. CBRE does not accept or assume any responsibility or liability, direct or consequential, for the Information or the recipient's reliance upon the Information. The recipient of the Information should take such steps as the recipient may deem necessary to verify the Information prior to placing any reliance upon the Information. The Information may change and any property described in the Information may be withdrawn from the market at any time without notice or obligation to the recipient from CBRE. CBRE and the CBRE logo are the service marks of CBRE Limited and/or its affiliated or related companies in other countries. All other marks displayed on this document are the property of their respective owners. All Rights Reserved.



# Pender Place

700 WEST PENDER

## *A Workplace Reimagined*

### Suite 606

1,893 SF (estimated)  
AVAILABLE IMMEDIATELY

- Space is built out with five offices, kitchenette, reception area and open desk space.
- Corner unit with lots of natural light and modern improvements.

Net Rent:  
Contact listing agents

Additional Rent:  
\$24.55 (2026 estimate)

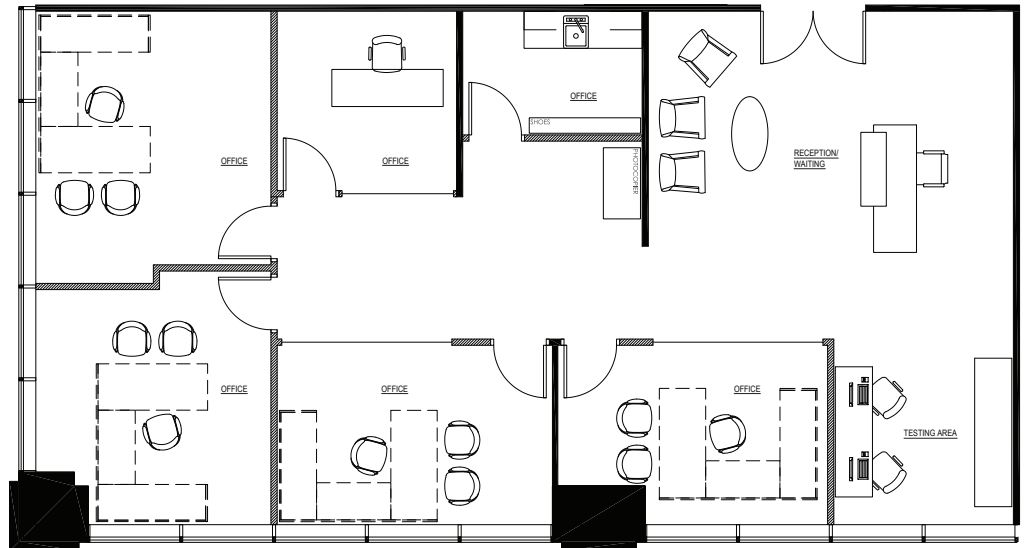
Parking:  
\$285 Random (plus taxes)  
\$395 Reserved (plus taxes)

#### Listing Agents:

**Luke Gibson**  
604 662 5142  
luke.gibson@cbre.com

**Myah Ollek**  
604 662 5146  
myah.ollek@cbre.com

**Tara Finnegan**  
604 662 5159  
tara.finnegan@cbre.com



Not to scale



This disclaimer shall apply to CBRE Limited, Real Estate Brokerage, and to all other divisions of the Corporation; to include all employees and independent contractors ("CBRE"). All references to CBRE Limited herein shall be deemed to include CBRE, Inc. The information set out herein, including, without limitation, any projections, images, opinions, assumptions and estimates obtained from third parties (the "Information") has not been verified by CBRE, and CBRE does not represent, warrant or guarantee the accuracy, correctness and completeness of the Information. CBRE does not accept or assume any responsibility or liability, direct or consequential, for the Information or the recipient's reliance upon the Information. The recipient of the Information should take such steps as the recipient may deem necessary to verify the Information prior to placing any reliance upon the Information. The Information may change and any property described in the Information may be withdrawn from the market at any time without notice or obligation to the recipient from CBRE. CBRE and the CBRE logo are the service marks of CBRE Limited and/or its affiliated or related companies in other countries. All other marks displayed on this document are the property of their respective owners. All Rights Reserved.