

# For Lease

# 1008 Homer Street

Vancouver, BC

**Corbin MacDonald\***

Vice President

+1 604 313 4572

corbin.macdonald@jll.com

**Cam Bertsch**

Senior Associate

+1 604 998 6035

cam.bertsch@jll.com





# Overview

Located in the heart of Yaletown on the corner of Homer and Nelson, the property is surrounded by some of the city's best restaurants, bars, and retailers, and is steps away from the picturesque False Creek Seawall. 1008 Homer is highly accessible as the property is walking distance to the Yaletown-Roundhouse Station, adjacent to the Yaletown Parking Garage, and serviced by several bus routes. The building is rich with heritage and charm and has been updated with private bicycle storage and after-hours security card access.



100

Rider's Paradise



83

Very Bikeable



98

Walker's Paradise

## Available Suites

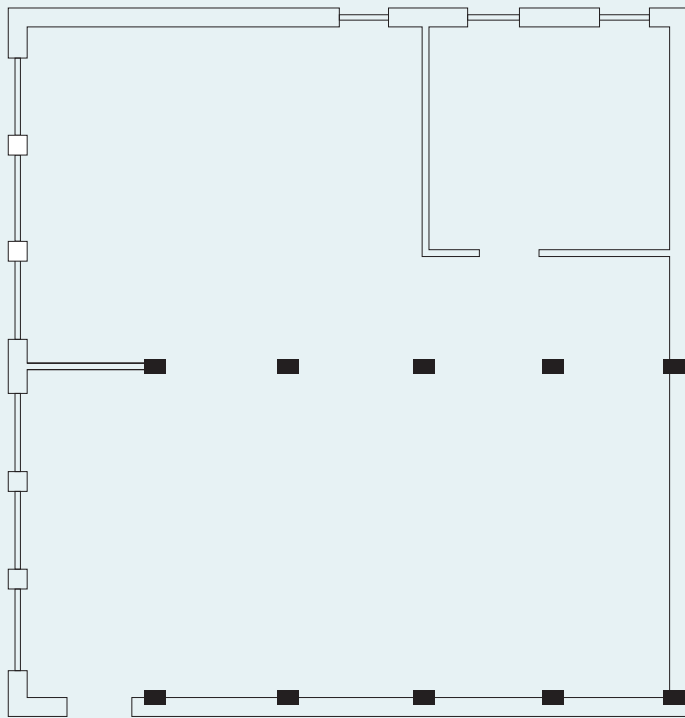
Suite	Size	Availability
310	2,000 SF	Immediately
316	2,900 SF	Immediately

Corner of Homer & Nelson



# Suite 310

## Floor Plan



## Salient Details



Size  
2,000 SF



Availability  
Immediately



Gross Asking Rate  
Contact listing agents

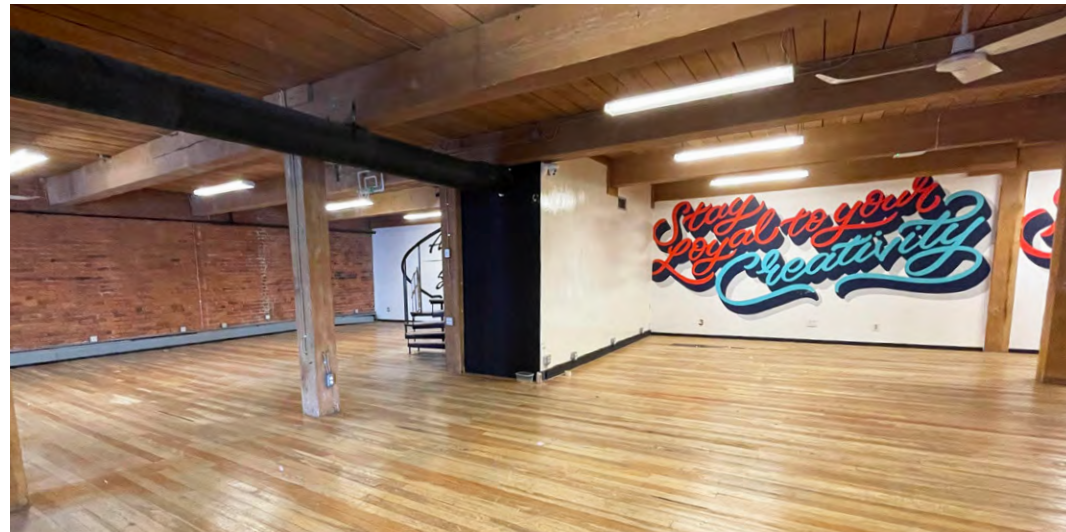
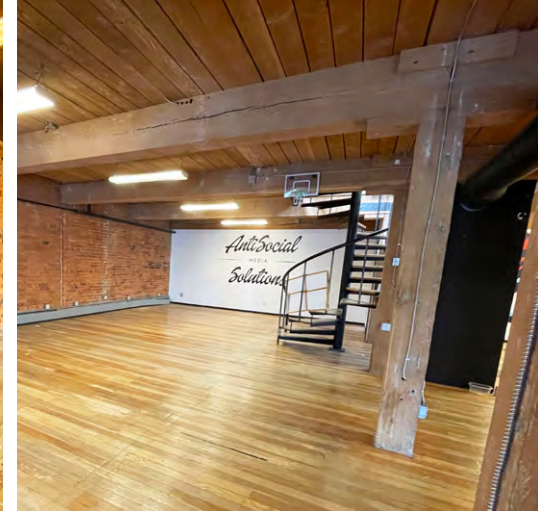
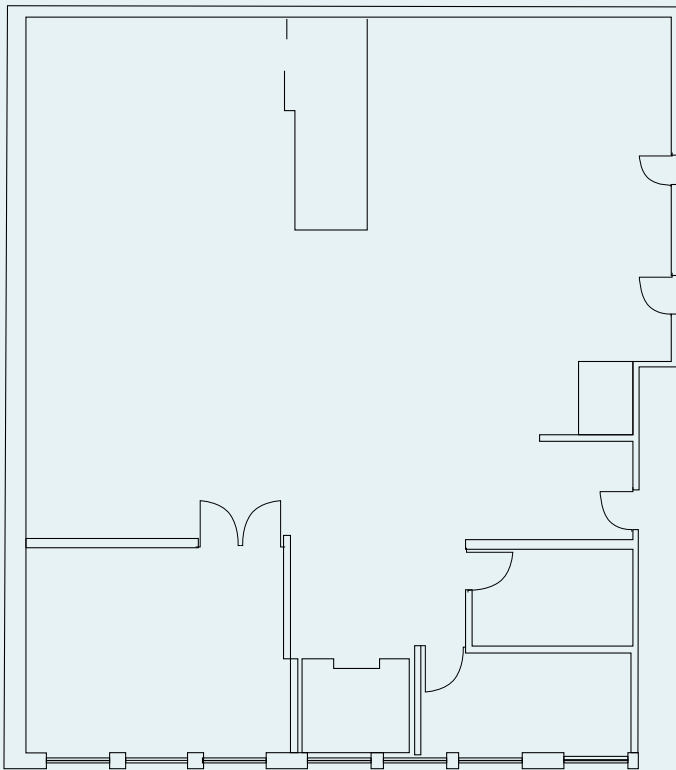
### Suite Comments

- Nicely improved corner unit
- One glass meeting room
- One kitchenette
- Primarily open plan work area



# Suite 316

## Floor Plan



## Salient Details



Size  
2,900 SF



Availability  
Immediately



Gross Asking Rate  
Contact listing agents

### Suite Comments

- One interior office
- One exterior office
- One boardroom
- Primarily open plan
- Brick and beam

# Nearby Amenities

## WELLNESS

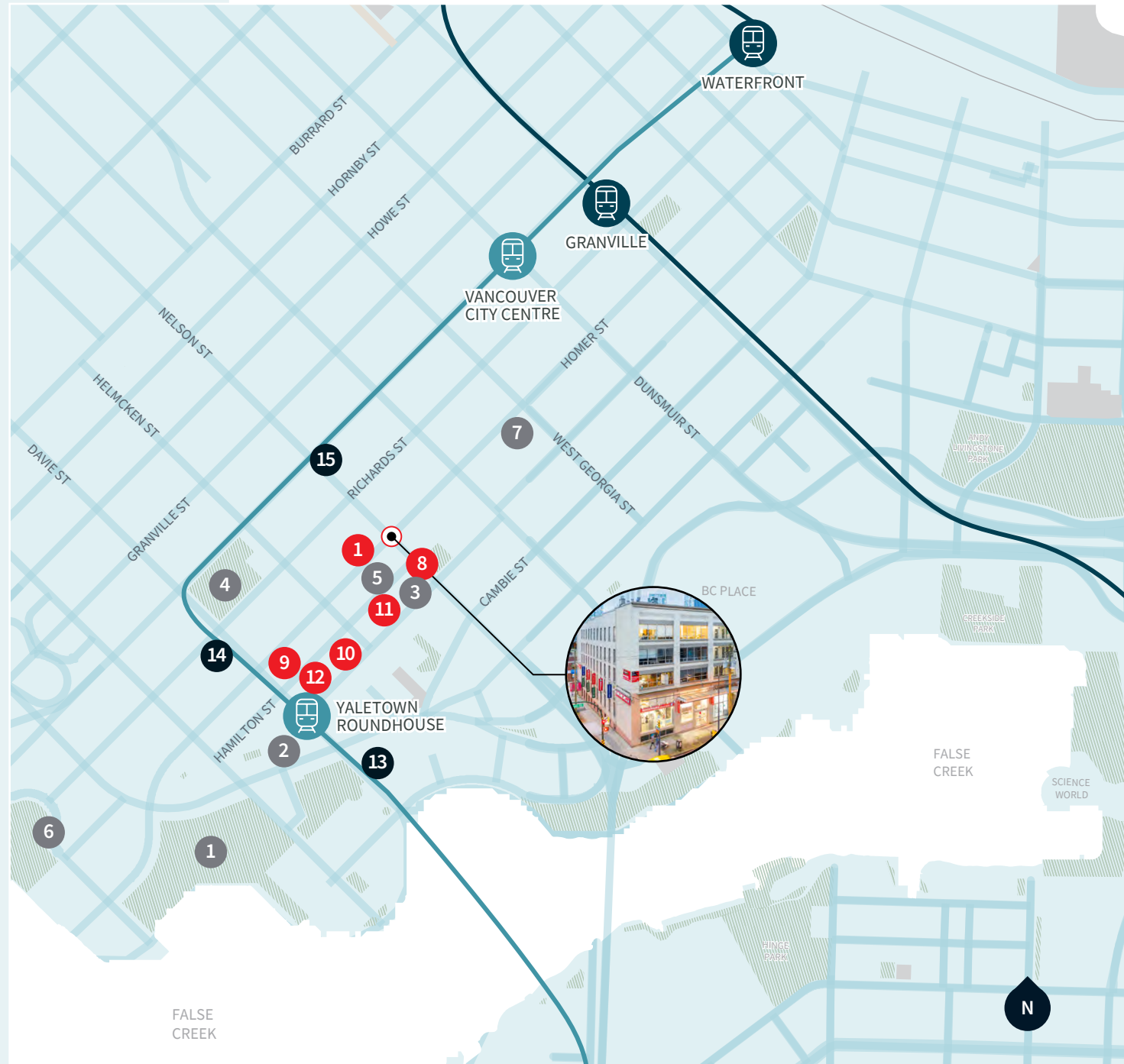
1. David Lam Park
2. SoulCycle
3. Skoah Yaletown
4. Emery Barnes Park
5. YYOGA
6. Seawall
7. Kondi Fitness

## FOOD & FUN

8. Earls Kitchen + Bar
9. Cactus Club Cafe
10. Yaletown Brew Pub
11. Blue Water Cafe
12. The Flying Pig

## NECESSITIES

13. Urban Fare
14. Choices Market
15. Nesters Food Market







**Corbin MacDonald\***

Vice President

+1 604 313 4572

corbin.macdonald@jll.com

**Cam Bertsch**

Senior Associate

+1 604 998 6035

cam.bertsch@jll.com

**Jones Lang LaSalle Real Estate  
Services Inc.**

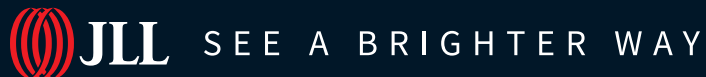
510 West Georgia Street

Suite 2150

Vancouver, BC

V6B 0M3

**jll.ca**



Although information has been obtained from sources deemed reliable, neither Owner nor JLL makes any guarantees, warranties or representations, express or implied, as to the completeness or accuracy as to the information contained herein. Any projections, opinions, assumptions or estimates used are for example only. There may be differences between projected and actual results, and those differences may be material. The Property may be withdrawn without notice. Neither Owner nor JLL accepts any liability for any loss or damage suffered by any party resulting from reliance on this information. If the recipient of this information has signed a confidentiality agreement regarding this matter, this information is subject to the terms of that agreement.