

For Lease

621 & 625 Broughton St
Victoria, BC



Central Retail/Office Space at Broughton Square

- ✓ Steps from the Inner Harbour, Bay Centre, and other tourist destinations
- ✓ Central downtown location between CBD and Old Town
- ✓ High foot & vehicle traffic counts year-round
- ✓ Prominent signage opportunities and large storefront windows
- ✓ Ample parking in building parkade

Contact Us

James Murray*, Vice President
250.382.3400
james.murray@avisonyoung.com
**Personal Real Estate Corporation*

Nathaniel Simpson, Vice President
250.382.3400
nathaniel.simpson@avisonyoung.com

**AVISON
YOUNG**

Broughton Square

Victoria, BC

SIZES

621 Broughton St – 1,465 SF

625 Broughton St – 891 SF

NET RENT

621 Broughton St - \$19.00 per SF

625 Broughton St – \$23.00 per SF

ADDITIONAL RENT

\$22.65 per SF (2025 est.)

AVAILABLE

Immediately

PARKING

367 stalls in parking lot above retail units

TENANTS IN BUILDING

Foxy Box, Victoria Olive Oil Company, Hunt & Gather Hair Co., Sounds Like Coffee, Starlite Soap Studio, and more!

ZONING

OTD-1 Old Town District

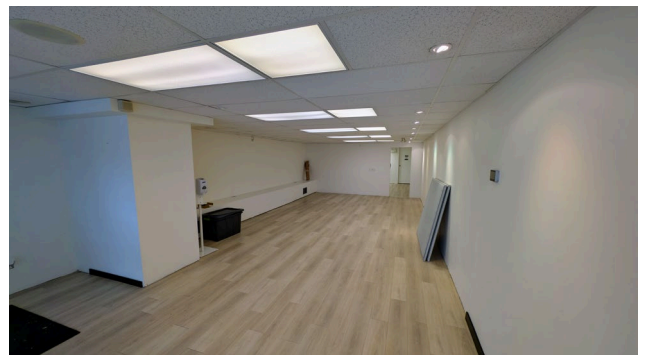
Permitted uses include:

- Assembly
- Financial Service
- Food & Beverage Service
- Office
- Personal Service
- Retail
- Studio
- and more!

**AVISON
YOUNG**

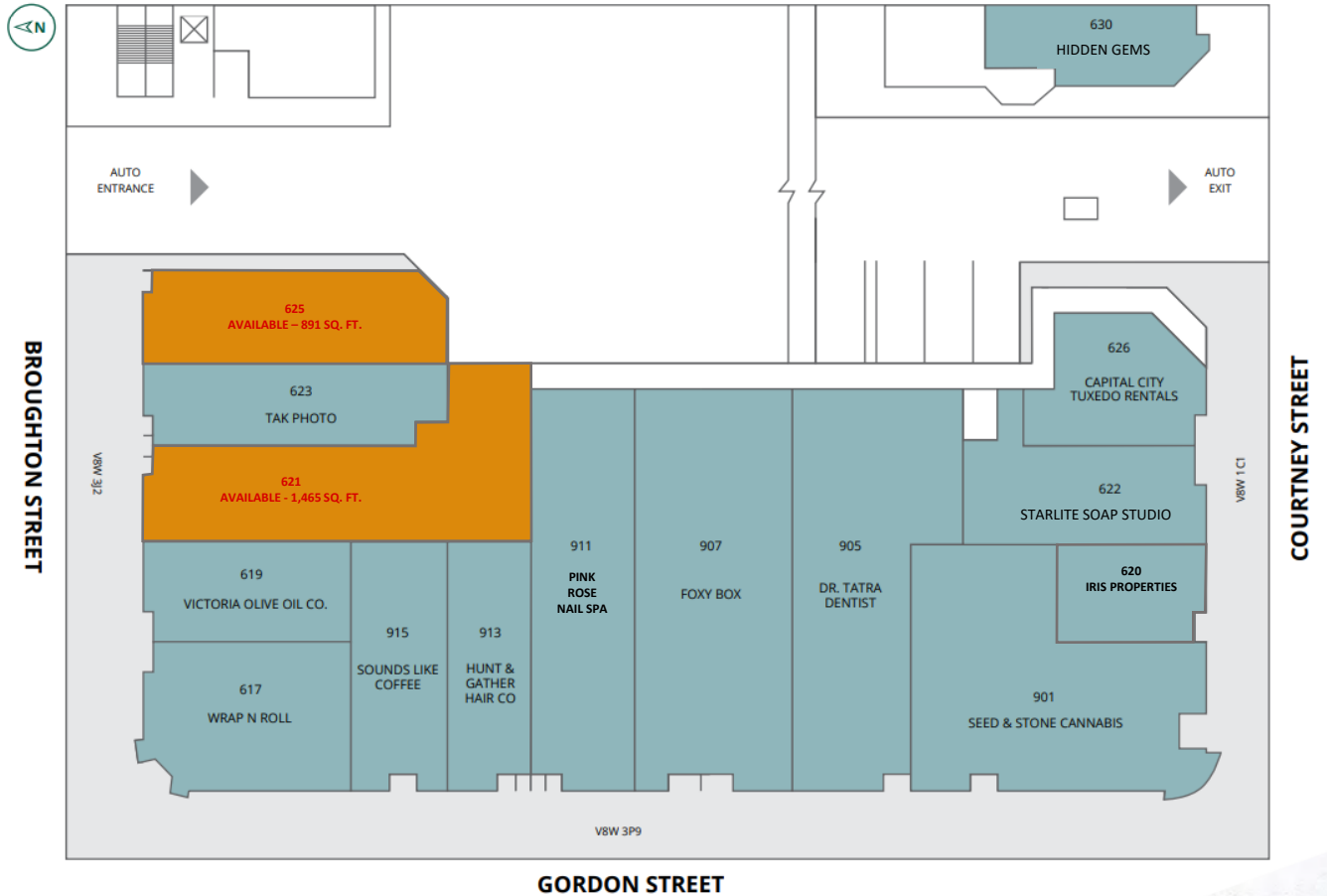
The Opportunity

Lease ground-level commercial space at the heart of Downtown Victoria, situated between the Central Business District and Old Town. The subject space benefits from high traffic counts year-round for both vehicles and pedestrians, proximity to a variety of thriving businesses, and a central location within Victoria's Downtown Core.



Site Plan

AVISON
YOUNG



Contact Us

James Murray*, Vice President
250.382.3400
james.murray@avisonyoung.com
**Personal Real Estate Corporation*

Nathaniel Simpson, Vice President
250.382.3400
nathaniel.simpson@avisonyoung.com

