

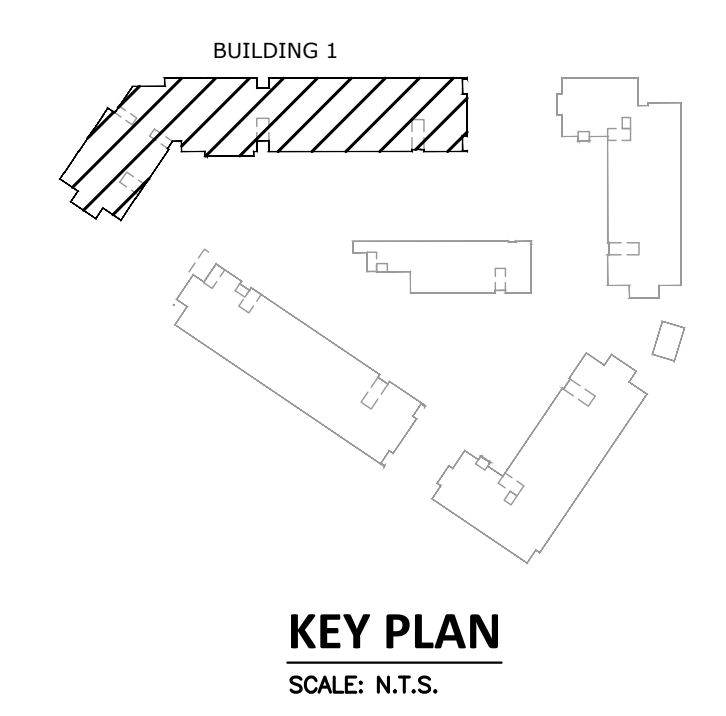
- KEYNOTES**
- 1 PRINCIPAL BUILDING ENTRANCE
 - 2 FIRE DEPARTMENT CONNECTION (REFER TO MECHANICAL)
 - 3 HOSE BIBB (REFER TO MECHANICAL)
 - 4 GAS METER (REFER TO MECHANICAL)
 - 5 POWER DOOR OPERATOR ON ALUM DOOR GUARD
 - 6 ENTERPHONE
 - 7 ANNUNCIATOR PANEL
 - 8 POWER DOOR OPERATOR
 - 9 MAILBOXES
 - 10 SPRINKLER PROTECTED GLAZING (CO-ORD WITH AVALON)
 - 11 GLAZED GUARD RAILS
 - 12 PRIVACY SCREEN (REFER TO 1/A562) CENTER ON DEMISING WALL TYP.
 - 13 STANDPIPE
 - 14 FIRE EXTINGUISHER CABINET, RECESSED
 - 15 FLUE SHAFT/VENTS (REFER TO MECHANICAL)
 - 16 WALL MOUNTED ROOF ACCESS LADDER
 - 17 ALIGN FINISHED SURFACE
 - 18 PAVERS ON PEDESTALS (REFER TO ROOF TYPE R3/R4)
 - 19 RAISED PLANTER (BY OWNER)
 - 20 PREFIN. RAIN WATER LEADER (TO MATCH ADJACENT WALL CLADDING), DRAIN INTO LDS (REFER TO CIVIL)
 - 21 PREFIN. RAIN WATER LEADER (TO MATCH ADJACENT WALL CLADDING) c/w SPLASH PAD
 - 22 RAIN WATER LEADER IN JOIST SPACE (CO-ORDINATE WITH DUCTWORK)
 - 23 RAIN WATER LEADER IN JOIST SPACE (CO-ORDINATE WITH DUCTWORK)
 - 24 LOUVRE, SEE MECHANICAL
 - 25 MECHANICAL SHAFT (REFER TO MECHANICAL); INSTALL FIRE DAMPER AT FLOOR ASSEMBLY
 - 26 ELECTRIC VEHICLE CHARGING STALL (REFER TO 4/A552 AND ELECTRICAL)
 - 27 FUTURE TENANT FIT-UP POWER DOOR OPERATOR & ALUM. GUIDE RAIL
 - 28 FUTURE TENANT FIT-UP PLUMBING PENETRATIONS TO FACILITATE INSTALLATION OF FUTURE UNIVERSAL TOILET ROOM - BY TENANT (REFER TO MECHANICAL)
 - 29 BASEBOARD HEATER
 - 30 LUX 'VERSION 2' PRIVACY SCREEN (REFER TO 2/A504)
 - 31 LINE OF BUILDING BELOW
 - 32 LINE OF EAVESTROUGH
 - 33 LINE OF BALCONY BELOW
 - 34 LINE OF CANOPY BELOW
 - 35 SCUPPER (PRIMARY DRAINAGE)
 - 36 OVERFLOW SCUPPER
 - 37 ROOF DRAIN
 - 38 LOCATE ROOF DRAIN SO RWL IS TIGHT IN CORNER OF CLOSET
 - 39 PARAPET
 - 40 THROUGH-WALL PARAPET DRAIN
 - 41 3'-0" x 3'-0" ATTIC ACCESS HATCH
 - 42 4" BUILT-UP WOOD FLOOR TO MATCH CONCRETE ELEVATION OF EL.100'-0"
 - 43 FIREBLOCK - EXTEND INTO EAVES TYP.
 - 44 ROOF VENT (INSTALL BETWEEN TRUSSES)
 - 45 3'-0" WIDE CATWALK (CO-ORDINATE TRUSS SPACING WITH MANUFACTURER)
 - 46 ROOF CURB
 - 47 FIREWALL ROOF CURB
 - 48 FIREPLACE DIVIDING WALL
 - 49 PERGOLA (REFER TO 3/A117)
 - 50 LUX NEO LUMBER SCREEN MOUNTED TO GUARD, 1/3 SCREEN TO ALIGN WITH 1/3 PARAPET (REFER TO 4/A117)
 - 51 LOCKING GATE IN GLAZED GUARD RAIL
 - 52 GALV. STEEL GUARD c/w DIAGONAL BRACING (REFER TO STRUCTURAL)
 - 53 EXHAUST FAN
 - 54 DOGHOUSE OVER MECH. SHAFT, DUCT TO EXIT SIDE WALL (REFER TO MECHANICAL)
 - 55 LINE OF SOFFIT ABOVE
 - 56 MECHANICAL UNIT ON PREFAB ROOF CURB (REFER TO MECHANICAL)
 - 57 SOLAR PANELS, PARALLEL TO ROOF c/w ALL ACCESSORIES (QUANTITY AND LOCATION TBC)
 - 58 BOLLARD POST WITH POWER DOOR OPERATOR
 - 59 MECHANICAL FURRED OUT RISERS
 - CR CARD READER

IRONCLAD DEVELOPMENTS INC.

Project Management
General Contracting
Design-Build

101-57158
Symington Rd.
Springfield, MB.
R2J 4L6

Ph: 204-777-1972
info@icdev.ca



- GENERAL NOTES - FLOOR PLANS**
- CONTRACTOR MUST CONFIRM OVERALL SUITE DIMENSIONS PRIOR TO CONSTRUCTION OF INDIVIDUAL SUITES. OVERALL SUITE SIZES (WIDTH AND DEPTH) VARY DEPENDING ON BUILDING AND LOCATION. THESE INCLUDE BUT MAY NOT BE LIMITED TO SUITES TAGGED AS ALL. SUITES ON FLOOR PLANS ARE SHOWN FOR LOCATION AND OVERALL DIMENSIONS ONLY. *** REFER TO A801-A805 FOR SUITE INTERIOR LAYOUTS ***
 - FIRE STOP ALL PENETRATIONS IN REQUIRED FIRE SEPARATIONS TO MAINTAIN REQUIRED FRR.
 - ALL FIRE EXTINGUISHER CABINETS TO BE SEMI-RECESSED AND RATED 1 HR. FRR. LOCATE PER MECHANICAL.
 - EXTERIOR WALLS ARE DIMENSIONED TO OUTSIDE FACE OF SHEATHING UNO. OUTSIDE FACE OF SHEATHING TO ALIGN WITH GRID LINES UNO.
 - INTERIOR DIMENSIONS ARE TO FACE OF STUD UNO.
 - WINDOWS AND DOORS ARE DIMENSIONED TO ϕ UNO.
 - PROVIDE SOLID WOOD BLOCKING IN WALLS FOR ALL WALL MOUNTED MILLWORK AND EQUIPMENT (REFER TO A700-A702)
 - ALL LOAD BEARING WALLS/COLUMNS TO HAVE 1HR FRR (REFER TO STRUCTURAL FOR LOCATIONS). NOTE: FRR FOR LOAD BEARING WALLS IS NOT SHOWN ON PLANS, BUT ALL OTHER REQUIRED FRR IS SHOWN - GREATER TO GOVERN.
 - INSTALL INTUMESCENT FIREPROOFING (IF) AT ALL EXPOSED STEEL COLUMNS (NOT LOCATED IN WALL CAVITIES).

100	ISSUED FOR CONSTRUCTION	24 AUG 2023
REV#	REVISION DESCRIPTION	DATE

Consultant: **RJSG ARCHITECT**

ROBERT J. S. GARVEY ARCHITECT
ABC, MRAC, AIA, LEED AP
201-57158 SYMINGTON RD 20E
SPRINGFIELD, MB R2J 4L6
T: 204-227-9274
E: RGARVEY@A77.CA

All drawings and specifications are the property of Ironclad Developments Inc. and cannot be reproduced or used without written consent. The contractor shall verify all dimensions, datums and levels noted on the drawings with the conditions on site and shall be responsible for reporting any errors or omissions to the Architect for adjustments. This drawing shall not be scaled.

Project: **MISSION HEIGHTS**
2241 SPRINGFIELD ROAD
KELOWNA, BC

Drawing Title: **BUILDING 1 - MAIN FLOOR PLAN**

Project no. 2102	Designed by MB/RG
Drawn by JC/AL	Reviewed by RG
Date NOV 10, 2022	Revision Date
Reference no.	Scale AS NOTED
Sheet no.	Revision no.

A101

K:\Projects\2102-2241_Springfield_Rd_Kelowna\04_Design & Drawings\4.1_Architectural\4.1.1_LOAD\2102_2241_Mission_Heights_A101_Floor Plans B1_ICD.dwg