

**FOR LEASE**

# 140 CHAMPLAIN ST

**SUITE 207 | DIEPPE, NB**





# PROPERTY OVERVIEW

This property is ideally positioned in the heart of Dieppe, the suite offers **strong visibility** and convenient access to surrounding amenities.

Suite 207 features a bright, **open-concept design** with a practical layout and accessibility. **Large windows** allow for ample natural light, and **on-site parking** is available.

The space is **available immediately** and offers a **flexible interior** suitable for various office, commercial, or retail operations.

The suite has the electricity and janitorial services included.

**NB136620**  
MLS

**207**  
Suite

**\$18.00 PSF NET**  
Lease rate

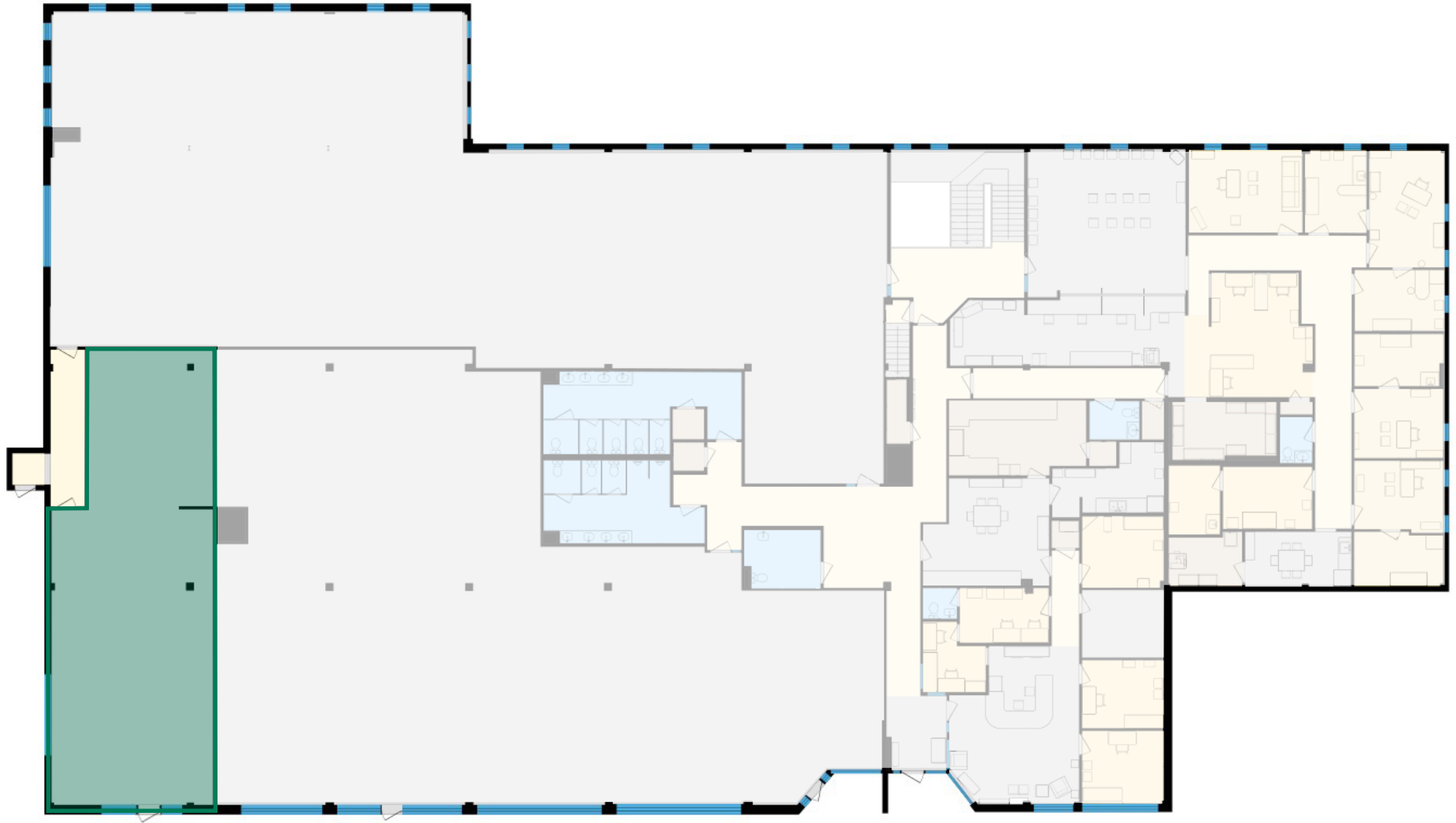
**1,942.21 SF**  
Size

**MAIN FLOOR**  
Level

**MIXED  
COMMERCIAL USE**  
Building Type



# FLOOR PLANS



● SUITE 207 | 1,942 SF

# MAP LOCATION

This property, strategically located on Champlain Street, is situated in the heart of Dieppe and enjoys close proximity to Greater Moncton and various amenities.

The area is well-connected, providing easy access to major transportation routes, including Main Street and Wheeler Boulevard, which ensures efficient connectivity to public transportation.





**ADAM MAGEE**  
Managing Director NB/NL  
+1 506 872 2507  
amagee@cwatlantic.com

**SUZIE TAYLOR**  
Commercial Real Estate Advisor  
+1 506 380 1777  
staylor@cwatlantic.com