

18 Enterprise Ave., Unit F

Ottawa South

Price
\$17.00/sf

OPC
\$ 6.78/sf



Salient Facts Property

Unit F 2,160 sf

Available February 1st, 2026

Zoning IG

Ceiling 14'

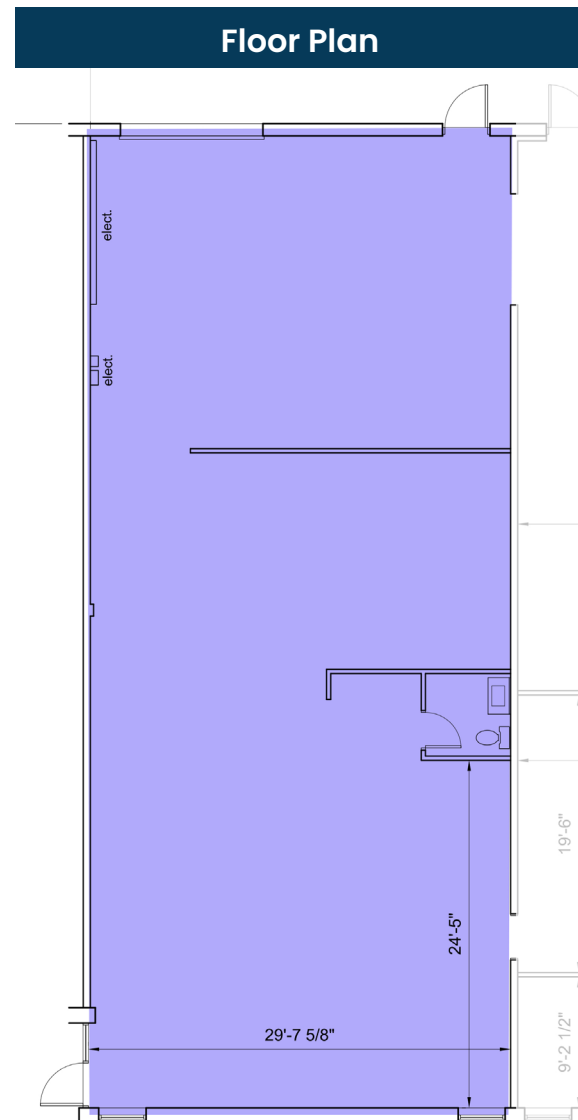
Power 60 amp, 120/208 V, 3 phase, roughly 40 KVA

Loading Overhead Door, 10' x 10'

Highlights

Located in the well-established Merivale Industrial Park, this versatile light industrial unit offers everything your operation needs for efficient, accessible business.

Featuring a high ceiling and loading door for seamless shipping and receiving, and on-site parking, this space is designed for functionality and flexibility. Prominent building signage is available to maximize your exposure.



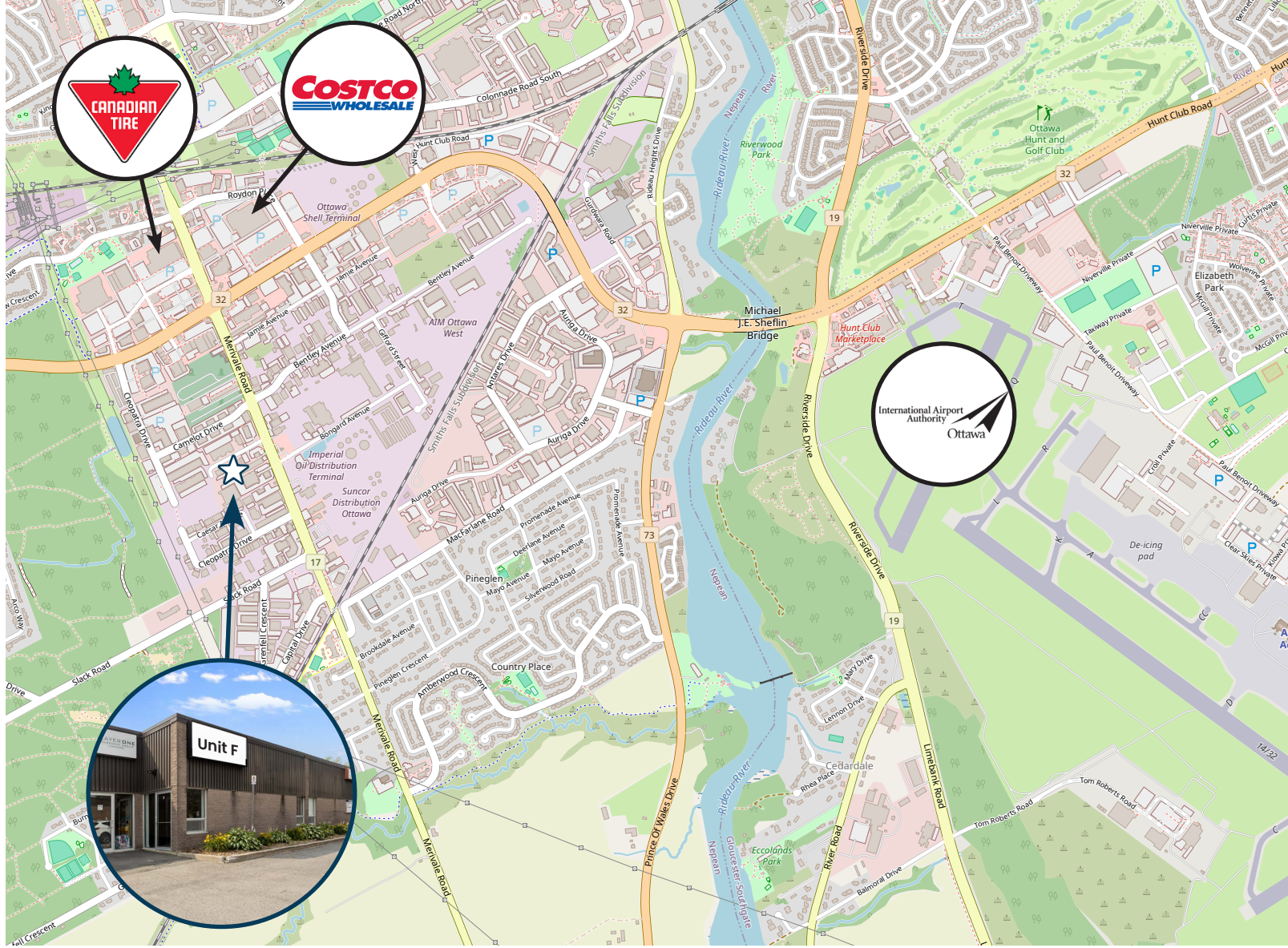
CONTACT

Darren Clare

Director, Leasing & Investment Sales | Sales Representative

613-759-8383

leasing@districtrealty.com

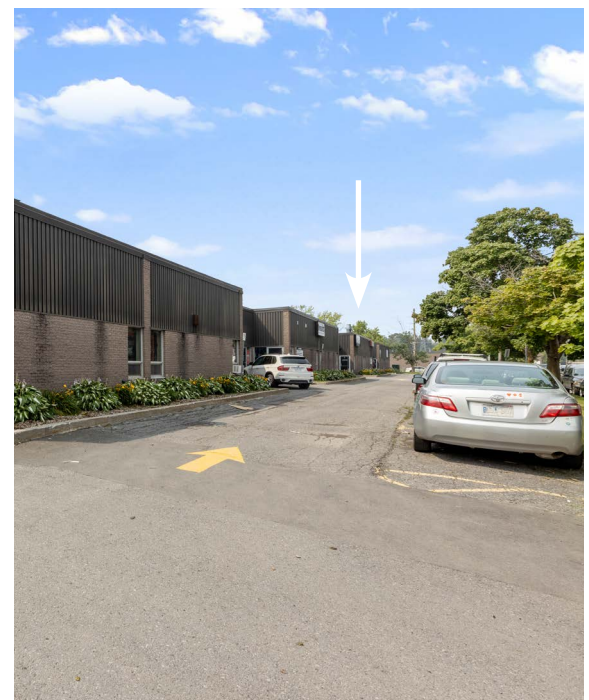


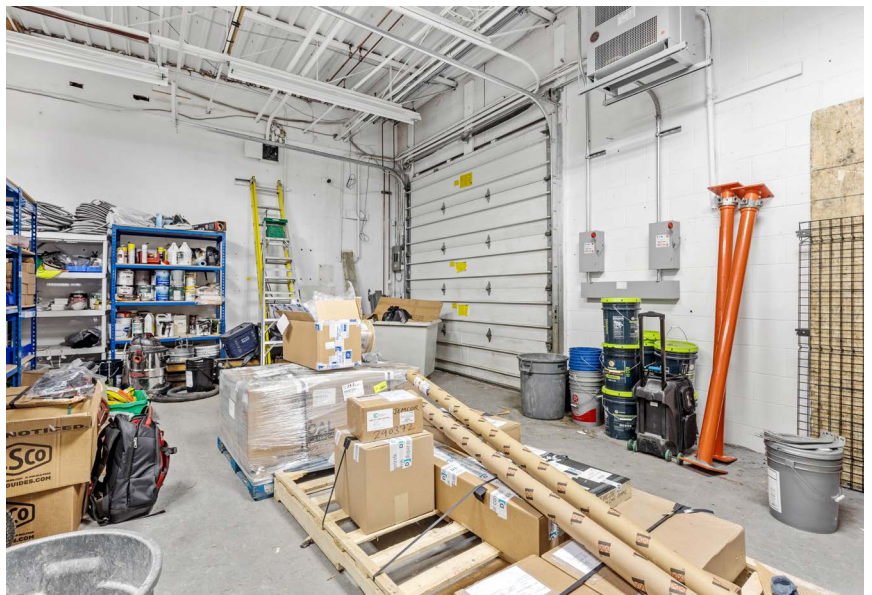
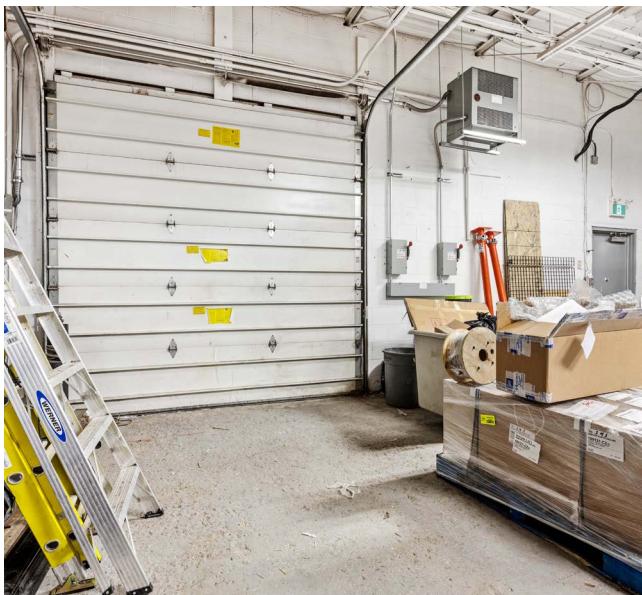
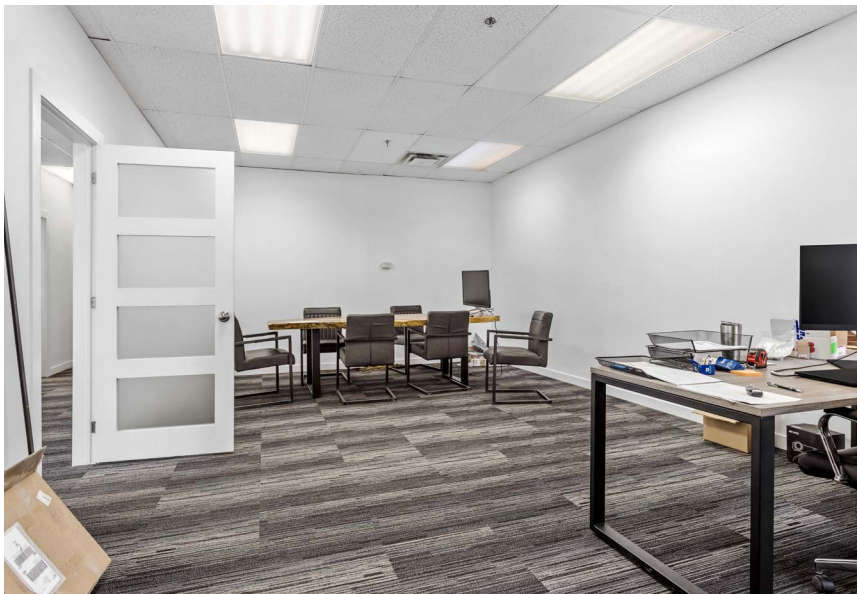
Location Overview

Strategically positioned just minutes from Ottawa International Airport, and a short drive to Highway 417, this location ensures quick connectivity across the city and beyond.

Surrounding amenities include Canadian Tire, RONA, Costco, and a wide range of grocery stores, restaurants and retail services – all within easy reach for clients and staff alike.

This is a prime opportunity to establish or grow your business in one of Ottawa's most accessible and amenity rich industrial hubs.





CONTACT

Darren Clare

Director, Leasing & Investment Sales | Sales Representative

613-759-8383

leasing@districtrealty.com